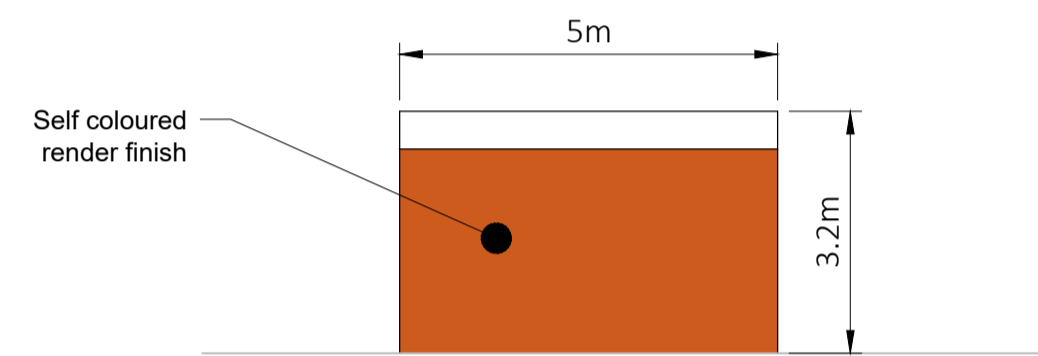
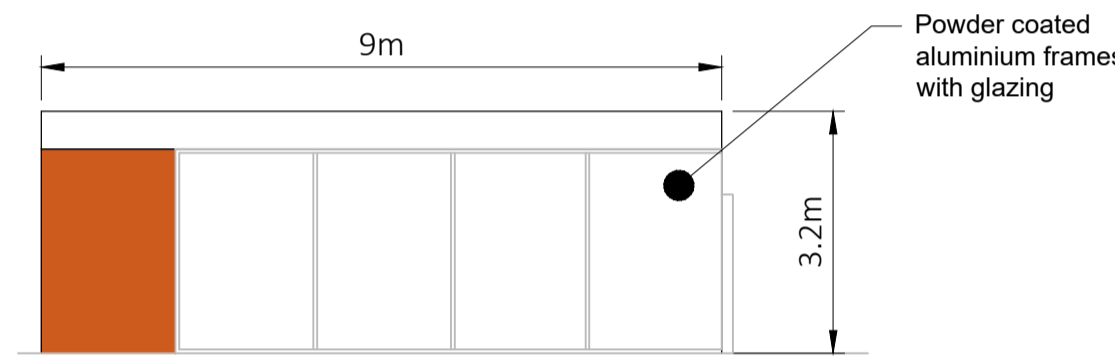


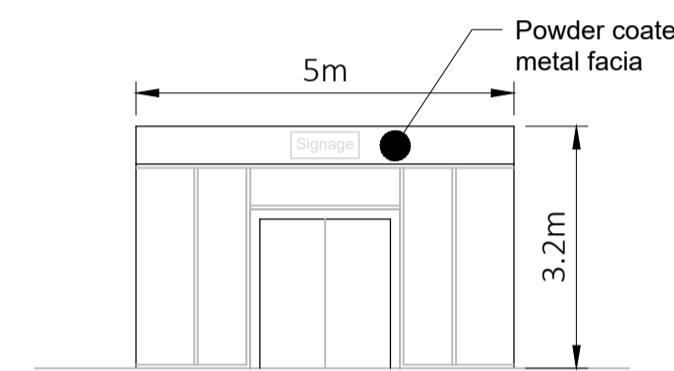
Kennedy Road Elevation - A
Scale 1:100



North Elevation - D
Scale 1:100



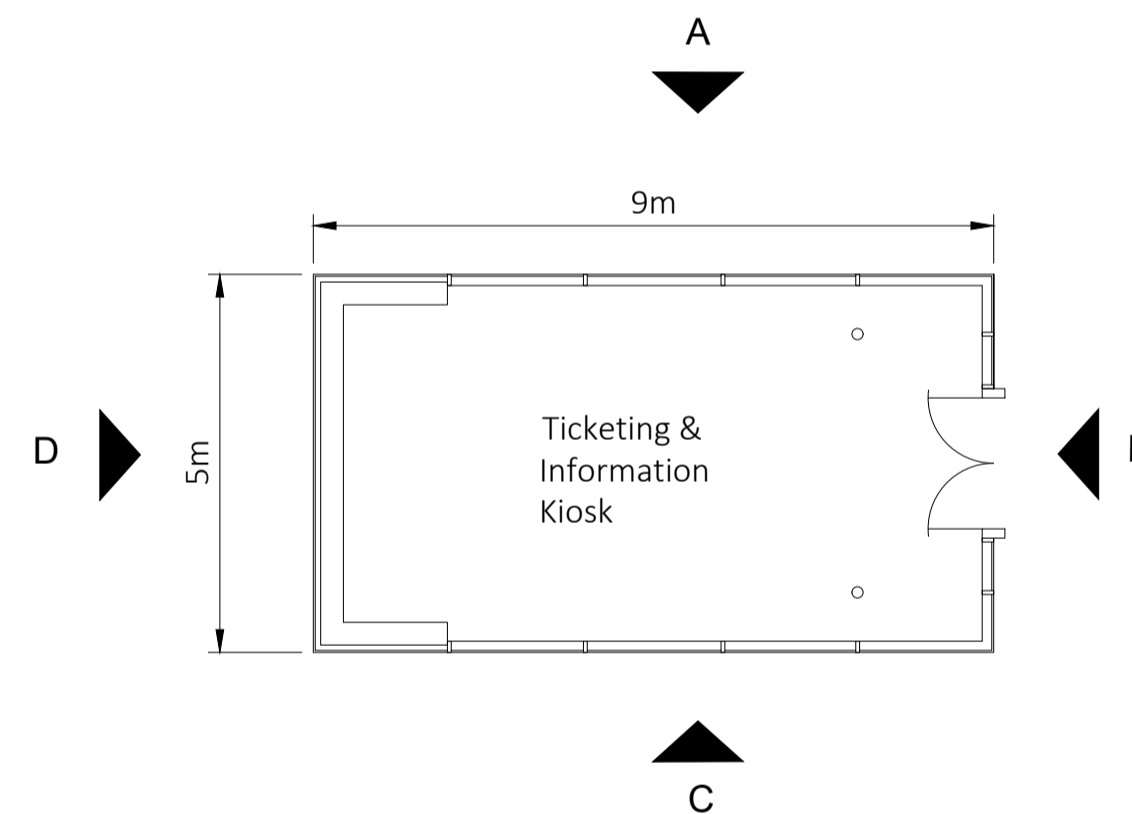
Kennedy Plaza Elevation - C
Scale 1:100



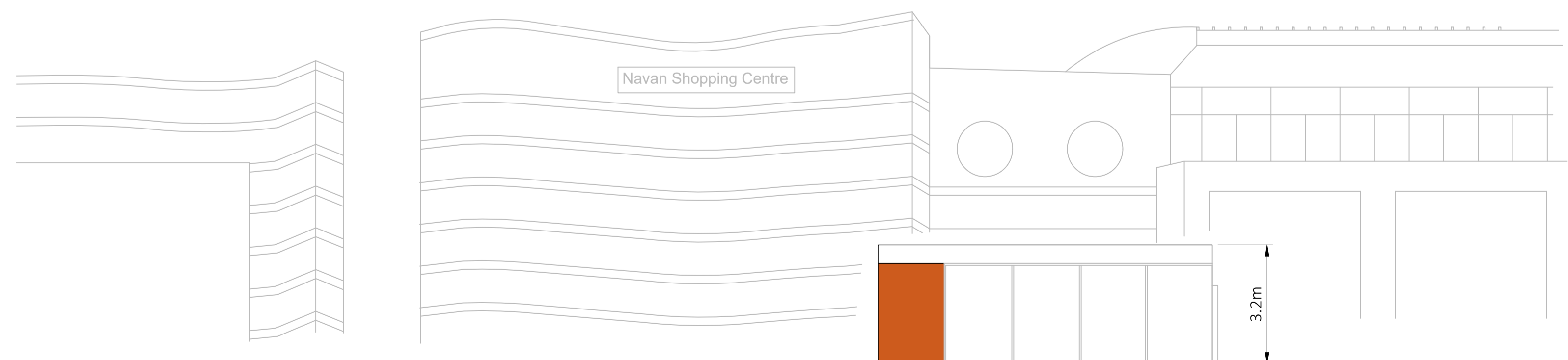
South Elevation - B
Scale 1:100

Notes:
1. All Dimensions are in metres
2. For Kiosk location see drawing 15_085_00_2305

Outline of Materials:
Walls: Self-coloured rendered fill. Powder coated metal cappings and cills.
Glazing: Powder coated aluminium frames with double glazing.



Kiosk Plan Layout
Scale 1:100



Kiosk Elevation related to Navan Town Shopping Centre
Scale 1:100

Revision	Description	Initials	Date
 Clifton Scannell Emerson Associates			
<small>Clifton Scannell Emerson Associates Limited Consulting Engineers, Seafort Lodge, Castledawson Avenue, Blackrock, Co. Dublin, Ireland. T. +353 1 288 5006 F. +353 1 283 3466 E. info@csea.ie W. www.csea.ie</small>			
 Brady Shipman Martin Built. Environment.			
<small>Urban Planner, Canal House, Canal Road, Dublin 6, Ireland. T. +353 1 288 5006 F. +353 1 283 3466 E. m@bradyshipmanmartin.ie W. www.bradyshipmanmartin.ie</small>			
Comhairle Chontae na Mí Meath County Council			
Client			
Navan Town Centre Public Realm & Movement Plan			
Project			
Kiosk Details Kennedy Plaza			
Dwg. Title			
Drawn By: KF Date: April 2017			
Checked by: MC Scale: 1:100 @ A1			
Dwg. Progress			
Part VIII Planning Drawings			
Dwg. No. 15_085_00_2312			