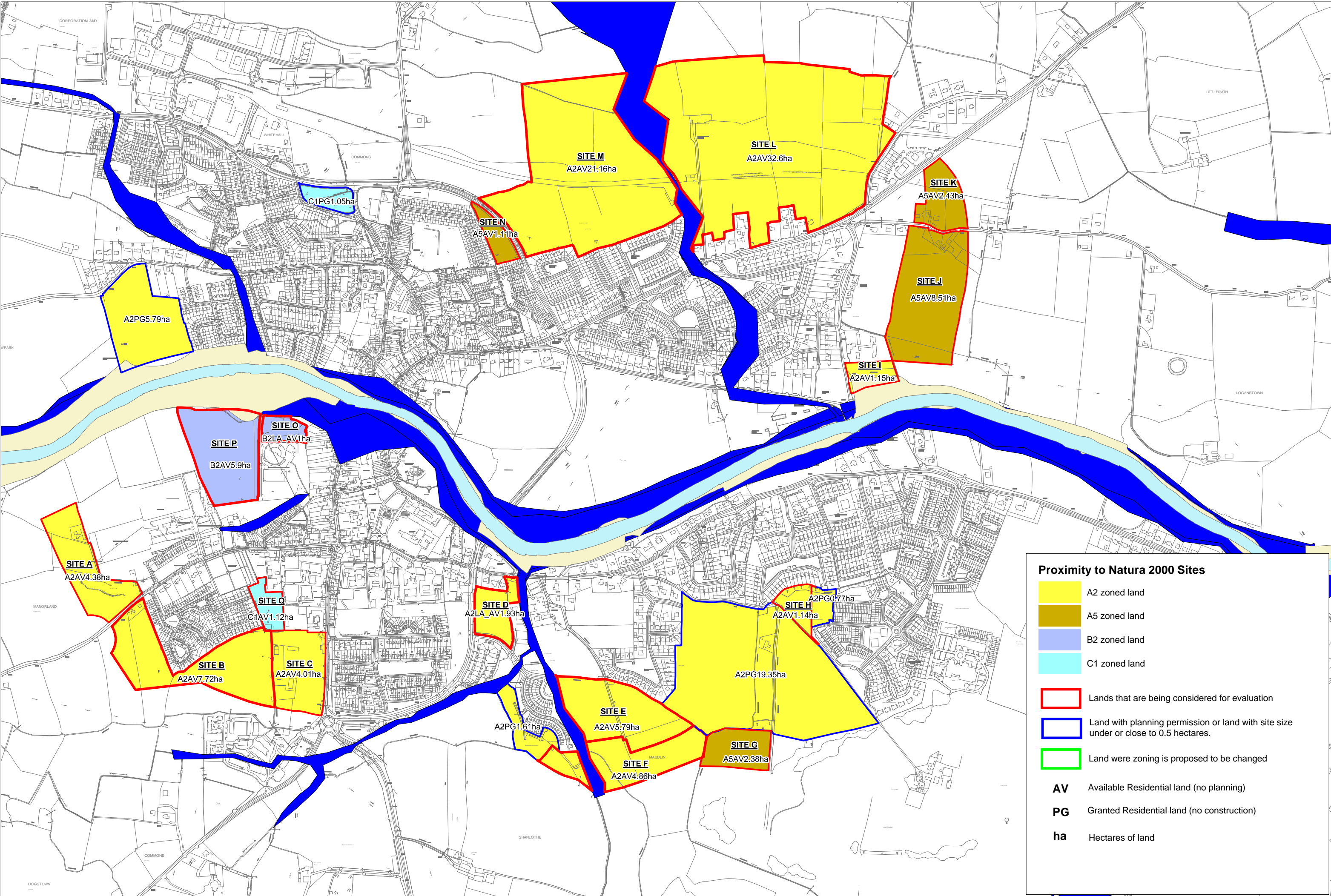


Appendix A

Evaluation of Residential Zoned Lands





Proximity to Natura 2000 Sites

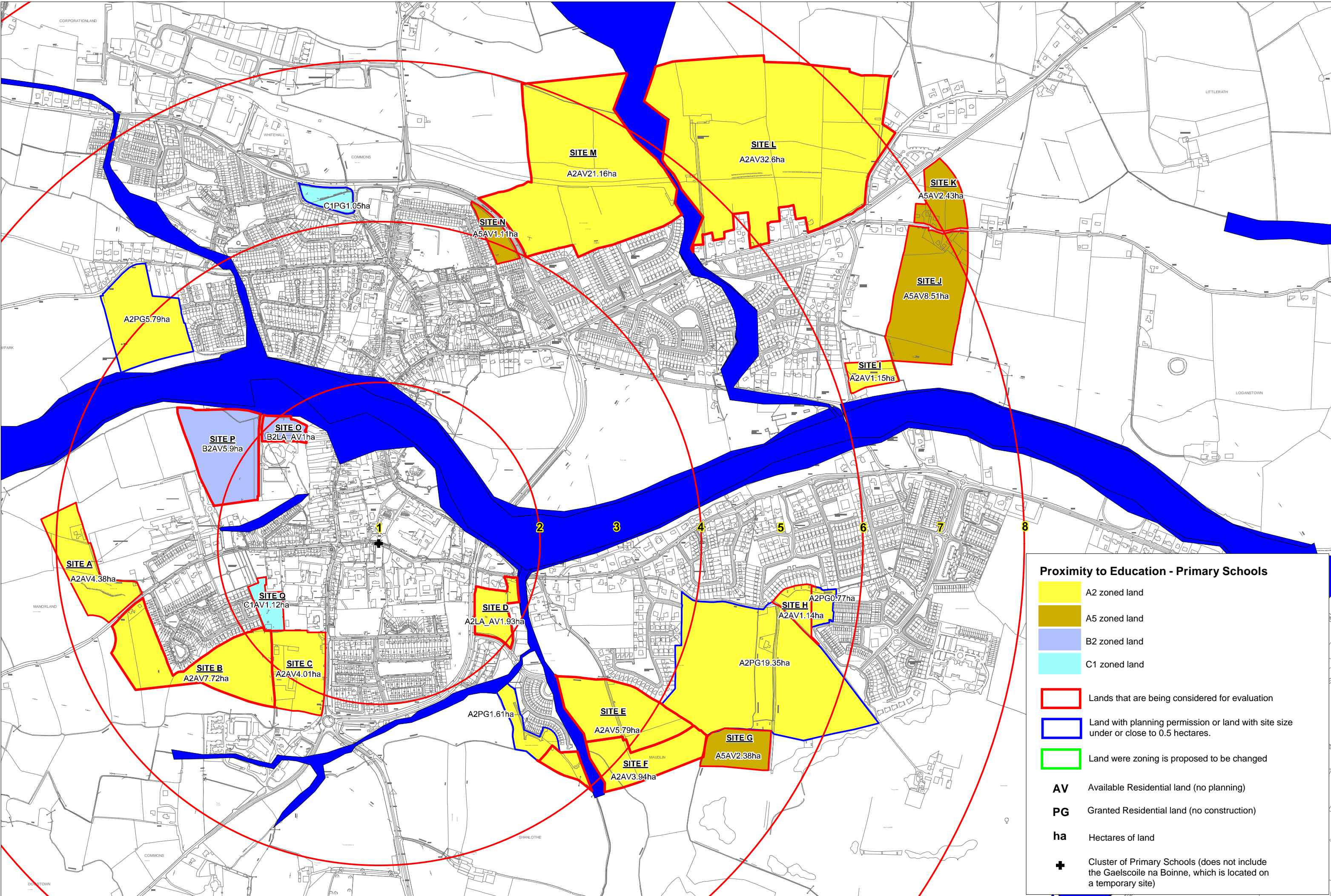
- A2 zoned land
- A5 zoned land
- B2 zoned land
- C1 zoned land
- Lands that are being considered for evaluation
- Land with planning permission or land with site size under or close to 0.5 hectares.
- Land where zoning is proposed to be changed
- AV** Available Residential land (no planning)
- PG** Granted Residential land (no construction)
- ha** Hectares of land

TRIM

Flood Zones A-B

Special Area of Conservation (SAC)

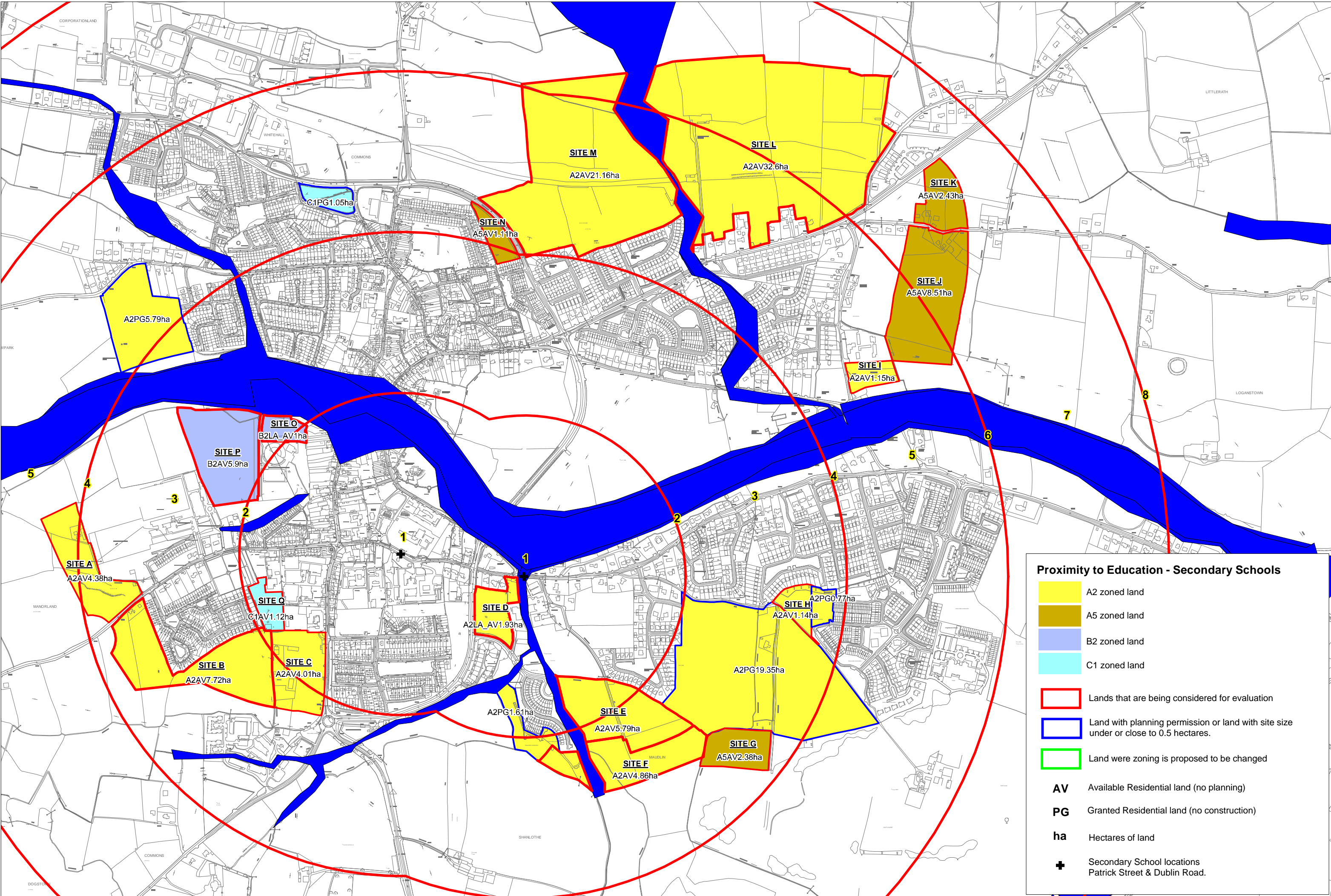
Special Protection Area (SPA)



TRIM

Flood Zones A-B

500m radius circles from Primary Schools on Patrick Street



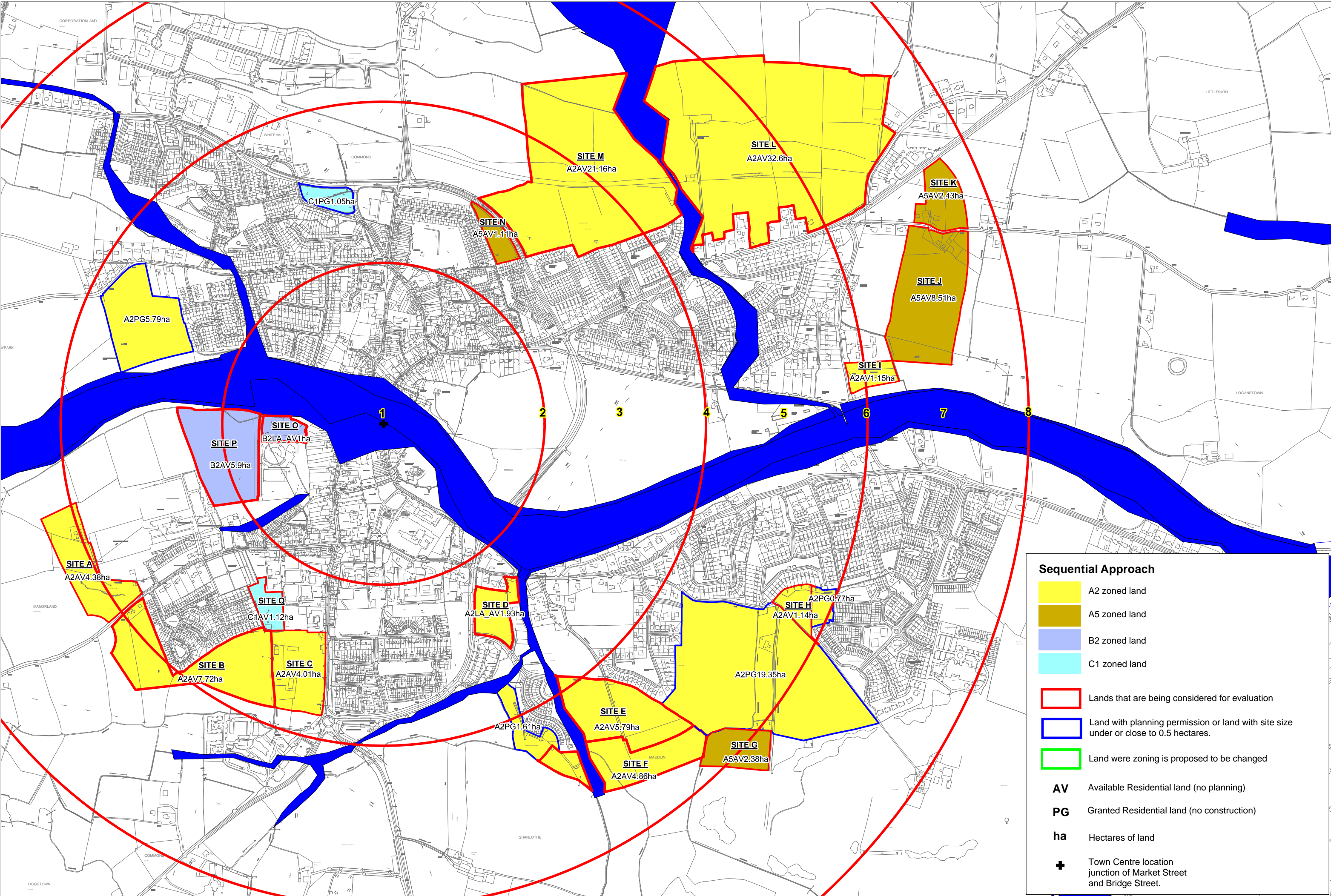
Proximity to Education - Secondary Schools

- A2 zoned land
- A5 zoned land
- B2 zoned land
- C1 zoned land
- Lands that are being considered for evaluation
- Land with planning permission or land with site size under or close to 0.5 hectares.
- Land where zoning is proposed to be changed
- AV Available Residential land (no planning)
- PG Granted Residential land (no construction)
- ha Hectares of land
- Secondary School locations Patrick Street & Dublin Road.

TRIM

Flood Zones A-B

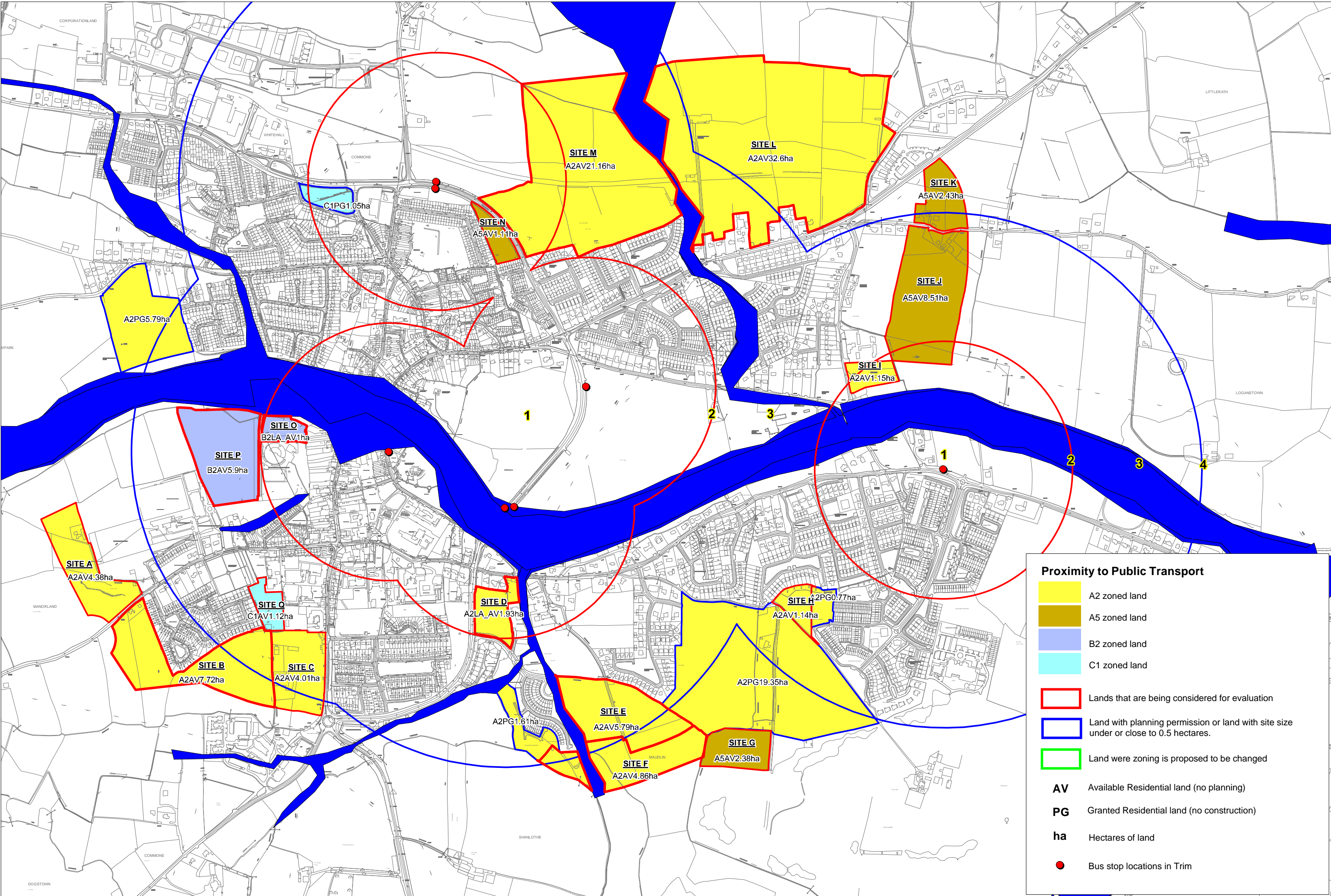
500m radius circles from Secondary Schools on Patrick Street & Dublin Road



TRIM

Flood Zones A-B

500m radius circles from junction of Market street and Bridge street



Proximity to Public Transport

A2 zoned land

A5 zoned land

B2 zoned land

C1 zoned land

Lands that are being considered for evaluation

Land with planning permission or land with site size under or close to 0.5 hectares.

Land where zoning is proposed to be changed

AV

Available Residential land (no planning)

PG


Granted Residential land (no construction)

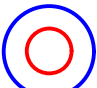
ha

Hectares of land

Bus stop locations in Trim

TRIM

 Flood Zones A-B

 400m & 800m radius circles from Bus stop locations