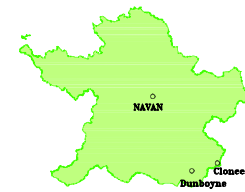


DRAFT
Dunboyne, Clonee, Pace
LOCAL AREA PLAN 2009-2015
MAP 3.

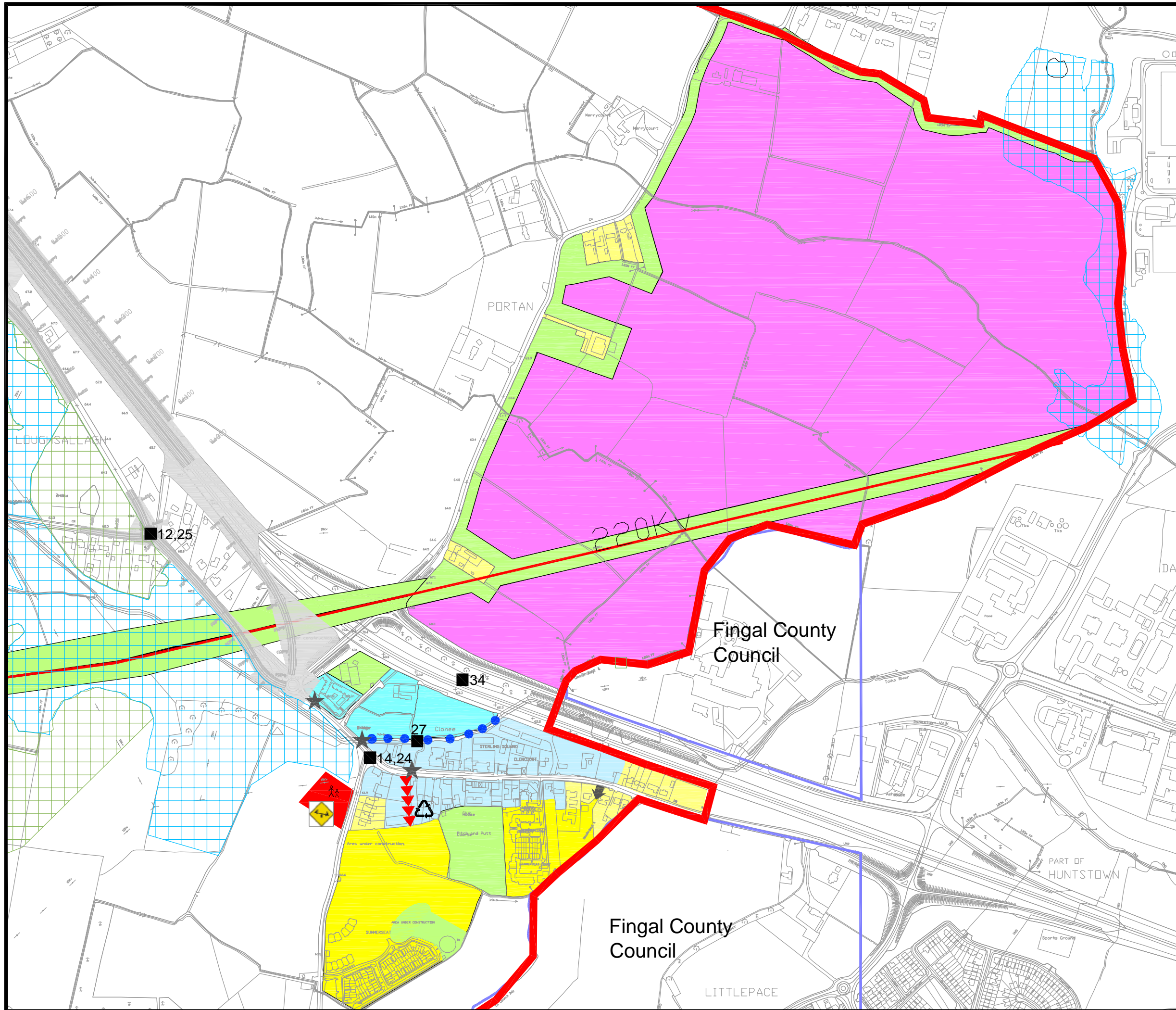


LAND USE ZONING OBJECTIVES

- A1** To protect and enhance the amenity of developed residential communities.
- A2** To provide for new residential communities and community facilities and to protect existing residential areas.
- B1** To protect and enhance the special physical and social character of the existing town and village centres and to provide for new and improved town centre facilities and uses.
- C1** To provide for and facilitate mixed residential and business uses in accordance with approved
- E2** To provide for light industrial and industrial office type employment in a high quality campus environment subject to the requirements of approved action plans and the provision of necessary infrastructure.
- F1** To provide for and improve open spaces for active and passive recreational amenities.
- G1** To provide for necessary community, recreational and educational facilities.
- GB** To maintain a green belt between the development boundary and the M3.

SPECIFIC OBJECTIVES

- Access points
- Protected Structures
- Educational Facility
- Playground Facility
- Area of Geological interest
- Pedestrian walkways / cycleways
- Major distributor / new roads
- Movement Policy (See Section 5)
- Roads Under Construction
- Bring Bank
- Floodplain



DRAFT 13th March 09

Meath County Council
 Planning Department
 Abbey Mall,
 Abbey Rd.,
 Navan
 Tel: (046) 9097500 Fax: (046) 9097001

Scale: NTS
 AutoCAD Reference No. xxxxxxxxxxxxxxxxx