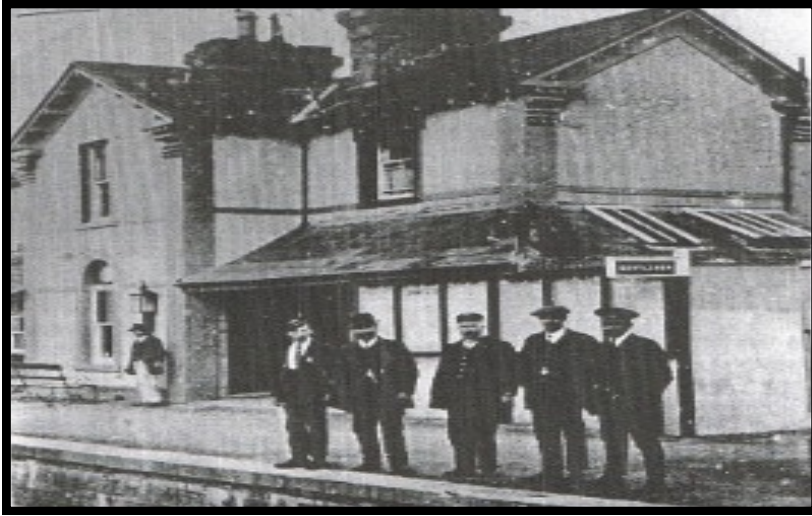


The Station House



- Equipment needed:**
- Clipboard
 - Blank sheet of paper
 - Pencil
 - Worksheet

Activity 1

Identify the materials used in the front of the building. Tick the ones that you see.

Granite	<input type="checkbox"/>
Wood	<input type="checkbox"/>
Glass	<input type="checkbox"/>
	<input type="checkbox"/>

General Information

In the 1900's the present hotel was a station serving as a livery stop for both Meath and the county of Westmeath. At one end is a gateway making it a turn-point for trains returning to Dublin and at the other end is the old signal cabin which still remains.

The station was burned in 1922 during the Civil War. The last passenger train ran in December 1947. the railway remained open for freight traffic until 1963. Cement and livestock were the main items handled at the station during this time.

Activity 2


Name some plants and flowers you can see on the hotel grounds.

Activity 3

Look at the picture. What changes can you see to the outside of the building today?

Activity 4

Sketch the Station House here.



Curriculum Links

Science - Strand; Science and the environment, Plant life, Materials
Geography - Strand; Human environments **History** - Strand; Local Studies
English - Strand; Competence and confidence using language **Visual Arts** - Strand; Drawing