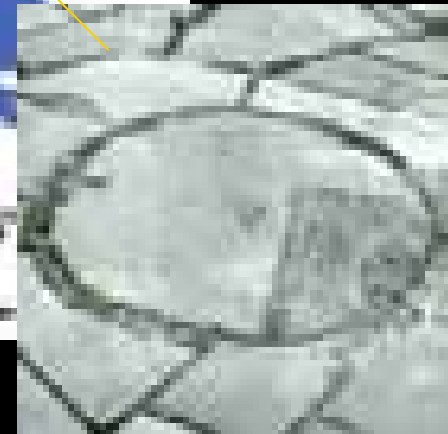
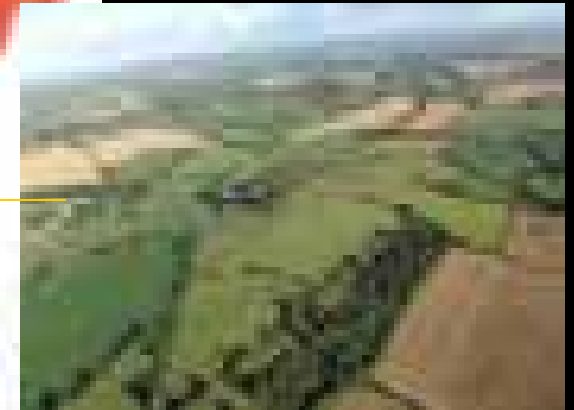
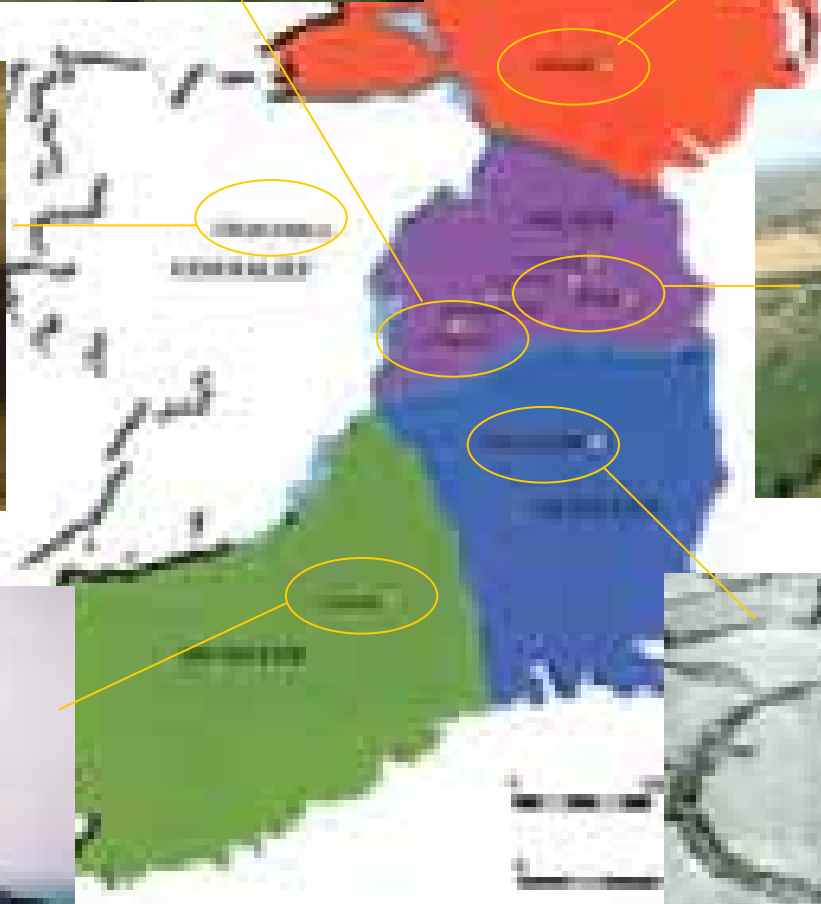


Royal Sites



The Navan Fort Landscape



The Navan Fort Landscape

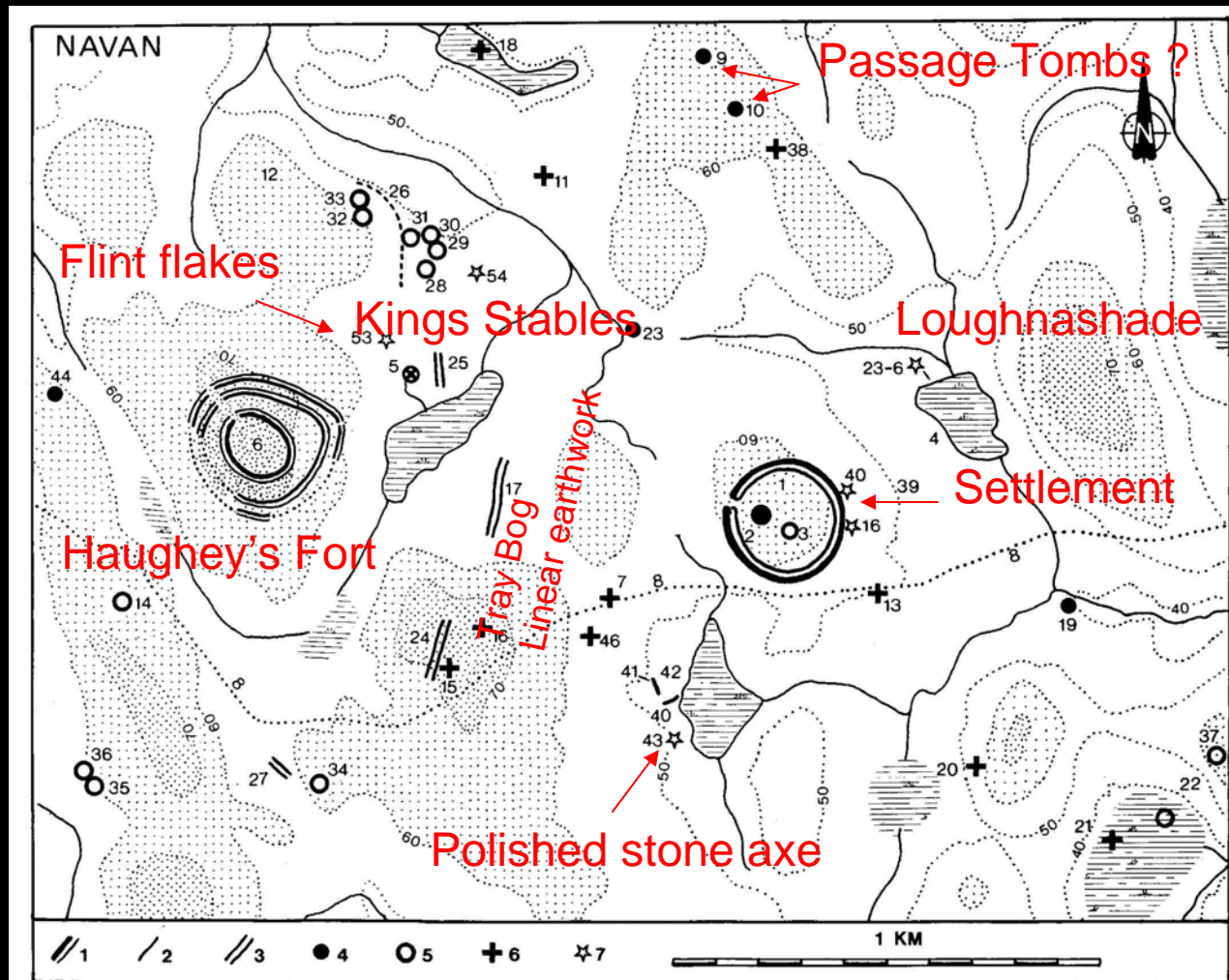
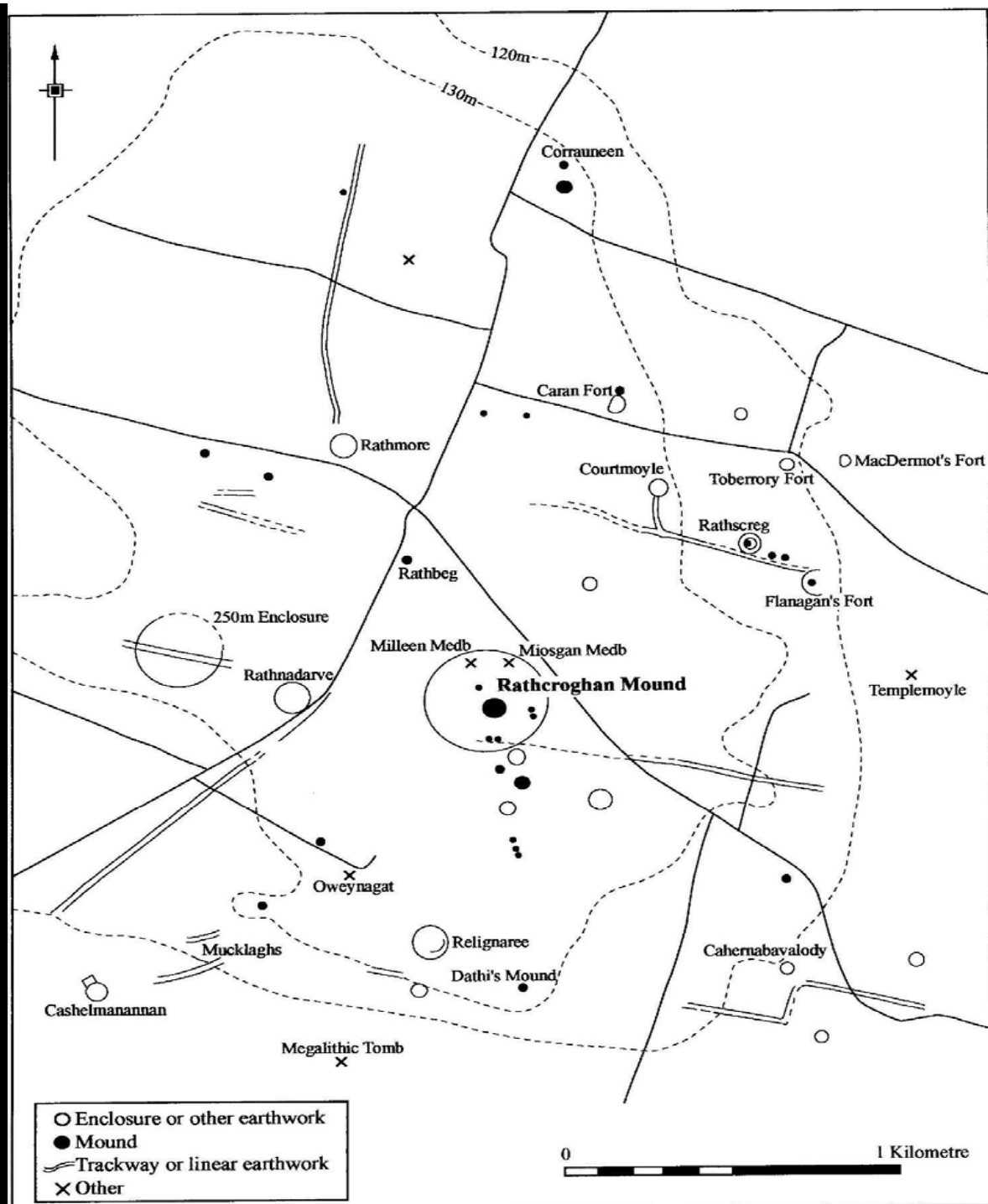


Fig. 1: Key: 1 - bank-and-ditch; 2 - linear-ditch; 3 - double linear-ditch; 4 - mound; 5 - ring-ditch; 6 - other type of site; 7 - find. Where a number is shown without a symbol the location is less precise. Land over 60 metres O.D. is stippled. The ancient extent of lakes and bogs is indicated by horizontal shading.

Rathcroghan Landscape













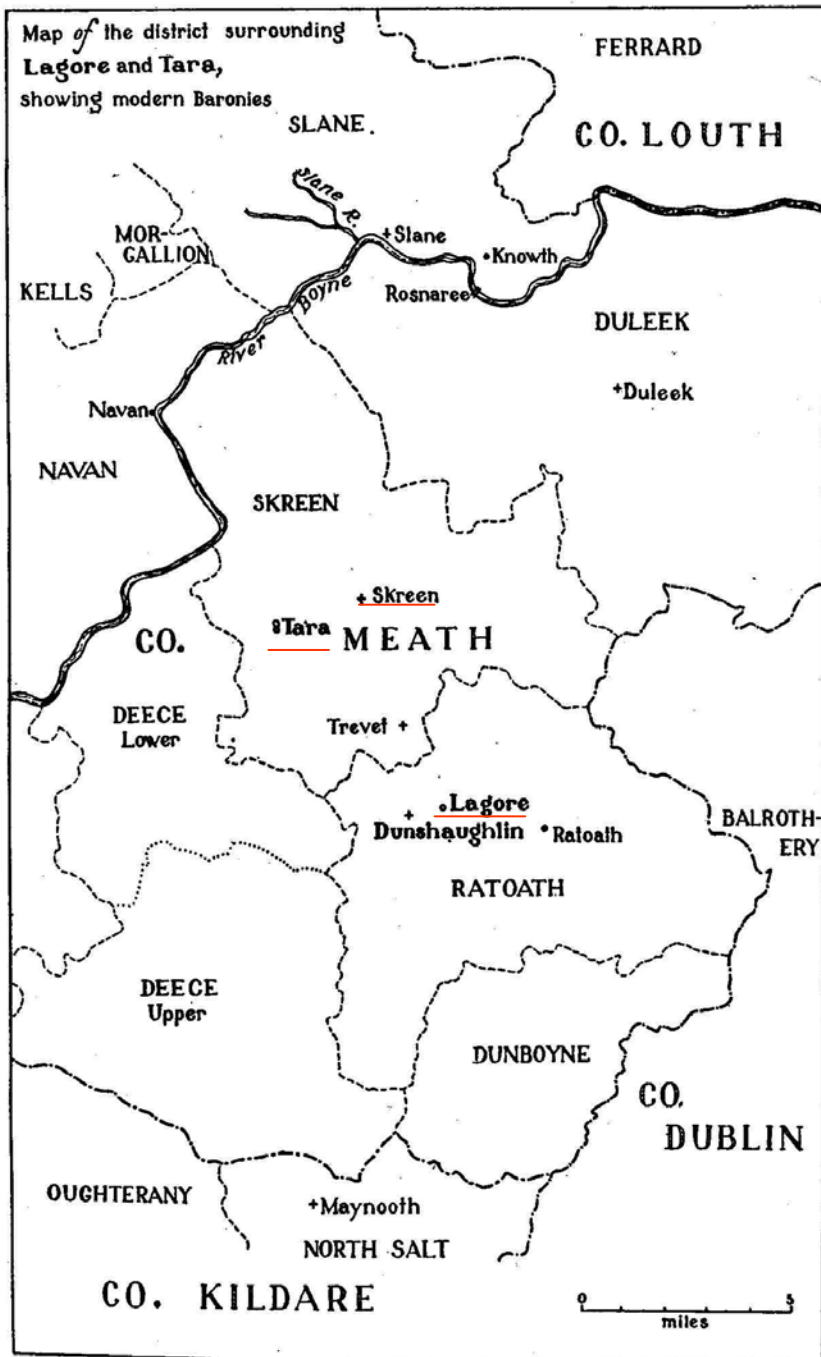


Lagore Crannóg
O'Neill Hencken PRIA 1950



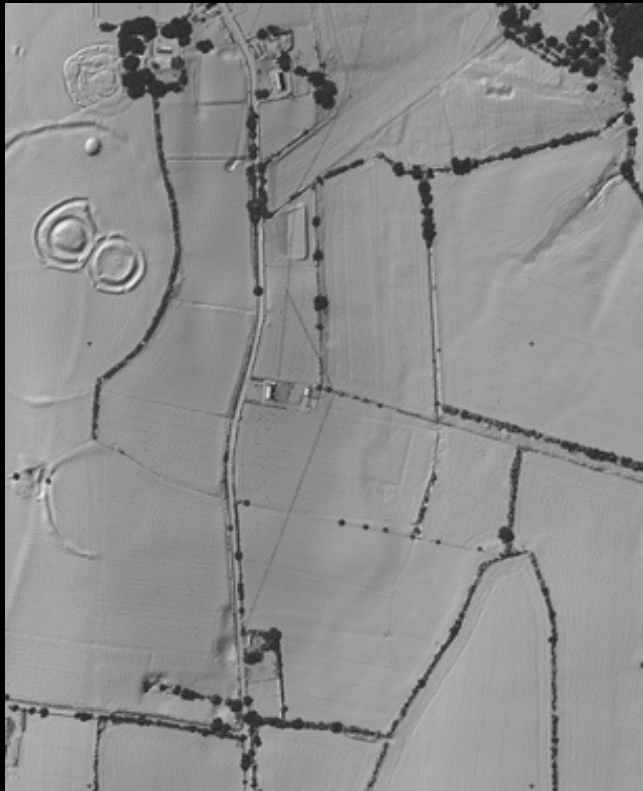
Dunshaughlin, Co. Meath : Secundinus

Map of the district surrounding
Lagore and Tara,
 showing modern Baronies

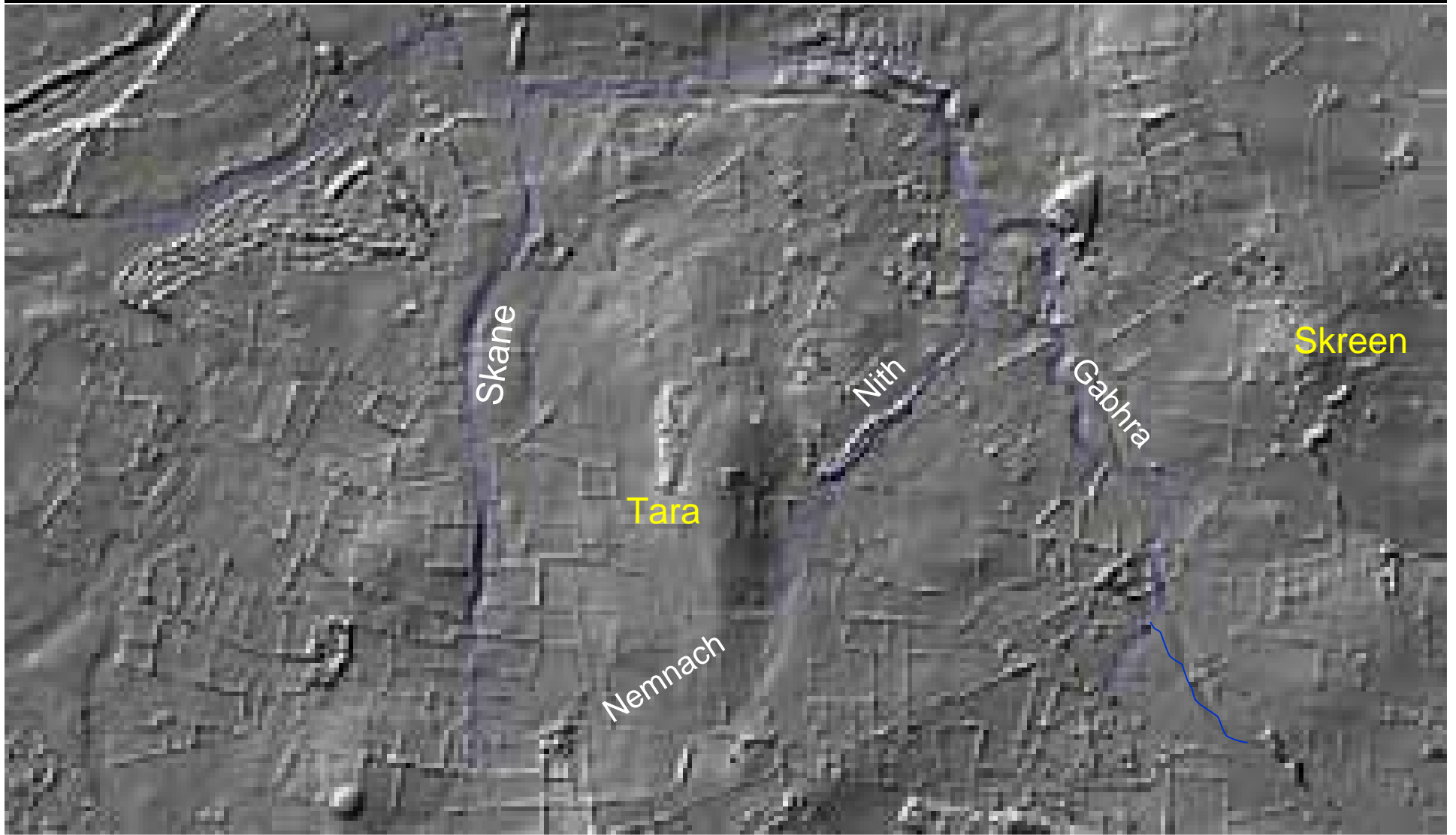


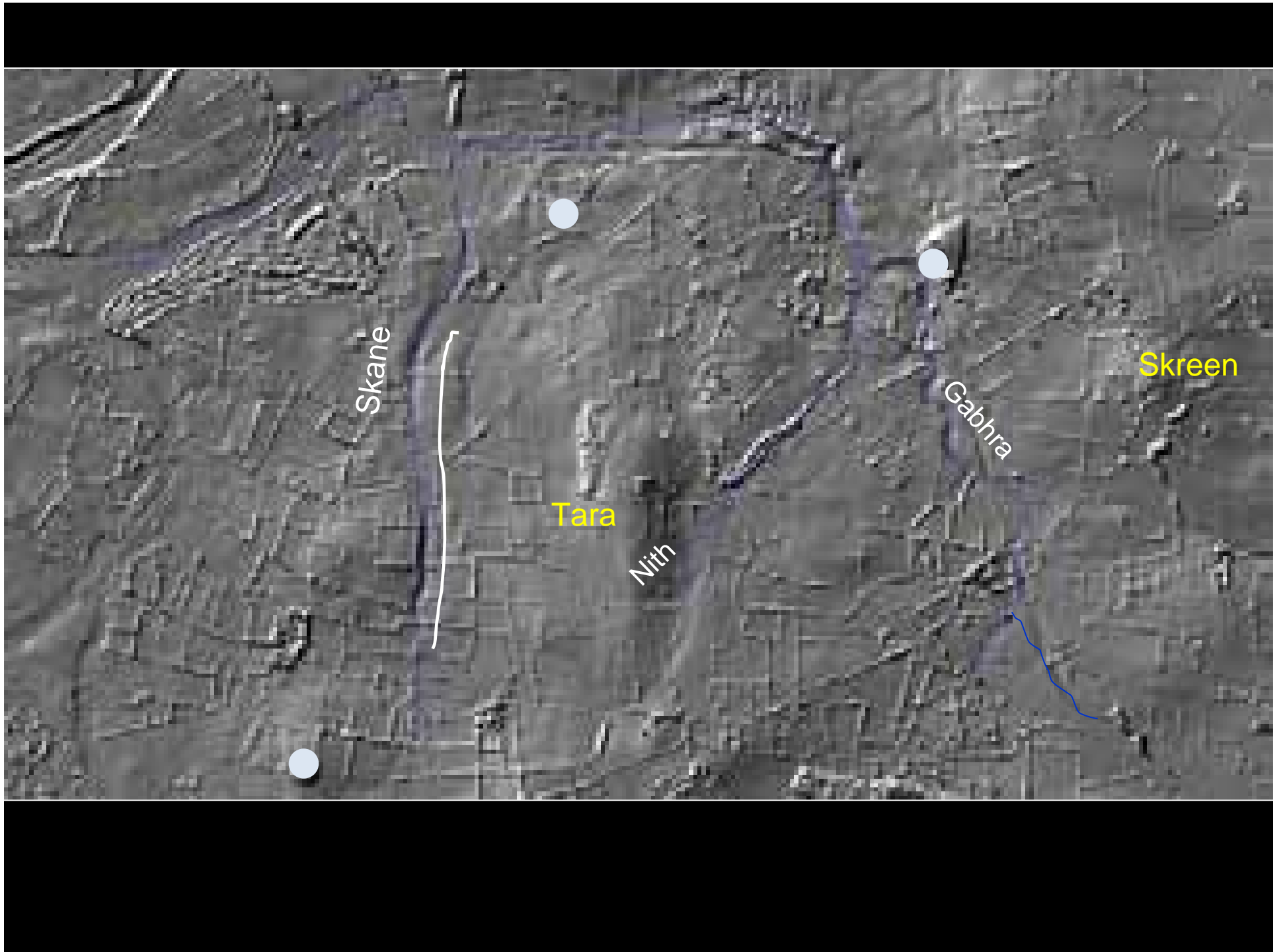


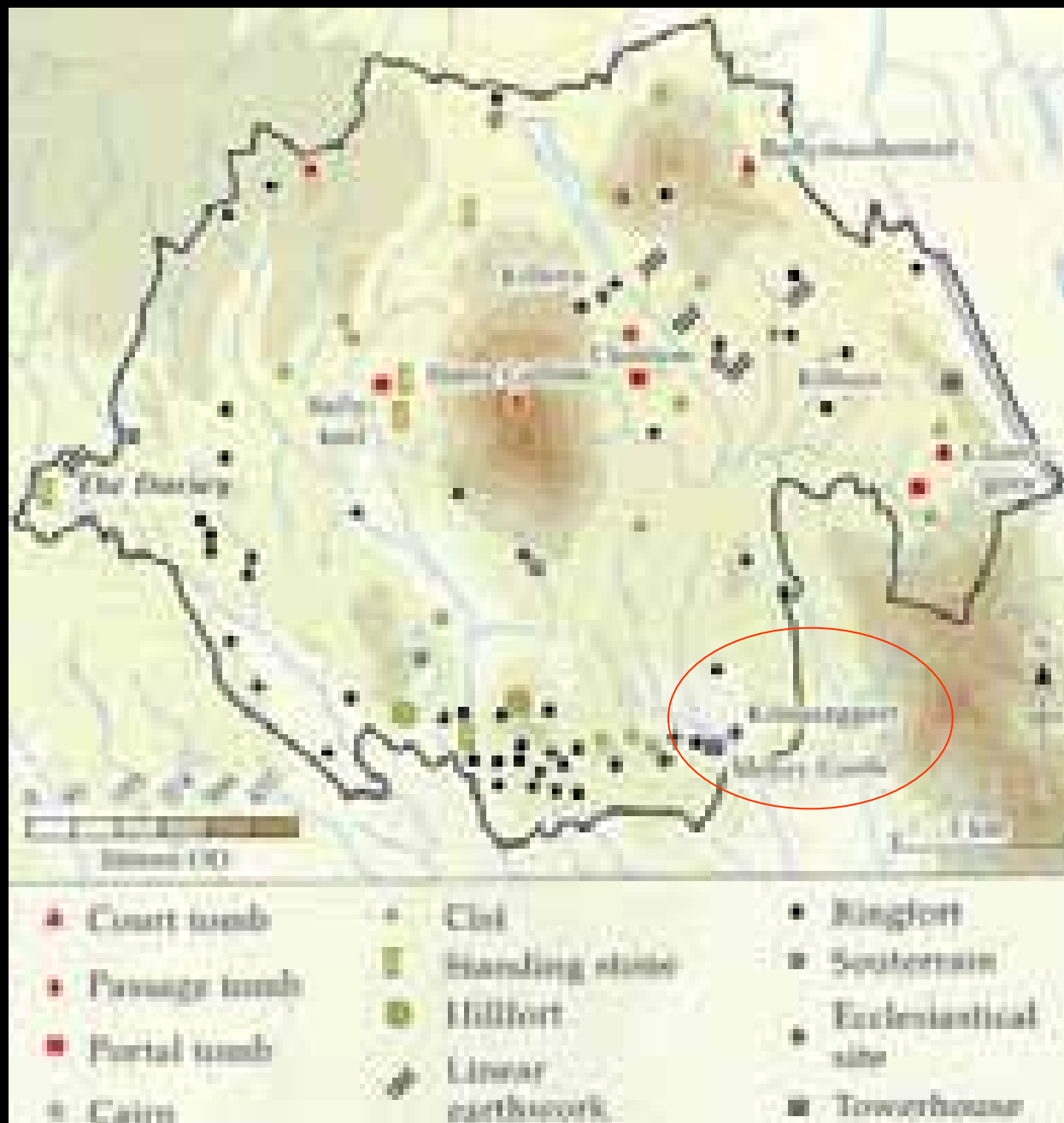












Kilnasaggart,
Co. Armagh

North and East faces bear
No fewer than 11 crosses
(10 ringed)

And a minimum of 55 deep,
V-sectioned score-marks





Mullaghmast Stone, Co. Kildare

Mullaghmast (*Maistiú*) is home to Aine, one of the fairy-queens of the mythological Tuatha Dé Danann, and original home of the Leinster dynasty the Uí Dúnlainge.

It was seat of the Uí Muiredaig, early kings of Leinster, and burial place of Ailill, son of Dúnlainge. Lóegaire, king of Tara, was buried upright & fully armed in the ramparts of Tara, facing this old enemy.

It is also the birth-place of Lawrence O'Toole

