

DESIGN NOT YET AGREED WITH LOUTH COUNTY COUNCIL
FINAL LAYOUT SUBJECT TO AGREEMENT WITH LOUTH COUNTY COUNCIL

SECTION 3
CH 2400 TO 3600

SECTION 2
CH 1050 TO 2400

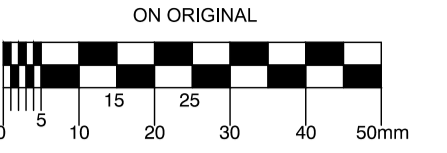
SECTION 1
CH 0 TO 1050

SECTION 4
CH 3600 TO 4800

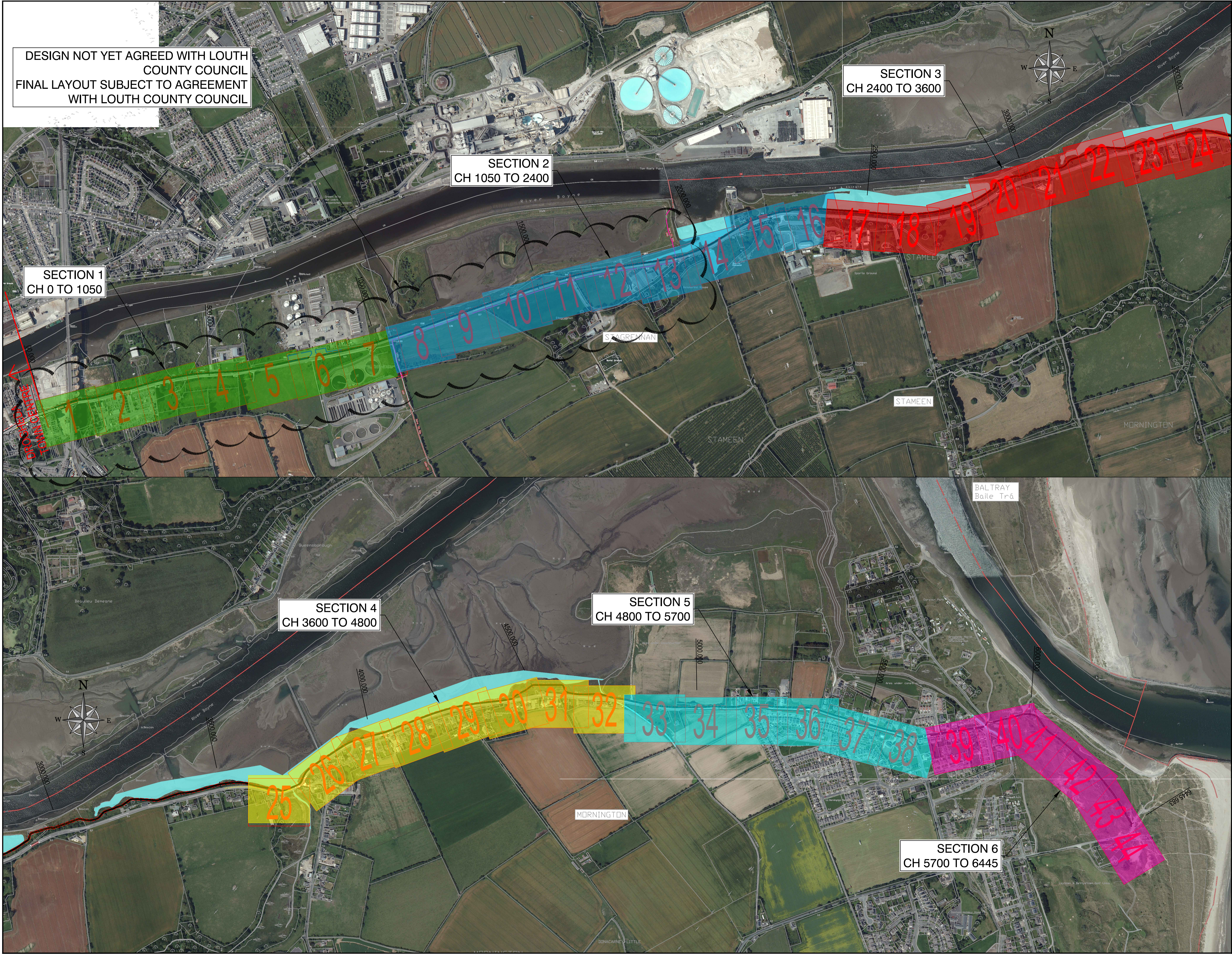
SECTION 5
CH 4800 TO 5700

SECTION 6
CH 5700 TO 6445

© COPYRIGHT OF THIS DRAWING IS RESERVED BY DBFL CONSULTING ENGINEERS. NO PART SHALL BE REPRODUCED OR TRANSMITTED WITHOUT THEIR WRITTEN PERMISSION.



NOTES:



PT	30-06-19	NON-STATUTORY CONSULTATION	DUG	MPK
REV.	DATE	DESCRIPTION	BY	CHKD.
NON-STATUTORY PUBLIC CONSULTATION				
DESIGNED	MPK	PREPARED	DJG	
DATE	AUG 2019	CHECKED	FLJK	

DBFL
Dublin Office: Ormond House, Upper Ormond Quay, Dublin 7, Ireland. PHONE +353 1 400 4000 FAX +353 1 400 4050
Waterford Office: Unit 2, The Chandlery, 1-2 O'Connell Street, Waterford, Ireland. PHONE +353 51 308 500 FAX +353 51 844 813
DBFL Consulting Engineers email: info@dbfl.ie site: www.dbfl.ie

PROJECT
BOYNE GREENWAY
DROGHEDA TO MORNINGTON

DRG. TITLE
PROPOSED ALIGNMENT KEY PLAN

CLIENT
comhairle chontae na mí
meath county council

SCALE	1:5000 @A1	FILE REF.	170029-2200
DRG. NO.	170029-2200		P1