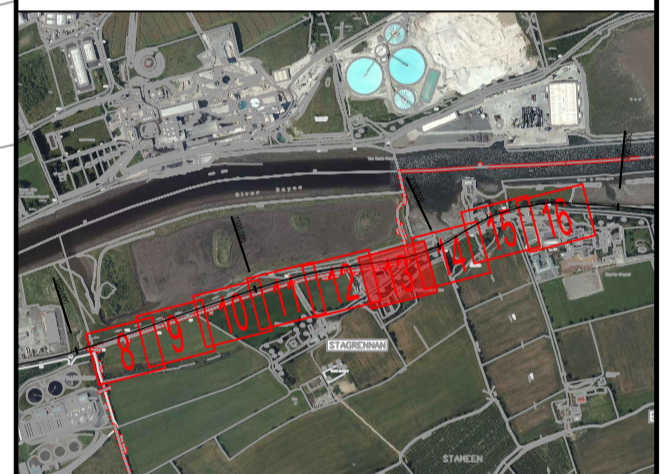


- NOTES:
- GENERAL NOTES:
 1. ALL CO-ORDINATES ARE TO IRISH NATIONAL GRID (BASED ON OS MAPPING)
 2. ALL LEVELS ARE TO ORDNANCE DATUM MALIN HEAD (BASED ON LEAS SURVEY INFORMATION)
 3. ALL DIMENSIONS IN METRES UNLESS SPECIFIED OTHERWISE

LEGEND:

- Type A Construction Section (Alongside Road)
- Type B Construction Section (Away from Road)
- Type C Construction Section (Timber Matt Construction)
- Type D Construction Section (Boardwalk Construction)
- Type E Construction Section (Local Bridge)
- Proposed Footpath
- Existing River / Water Course
- Existing Road
- Existing Footpath
- Raised Table
- Possible Land Acquisition
- Existing Road Level
- Proposed Greenway Level



KEYPLAN

PT	30-08-19	NON-STATUTORY CONSULTATION	DJG	MPK
REV.	DATE	DESCRIPTION	BY	CHKD.
NON-STATUTORY PUBLIC CONSULTATION				
DESIGNED	MPK	PREPARED	DJG	
DATE	AUG 2019	CHECKED	RLJK	

DBFL Dublin Office: Ormrod House, Upper Ormrod Quay, Dublin 7, Ireland. PHONE: +353 1 400 4000 FAX: +353 1 400 4050

Waterford Office: Unit 2, The Chandlery, 1-2 O'Connell Street, Waterford, Ireland. PHONE: +353 51 308 5500 FAX: +353 51 844 913

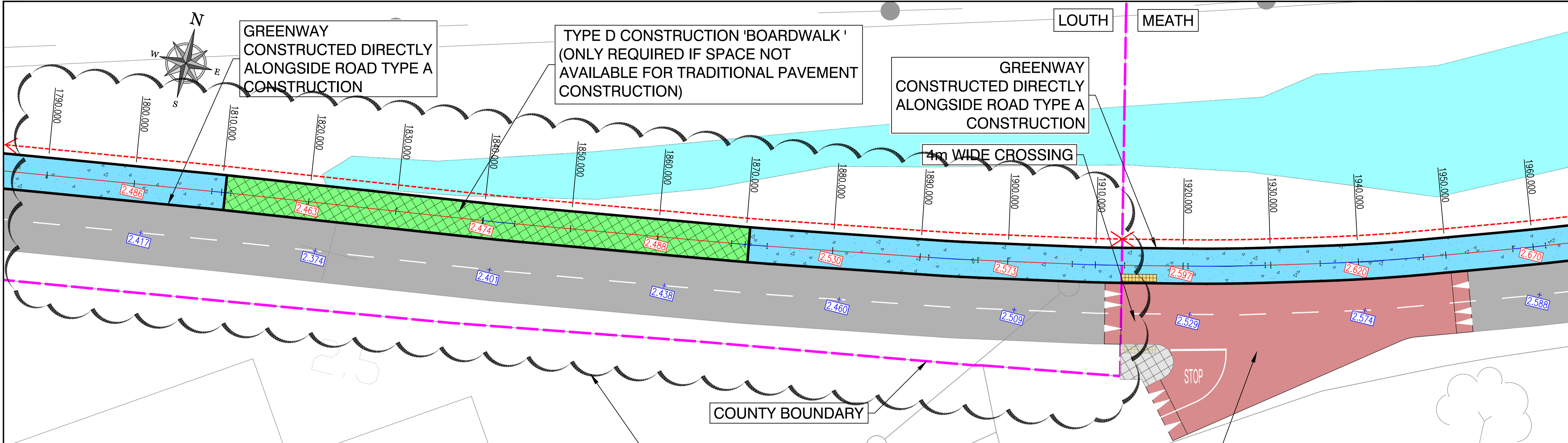
DBFL Consulting Engineers email: info@dbfl.ie site: www.dbfl.ie

PROJECT
BOYNE GREENWAY
DROGHEDA TO MORNINGTON

DRG. TITLE
PROPOSED ALIGNMENT SHEET 13

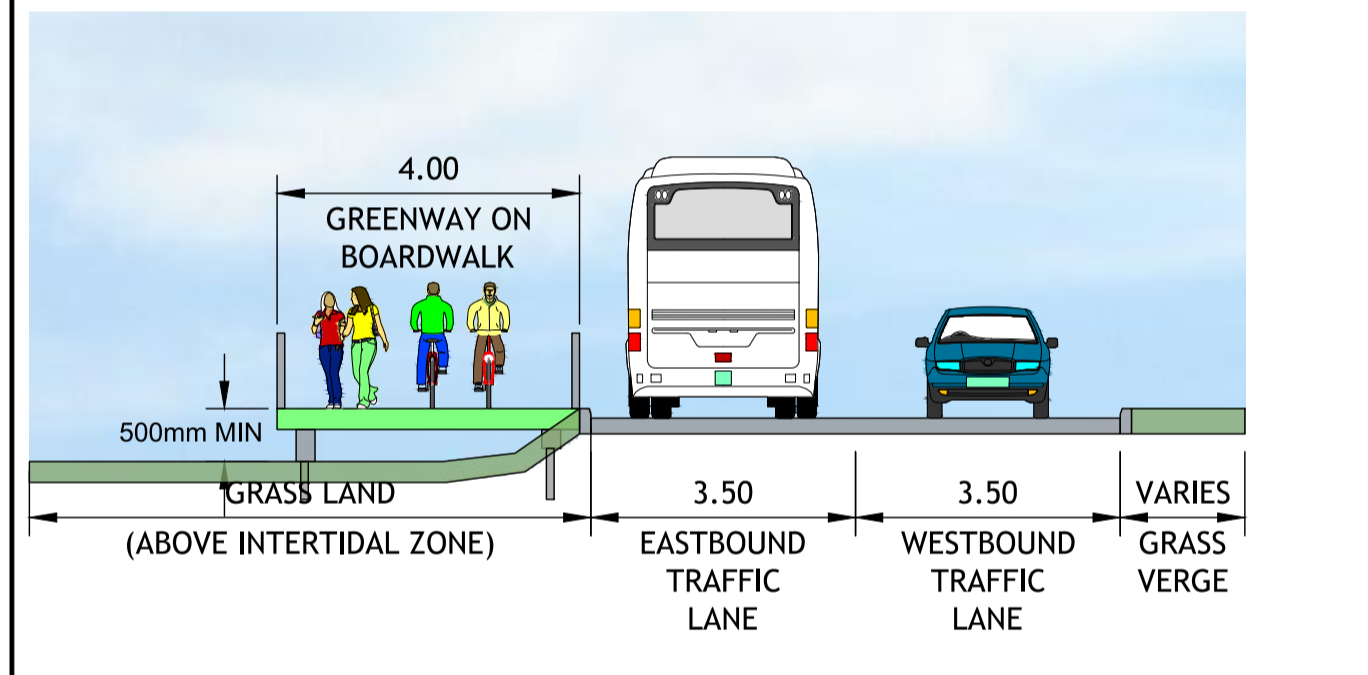
CLIENT
comhairle chontae na meath
meath county council

SCALE: 1:250 @A1 FILE REF: 170029-2200
DRG. NO. 170029-2213



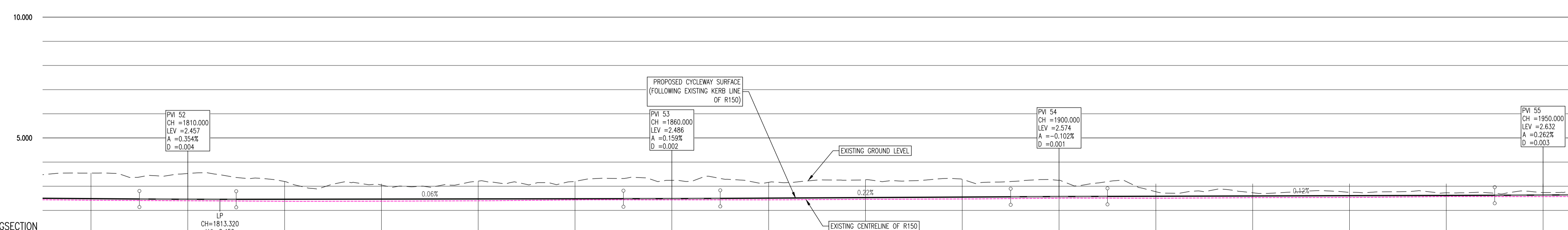
McMANUS TYRES

TYPICAL CROSS SECTION TYPE D-1 (CH 1810-1870)



DESIGN NOT YET AGREED WITH LOUTH COUNTY COUNCIL
FINAL LAYOUT SUBJECT TO AGREEMENT WITH LOUTH COUNTY COUNCIL

RAISED TABLE WITH ACCESS POINT TO GREENWAY



BOYNE GREENWAY LONGSECTION
SCALE: H 1:250, V 1:100.
DATUM: 0.000

CHAINAGE	EXISTING GROUND LEVELS	PROPOSED LEVELS	VERTICAL GEOMETRY	HORIZONTAL GEOMETRY
1800.000	3.544	2.466	R = 2825.513 K = 28.255 L = 10.000	R: 200.000 L: 2.185
1805.000	3.527	2.471		
1810.000	3.527	2.461	G = -0.059% 1:1681.6	L = 28.869
1815.000	3.196	2.460		
1820.000	3.050	2.463	R = 6277.498 K = 62.775 L = 10.000	R: 200.000 L: 3.678
1830.000	3.213	2.468		
1840.000	3.203	2.474	G = -0.219% 1:457.1	L = 24.826
1850.000	3.245	2.480		
1855.000	3.161	2.483	R = 9773.780 K = 97.738 L = 10.000	R: 200.000 L: 4.073
1860.000	3.270	2.488		
1865.000	3.161	2.497	G = 0.116% 1:858.7	L = 18.460
1870.000	3.286	2.497		
1880.000	3.270	2.508	R = 200.000 L: 5.630	L = 10.763
1890.000	3.286	2.508		
1895.000	3.248	2.563	R: 200.000 L: 5.963	L = 7.234
1900.000	3.248	2.573		
1905.000	2.774	2.580	R: 200.000 L: 8.809	L = 7.234
1910.000	2.774	2.585		
1920.000	2.730	2.597	R: 200.000 L: 11.793	L = 6.264
1930.000	2.752	2.609		
1940.000	2.770	2.620	R = 3820.326 K = 38.203 L = 10.000	R: 200.000 L: 11.793
1945.000	2.774	2.626		
1950.000	2.739	2.635	L = 10.228	L = 10.228
1955.000	2.739	2.635		