



Miontuairiscí / Meeting Minutes

Ashbourne Municipal District

Ordinary Meeting

10:00 a.m., 15th October 2019, Ashbourne Civic Offices

An Cathaoirleach, **Councillor Alan Tobin**, presided.

Councillors Present: Joe Bonner, Suzanne Jamal, Darren O'Rourke, Amanda Smith and Conor Tormey.

Officials in Attendance:

Head of Finance: Fiona Lawless

Executive Engineer: Mel Cronin

Staff Officer: Triona Keating

Clerical Officer: Edita Zolotuchina

Apologies: Claire King, Meetings Administrator

1 Confirmation of Minutes

1.1 Confirmation of minutes of Ordinary Meeting held on, 10th September, 2019.

The minutes of the Ordinary Meeting held on 10th September, 2019 were confirmed on the proposal of **Councillor Conor Tormey** and seconded by **Councillor Darren O'Rourke**.

2 Matters arising from the Minutes

Councillor Darren O'Rourke requested an update on the Tara Management Plan – It was confirmed that the National Monument Services are managing and leading this plan and a draft of the plan is with them. An update was requested but none has been received to date. It was agreed to issue a letter to the Department requesting an update and inviting them to a future meeting to discuss same.



Miontuairiscí / Meeting Minutes

Councillor Alan Tobin requested that dummy cameras be installed at the playground to act as a deterrent.

3 Expressions of Sympathy and Congratulations

Sympathy was extended to:

- The O'Donnell family on the death of their son and brother Odhrán.

Congratulations were extended to:

- The successful teams in Donaghmore Ashbourne and all Men's, Ladies and Juvenile teams.

4 Statutory Business

4.1 Transportation

- 4.1.1 To receive a Progress Report on works undertaken/planned for Ashbourne Municipal District.

The report had been circulated in advance. Mel Cronin, Executive Engineer provided an update on the R125 whereby discussions with the landowner, regarding remedial works at the R125 Swords Road embankment near Donaghmore Bridge.

Matters raised by councillors included:

- Requested an update on remedial works from the last heavy rains – it was confirmed that the gully cleaning contractor has commenced, water cuts on the regional road network have been carried out and there are 1,500 sand bags ready to go from three locations.
- Asked about the possibility in putting in the 3 types of compactor bins at the playground – it was agreed that this would be looked into.



Miontuairiscí / Meeting Minutes

- Requested another bin in Stamullen.
- Asked of the wheelchair space could be reviewed at the school in Stamullen on the Cockhill Road.

4.1.2 To discuss Primatestown/Kilmoon Cross Junctions

Sept 2019 - Roughan & O Donovan Limited (in JV with Aecom Ireland Ltd)(ROD-AECOM) appointed as design consultants;

Oct 2019 – ROD-AECOM consultants are drafting Concept and Feasibility reports for the scheme;

Oct 2019 – Drafting of Section 85 agreement with Fingal County Council ongoing.

An update had been circulated in advance and the progress was welcomed by councillors.

Matters raised by councillors included:

- Requested an update on the project at Curragha in relation to Irish Water and asked if there would be an opportunity to discuss detail design with residents – it was advised where Irish Water are bringing the new watermain down the road and the element of the works taken out is road surfacing and ramps. The ramp at the pedestrian crossing at the church may still go ahead. The realignment of the junction will involve turning and stopping. Drainage, public lighting and signage are included as part of that. The municipal district will be maintaining potholes as they arise. After watermain is in place the entire section of the road will be surfaced following by road markings.
- Asked about the possibility of bringing a sewerage pipe down the same time as the water pipe – it was confirmed that there are no plans to do this as it would be a major additional project and it is not on any investment project.



Miontuairiscí / Meeting Minutes

- The need for a co-ordinated approach between Transportation and Irish Water.

4.2 Water Services

- 4.2.1 To receive an update on water and wastewater related issues in Ashbourne Municipal District.

Gerry Boyle, Senior Engineer, Water Services detailed the link between Meath County Council and Irish Water and respective their roles. He also provided a comprehensive overview of water and wastewater services in the municipal district and in Ashbourne in particular but also including Stamullen and Kentstown.

Declan Gaffney, Project Manager for Ashbourne Bottleneck Project also attended and outlined the project and reasons for it.

Matters raised by councillors included:

- Asked if there were any plans to upgrade the capacity a the Rath Reservoir – apart from a pump upgrade, no works are being carried out at the Rath Reservoir, however, as part of the bottleneck project additional storage will be provided a Windmill Hill which will provide the capacity needed.
- The need to be kept informed of works as they are being carried out and the provision of a stop and go system and proper signage to redirect traffic where necessary – it was pointed out that Ashbourne Municipal District issue road opening licences which are applied for by Irish Water, and conditions are set out e.g. stop-go traffic management. The municipal district co-ordinates with all utilities in respect of road opening licences. Works are monitored and changes are made to traffic management if necessary.
- Welcomed the planned wastewater link up with Balbriggan for Stamullen and asked Ashbourne is not supplied with water from Fingal – it was advised that a small supply comes into Ashbourne from Fingal



Miontuairiscí / Meeting Minutes

at Coolquay. There is a plentiful supply of water available to Ashbourne from the East Meath WSS, the issue is getting it to where it is needed through a pipeline that isn't bursting every couple of months. In addition, until the proposed river Shannon supply to Dublin is realised (expected in 2027) the Dublin water supply is on a knife edge and does not have the capacity to serve Ashbourne.

- Requested an update for Kilbride wastewater pumping station – this PS was upgraded and expanded in 2010 - there are no plans for further expansion to serve Kilbride as it was built as an intermediary pump station to serve Ashbourne and Ratoath. The bigger issue for Kilbride is the water outages due to trunkmain bursts, because Kilbride is on the tail end of the Ratoath supply.
- Asked what the capacity was for Windmill Hill reservoir – it is intended to double it's capacity by adding a further 2,500 cubic metres of storage.
- Referred to an odour issue with Irish Water asset in Woodview Estate in Bellewstown and asked if there was a plan or solution for this – it was agreed to check this out.
- Asked how the priorities of Meath County Council are aligned with those of Irish Water – Meath County Council Water Services work closely and collaboratively with Irish Water and also with Meath County Council Planning Department especially now with the review of the County Development Plan, as water and wastewater capacity is critical to facilitating the planned development and growth of the county. Meath County Council liaise very closely with Irish Water and make cases to them and persuade them to invest in necessary Water Services infrastructural provision. A report is done on every planning application that comes in through the county including SHD applications.
- Queried ownership of the networks in the back gardens – Meath County Council Water Services Dept are very aware of this issue and apply a lot of discretion to it. The policy of Irish Water hasn't changed, however, there is talk that the CRU (Commission of Regulation and Utilities) who regulates Irish Water may require Irish Water to assume



Miontuairiscí / Meeting Minutes

responsibility for shared wastewater services within property boundaries. Solely private wastewater connections would remain the responsibility of householders.

- Issue of rural poverty. There are people in this municipal district with no water supply receiving tankers of water from Meath County Council. It was asked if there are many people in this situation – it was confirmed that there are just two or three cases in the county where Meath County Council Water Services Dept supply tankers of water to homes. A well grant is available but is of no use if funds are not available to do the work.

- Referred to works carried out by Irish Water from Kilmoon Cross to Duleek which road reinstatement was very poor. Meath County Council advised that these were unplanned watermain burst repairs.

- Referred to no attenuation at the pumping station in Ashbourne when a breakdown occurs – it was advised that this pumping station does have substantial emergency / storm storage but when this storage is utilised the PS is designed to overflow during a storm or a breakdown which can mean discoloured water heads out into the watercourse. It is designed and licensed on the basis that certain amount of overflows can happen.

- As Kilbride is on the end of the trunkline it was asked if they could work with Fingal to take from their supply – it was confirmed that this is not possible at the moment because Dublin area is very much on a knife edge where demand is starting to exceed supply. If the Shannon project happens by 2027 as is hoped there will be a surplus of water in the greater Dublin Area and at that stage there will be enough water to send from Dublin back out into areas such as Ashbourne. In this regard, it was advised that Meath County Council Water Services Department is currently working on the planning stage of a project involving a pipeline link between Ratoath and Kilshane in Fingal. When realised this new pipeline will allow East Meath to be supplied with water from Dublin (post 2027) as an alternative if there were any problems on the East Meath WSS.



Miontuairiscí / Meeting Minutes

- Referred to works being carried out by the OPW in Huntsgrove and asked how these would tie in with the laying of the new line from Huntsgrove to Brookville – Meath County Council Water Services Department has been co-ordinating with the OPW and with their own staff who are dealing with that.
- The need for upkeep of some of the pump stations in particular the Millenium Pumping Station – this will be dealt with.
- Asked if the line brought around Castle Street would allow Churchfields to connect into it as it is on a private system – one of the purposes for carrying out the bottleneck project is that Churchfields can be supplied from that.
- Asked about the capacity of water and sewerage at Kilbride – it was confirmed that there is no capacity issue with the water, the main problem is interruption to supply from the bursts on the trunk main. With regard to the sewerage the function of the pump station is to serve Ashbourne and Ratoath and they are pumped from Kilbride into Mulhuddart.
- Requested an update on the odour issue in Kilbride – it was advised that odour became a problem back in 2010 when a huge amount of work was carried out. Meath County Council Water Services Department are managing this but it is a consistent challenge as the issue is influenced by various factors including, temperature, rainfall, flow volumes, etc. The capacity of it was upgraded back in 2010, in terms of supplying local area would be difficult. Every time you give a connection into it, it gives another route for the odours to make their way out of the sealed system. This is an ongoing management issue in terms of odours.

Gerry Boyle and his team were commended for their work and councillors thanked Gerry and Declan for the updates.

4.3 Community



Miontuairiscí / Meeting Minutes

4.3.1 To receive an update on the Ashbourne Linear Park.

Fiona Fallon, Senior Executive Engineer, Community Department provided an update on works underway and confirmed that the official opening of the Playground will take place on Thursday, 24th October. Once the final account is agreed and finalised they will be in a better position to see what funding is available and what further works can be done.

Matters raised by councillors included:

- Asked if the reception could be held at the Amphitheatre.
- The need to have mipex laid underneath the bark to prevent weeds coming through.
- Requested dummy cameras be installed at the playground.
- The need to have the playground closed at night until after the 1st November. It is hoped to have the lights turned on by the 24th October, if not the playground will remain closed at night time until the lights are operational. The lights will be set up to dim during certain hours and can be adjusted.
- Asked what extent of the park comes under Park Bye Laws – it was confirmed that it includes the confines of the park itself and appropriate signage will be put up accordingly.
- Asked if measures were in place to deal with litter management as extra manpower will be required for the upkeep of the area – it was confirmed that there is a one year maintenance contract which includes cutting the grass.
- Expense on consultants and the need for clear transparent assessment of the cost of the project. Indication of overruns of time and financial implications. All has implications for where we go next with this project. Has concerns with update on Zones 1, 2 and 3 where no works can be completed along the



Miontuairiscí / Meeting Minutes

river. Need to keep every option open. When we have a full appraisal of this project everything needs to be on the table as to where we progress with the rest of this project rather than close the door on a number of phases. – it was advised that a commitment cannot be given to develop other zones as we are not in ownership of a significant amount of land. The budget has been spent and there are no proposals to develop any other zones.

- Is the contractor being compensation for the time he was not allowed to work when the river was out of bounds – it was confirmed that a claim has been submitted and is being assessed by Consultants at present.
- Requested that the Ashbourne Park be placed as a standing item on the agenda – it was confirmed that if updates are available they will be provided.
- This is a welcoming development.

4.3.2 To receive details of the allocations under the Community Amenity Project Scheme 2019 and if in agreement, recommend to the full Council of Meath County Council for approval.

Fiona Fallon, Senior Executive Officer, Community Department outlined the background to the scheme, the appraisal process, details of applications received from Ashbourne Municipal District area and recommended grant offers.

The recommendations were agreed on the proposal of **Councillor Joe Bonner** and seconded by **Councillor Conor Tormey**.

It was also suggested that the Ashbourne Municipal District and Meath County Council crests be displayed by the groups receiving the grants.

5 Notice of Question

5.1 Submitted by Councillor Amanda Smith



Miontuairiscí / Meeting Minutes

“With reference to the decision of An Bord Pleanála regarding the proposed Link Road in Stamullen it stated that:

‘The Board is not satisfied that the proposed development would not adversely affect the strategic role and function of the national road network.’

What actions have the Council taken since that decision to reconcile the discrepancy between the Board’s decision and the Council’s Grant of permission, in respect of the affect that the development of the road connection would have on the national road network?”

Response:

Meath County Council considers that its plans contain sufficient policies and objectives to support the provision of a road link which would improve connectivity and permeability in Stamullen and create a more sustainable settlement. The objective of the plan to advance the possible upgrading of M1 Junction 7 to improve its capacity inclusive of the facilitation of vehicular access to / from Stamullen via the City North Business Campus to the M1 Interchange is reaffirmed in the draft County Development Plan 2020-2026.

The road in question is to be delivered by private developers. The developer will have to take their own view of Board’s decision and the comments included in the Inspector’s report and any future application will have to address the reasons for refusal given by An Bord Pleanála for the link road (MCC Ref AA170598; ABP Ref 301284-18).

We note that the Board was *‘not satisfied that the proposed development would not adversely affect the strategic role and function of the national road network. The proposed development would, therefore, conflict with policies to protect investment in national roads, as set out in the “Spatial Planning and National Roads Guidelines for Planning Authorities” issued by the Department of the Environment, Community and Local Government in January, 2012’*. In the Inspector’s Report, it states that the Inspector had read the applicant’s Traffic Impact Assessment (TIA) and in general accepted the overall findings. However, it was also noted that the TIA assumed that the proposed link road will not alter volumes of traffic joining or leaving the motorway at Junction 7 and the Inspector considered that this scenario is unlikely. The Inspector went on to say that *‘The assessment, therefore, has no regard for the likely indirect effects of the connection of Stamullen to the motorway i.e. how it would affect traffic movements in the area to the west of Stamullen and potentially other junctions and flow patterns on the M1. Given the strategic economic importance of the M1 linking the*



Miontuairiscí / Meeting Minutes

*capital City to Belfast, the very clear policies at national and regional level which seek to safeguard the carrying capacity of the national road network, **such an omission is significant.** In addition to the above, in the absence of a wider assessment of the implications of the development for traffic flows in the region, the development could result in unforeseen traffic flows through the residential lands to the south of the site (including HGVs) and the junction of this estate road with Gormanstown Road, to the detriment of residential amenity and amenity of the village of Stamullen.'*

The response was noted.

Councillor Smith requested further clarification as follows:-

It is clear that the inspector is pointing out that his concern is how it would affect traffic movements in the area to the west of Stamullen and potentially other junctions and flow patterns on the M1.

1. Are the executive suggesting they are expecting a developer to take up the inspectors clear direction in order to advance the plans and objectives contained in the "Development Plan" to support the provision of a link road which would improve the connectivity and permeability in Stamullen and create more sustainable settlement?
2. What is the executive's role and responsibility in advancing plans and objectives such as this contained our development plan?
3. Under what circumstances would a developer take on a role that certainly looks like the role of local authority?

5.2 Submitted by Councillor Alan Tobin

"How will the proposed beach management plan for Bettystown/Laytown affect the section of beach in the Ashbourne Municipal District? If an Ashbourne Municipal District section comes under the plan, why has Ashbourne Municipal District been excluded from any consultation in past, present or future plans & proposals?"

Response:



Miontuairiscí / Meeting Minutes

The Beach Management Plan covers the area of the beach between the River Nanny estuary in Laytown up to the Boyne Estuary in Mornington and represents the area which is subject to the highest footfall levels. Within this area which accounts for circa 50% of the total beach, is the designated bathing waters area in Bettystown and the accompanying services including beach lifeguard facilities.

The area also facilities other services including ample car-parking , nearby toilets, designated access points and presents opportunities for all year round recreational and sporting activities. The provision of such services and facilities are just some of the criteria necessary to obtain Blue Flag status which is an objective of the plan to achieve.

While this plan area facilities easier deployment of resources including a full time Beach Warden during the summer months, it is pointed out that the full extent of beach receives attention from Council staff on a regular basis and including beach cleaning , removal of vehicles etc as well as supports to local community groups involved in beach enhancement activities. It is not envisaged that the beach management plan will change this situation.

It is pointed out that the Beach is seen as an amenity that serves not just the immediate surrounding area but has a County wide and beyond appeal ,and this is reflected in the many submissions received during the display period of the draft plan and the display of the proposed revisions to the Fore Shore By-Laws the adoption of which is a function of the full Council.

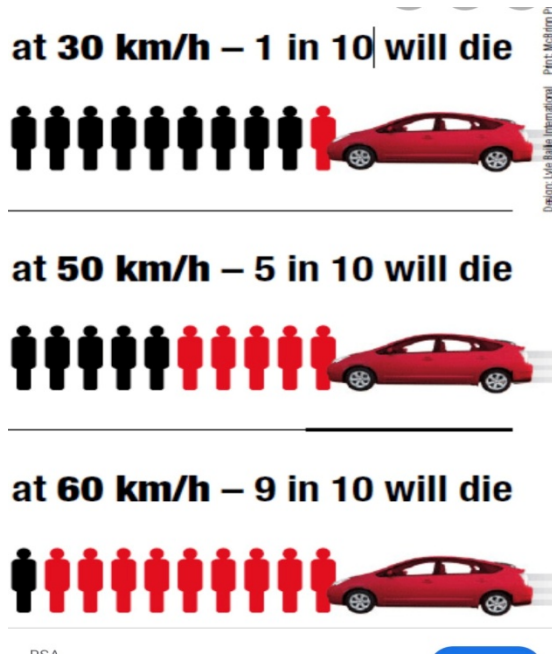
The response was noted.

6 Notice of Motion

6.1 Submitted by Councillor Alan Tobin

“To request the reduction of the speed limit on the R152, outside Cushinstown N.S, from the current limit of 60km/h to 50km/h. This is to enhance the local area for residents, try to encourage walking and cycling to school and reduce the potential of a serious incident or death.”

Miontuairiscí / Meeting Minutes



Supporting information subject to the motion being proposed, seconded and considered:

The current Special Speed Limit Bye-Law for County Meath was adopted by the Members at the full council meeting in December 2018 and came into effect in April 2019. Any change to the speeds in this bye law would have to be done by drafting a new bye law for adoption by the members.

The county wide speed limit review is a considerable body of work and the current national guidelines indicate they should be updated every 5 years.

We note that there is currently a 50km/h speed limit on the L-50104 local road at the school and we can confirm that the R152 at Cushinstown has been added for review as part of the next speed limit review. However, it should be noted that any proposed change to a speed limit has to have regard to the national guidelines in place at the time of the review.

The motion was proposed by **Councillor Alan Tobin** and seconded by **Councillor Suzanne Jamal**.

The motion was adopted.



Miontuairiscí / Meeting Minutes

7 Correspondence

- 7.1 Correspondence received from the Department of Housing, Planning and Local Government in response to the Notice of Item 7.2 – Notice of Motion as adopted at the September meeting re concerns over the lack of proper communication and consultation with the public by Irish Water.

The correspondence was noted.

8 Any Other Business

- 8.1 Fiona Lawless reminded Councillors of the following:

- Thursday, 24th October, 2.30 p.m. Official opening of the playground.
- Tuesday, 29th October, Pride of Place Awards
- Tuesday, 29th October Irish Water are holding a community information meeting on the Broadmeadow river.
- Wednesday, 6th November, 12.00p.m. Municipal District Meeting to discuss the General Municipal Allocation.
- Tuesday, 12th November, 9.00a.m. November meeting of Ashbourne Municipal District.

- 8.2 Councillor Conor Tormey raised the following issue:

- 8.2.1 Requested an update on the footpath at the nine mile stone – it was advised that there is no funding available for this project.

- 8.3 Councillor Darren O'Rourke raised the following issue:

- 8.3.1 Referred to an initiative in Carrickmacross of a reverse vending machine for plastic bottles – it was advised that one of these machines is going into Supervalu in Ashbourne.

- 8.4 Councillor Joe Bonner raised the following issue:

- 8.4.1 The need for public lighting behind Crenigans Bánóg on the Milltown Road



Miontuairiscí / Meeting Minutes

between the bridge and the school.

This concluded the business of the meeting.

Signed:

Cathaoirleach