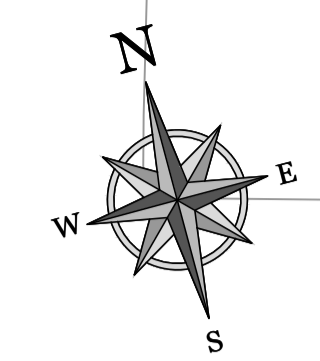
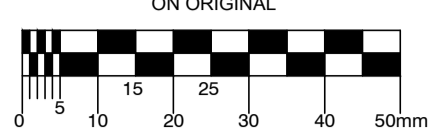


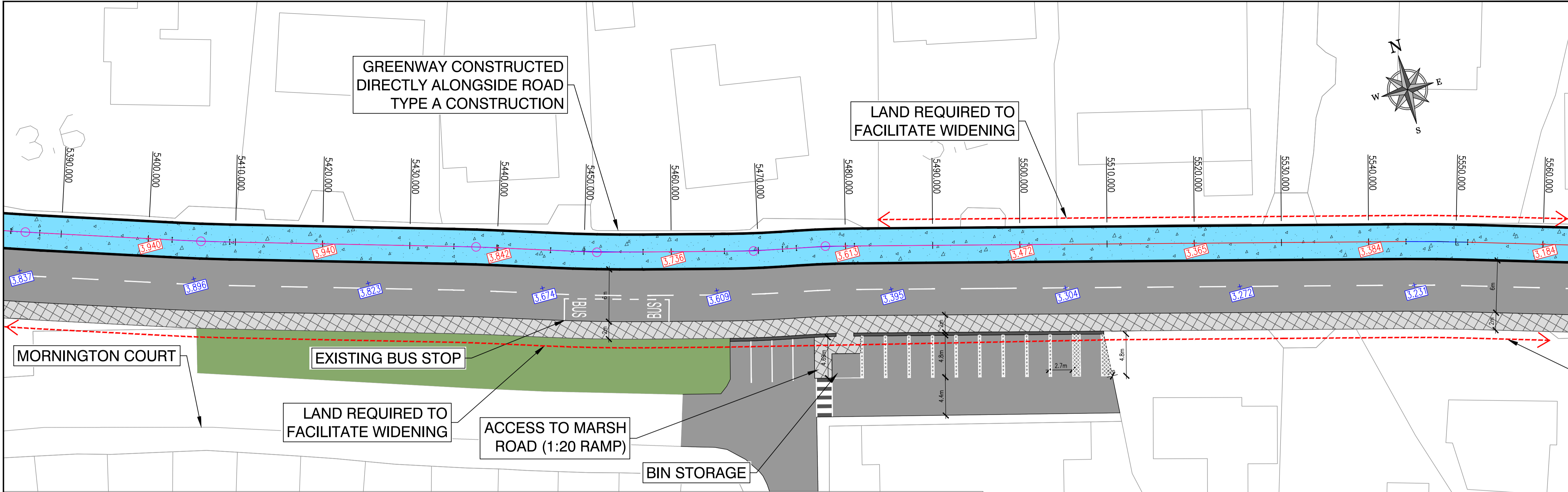
© COPYRIGHT OF THIS DRAWING IS RESERVED BY DBFL CONSULTING ENGINEERS. NO PART SHALL BE REPRODUCED OR TRANSMITTED WITHOUT THEIR WRITTEN PERMISSION.



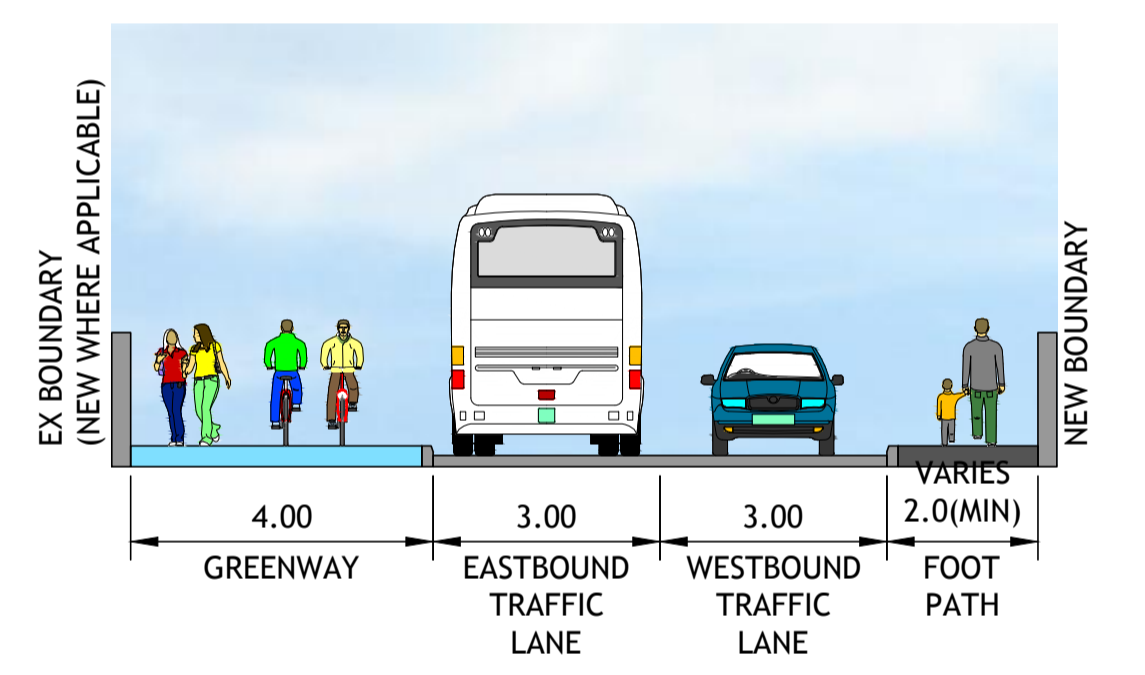
NOTES:
GENERAL NOTES:
1. ALL CO-ORDINATES ARE TO IRISH NATIONAL GRID (BASED ON OS MAPPING)
2. ALL LEVELS ARE TO ORDNANCE DATUM MALIN HEAD (BASED ON LEAS SURVEY INFORMATION)
3. ALL DIMENSIONS IN METRES UNLESS SPECIFIED OTHERWISE

LEGEND:

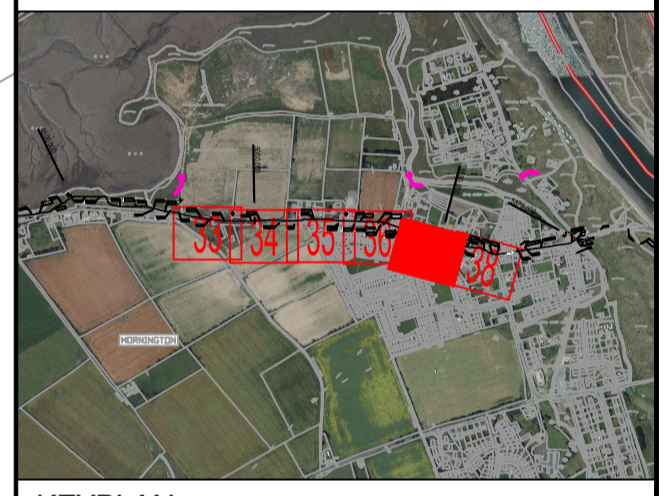
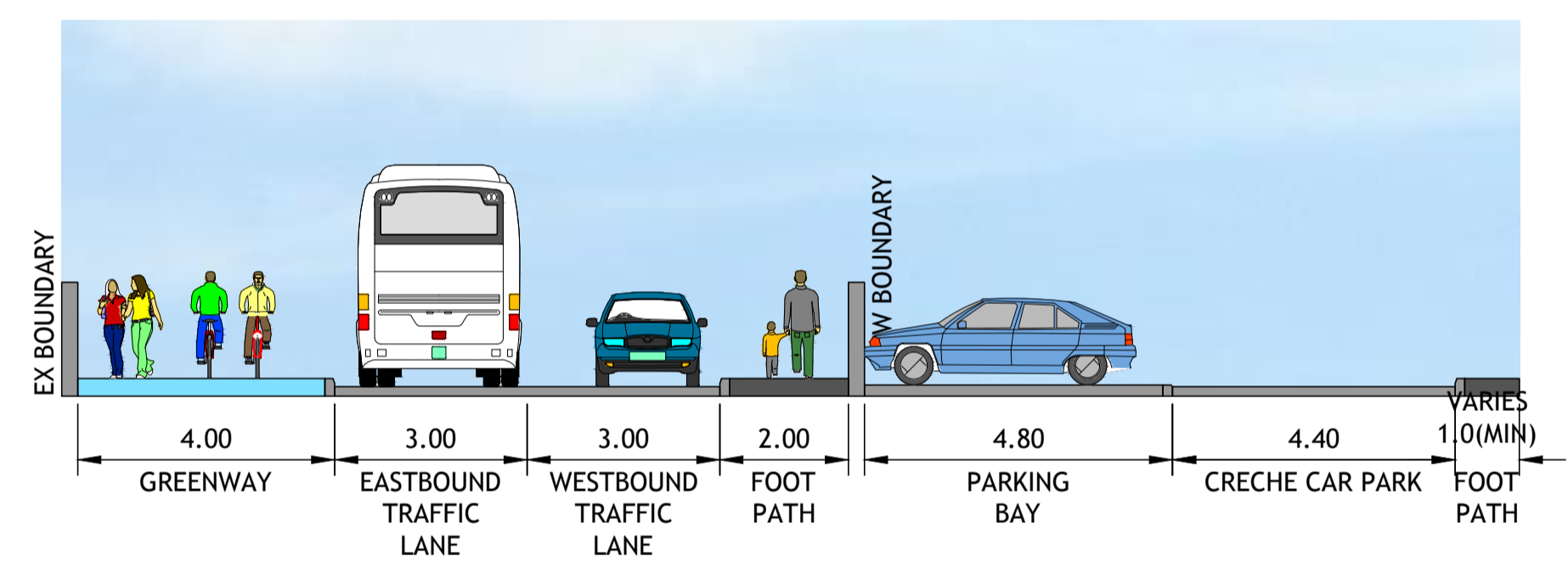
- Type A Construction Section Bituminous Construction (Alongside Road)
- Type B Construction Section Bituminous Construction (Away From Road)
- Type C Construction Section Boardwalk Construction
- Type D Construction Section Local Bridge
- Proposed Footpath
- Existing River / Water Course
- Existing Road
- Existing Footpath
- Raised Table
- Possible Land Acquisition
- Existing Road Level
- Proposed Greenway Level



TYPICAL CROSS SECTION TYPE A-6 (CH 5390-CH 5460)



TYPICAL CROSS SECTION TYPE A-5 (CH 5485-CH 5510)



KEYPLAN

P4	10-07-20	PLANNING	PGC	MPK
P3	20-04-20	REVISED ALIGNMENT CH 5320-5500	DJG	MPK
P2	17-02-20	CRECHE PARKING REVISED	DJG	MPK
PT	30-08-19	NON-STATUTORY CONSULTATION	DJG	MPK
REV	DATE	DESCRIPTION	BY	CHKD

STATUTORY PUBLIC CONSULTATION

DESIGNED	MPK	PREPARED	DJG
DATE	AUG 2019	CHECKED	RLK

DBFL Consulting Engineers

Dublin Office: Ormond House, Upper Clarendon Quay, Dublin 7, Ireland. PHONE: +353 1 400 4000 FAX: +353 1 400 4050

Waterford Office: Unit 2, The Chandlery, 1-2 O'Connell Street, Waterford, Ireland. PHONE: +353 51 308 5500 FAX: +353 51 844 813

DBFL Consulting Engineers email: info@dbfl.ie site: www.dbfl.ie

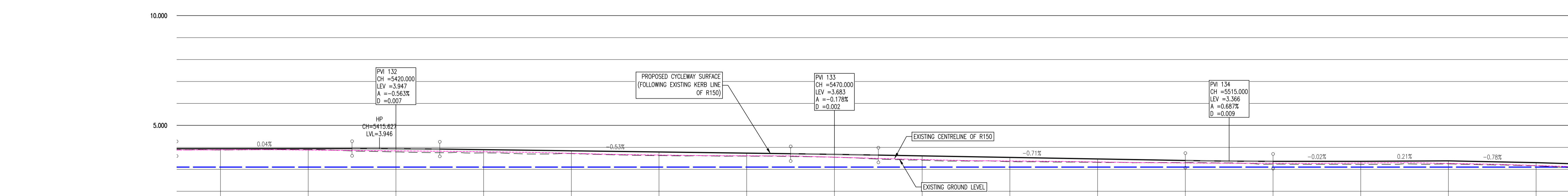
PROJECT
BOYNE GREENWAY
DROGHEDA TO MORNINGTON

DRG. TITLE
PROPOSED ALIGNMENT SHEET 37

CLIENT

comhairle chontae na mírleath county council

SCALE: 1:250 @A1 FILE REF: 170029-2200
DRG. NO. 170029-2237 P4



BOYNE GREENWAY LONGSECTION
SCALE: H 1:250, V 1:100.
DATUM: 0.000

CHAINAGE	5400.000	5410.000	5415.000	5420.000	5425.000	5430.000	5440.000	5450.000	5460.000	5465.000	5470.000	5475.000	5480.000	5490.000	5500.000	5510.000	5515.000	5520.000	5530.000	5540.000	5550.000	
EXISTING GROUND LEVELS	3.881	3.895	3.923	3.940	3.921	3.895	3.842	3.789	3.736	3.710	3.681	3.648	3.613	3.542	3.472	3.401	3.374	3.365	3.363	3.225	3.248	3.161
PROPOSED LEVELS	3.940	3.944	3.946	3.940	3.921	3.895	3.842	3.789	3.736	3.710	3.681	3.648	3.613	3.542	3.472	3.401	3.374	3.365	3.363	3.225	3.248	3.161
VERTICAL GEOMETRY	G = 0.035% L = 2832.8		R = 1774.989 K = 17.750 L = 10.000		G = -0.528% L = 1188.4		R = 5621.868 K = 56.219 L = 10.000		G = -0.706% L = 1147.7		R = 1456.258 K = 14.563 L = 10.000		G = -0.019% L = 15198.0		G = 0.213% L = 1468.4		G = -0.782% L = 1127.8					
HORIZONTAL GEOMETRY	5.207	R: 200.000 L: 6.599		L = 25.729		R: 200.000 L: 10.608		L = 6.032		L = 9.338		R: 110.000 L: 6.665		L = 1.591		R: 110.000 L: 6.665		L = 63.263		R: 200.000 L: 7.080		