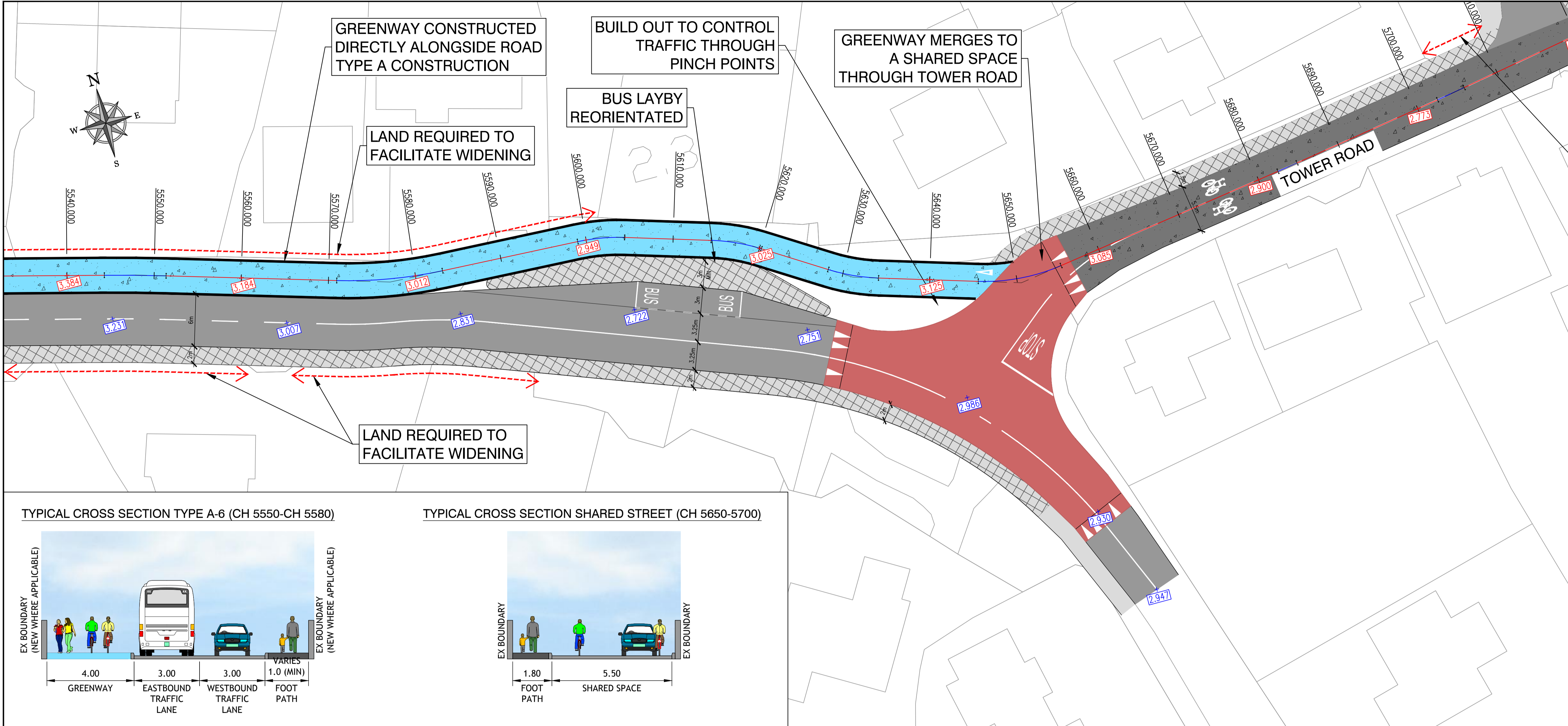


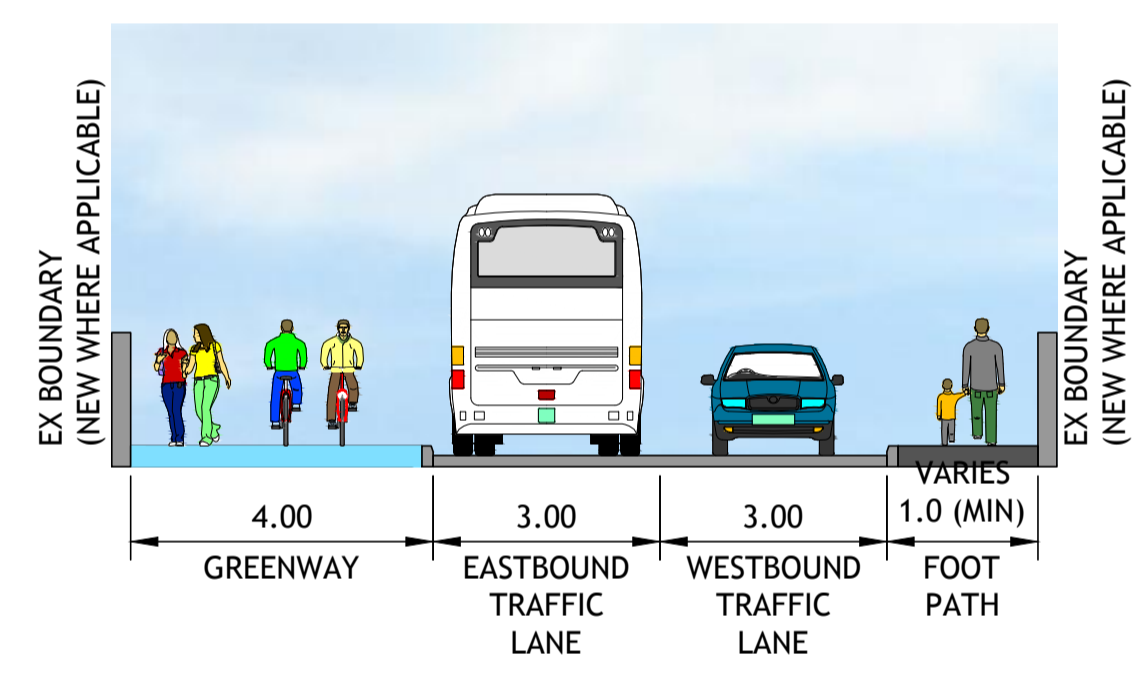
- NOTES:
- GENERAL NOTES:
1. ALL CO-ORDINATES ARE TO IRISH NATIONAL GRID (BASED ON OS MAPPING)
 2. ALL LEVELS ARE TO ORDNANCE DATUM MALIN HEAD (BASED ON LEAS SURVEY INFORMATION)
 3. ALL DIMENSIONS IN METRES UNLESS SPECIFIED OTHERWISE

LEGEND:

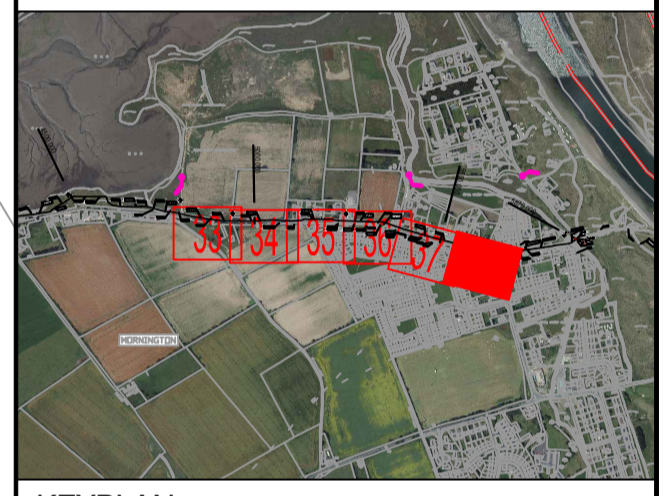
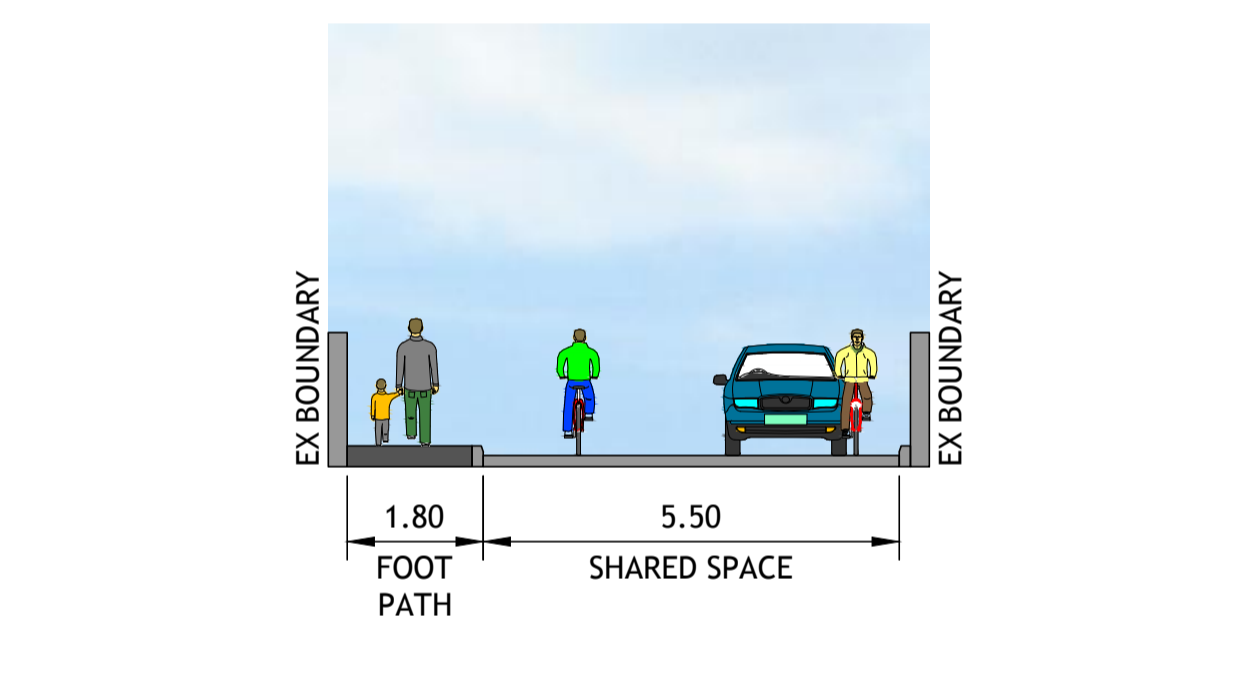
- TYPE A CONSTRUCTION SECTION BITUMINOUS CONSTRUCTION (ALONGSIDE ROAD)
- TYPE B CONSTRUCTION SECTION BITUMINOUS CONSTRUCTION (AWAY FROM ROAD)
- TYPE C CONSTRUCTION SECTION BOARDWALK CONSTRUCTION
- TYPE D CONSTRUCTION SECTION LOCAL BRIDGE
- PROPOSED FOOTPATH
- EXISTING RIVER / WATER COURSE
- EXISTING ROAD
- EXISTING FOOTPATH
- RAISED TABLE
- POSSIBLE LAND ACQUISITION
- EXISTING ROAD LEVEL
- PROPOSED GREENWAY LEVEL



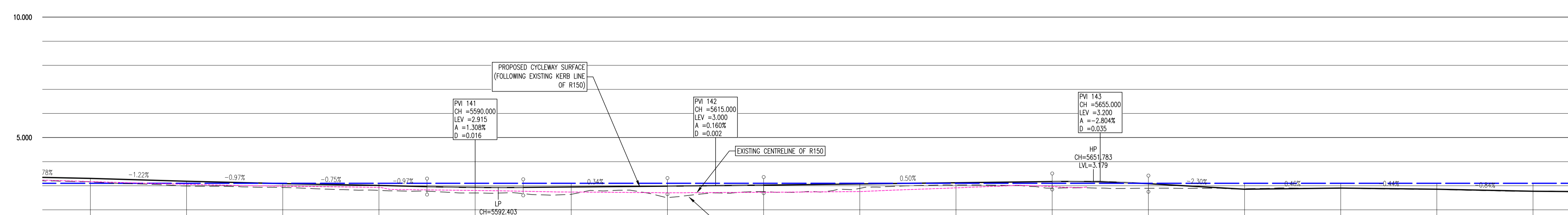
TYPICAL CROSS SECTION TYPE A-6 (CH 5550-CH 5580)



TYPICAL CROSS SECTION SHARED STREET (CH 5650-5700)



KEYPLAN



BOYNE GREENWAY LONGSECTION
SCALE: H 1:250, V 1:100.
DATUM: 0.000

CHAINAGE	EXISTING GROUND LEVELS	PROPOSED LEVELS	VERTICAL GEOMETRY	HORIZONTAL GEOMETRY
5550.000	3.161	3.306	7.82% 27.8	R: 200.000 L: 7.080
5560.000	2.991	3.184	G = -1.216% -1.82.2	L = 19.577
5570.000	2.926	3.087	G = -0.971% -1.103.9	
5580.000	2.888	3.012	G = -0.754% -1.132.7	R: 51.000 L: 12.220
5585.000	2.863	2.863	G = -0.969% -1.103.2	L = 15.859
5590.000	2.698	2.931	R = 764.268 K = 7.643 L = 10.000	
5595.000	2.932	2.932	G = 0.340% -1.294.3	R: 22.000 L: 5.407
5600.000	2.644	2.949		L = 9.933
5610.000	2.520	2.883	R = 6243.401 K = 62.434 L = 10.000	R: 22.000 L: 5.864
5615.000	3.002	3.002	G = -0.500% -1.200.0	L = 8.026
5620.000	2.756	3.025		R: 22.000 L: 5.868
5630.000	2.891	3.075		L = 11.443
5640.000	3.027	3.125	R = 356.657 K = 3.567 L = 10.000	R: 22.000 L: 9.751
5650.000	2.888	3.175	G = -2.304% -1.43.4	L = 8.026
5655.000	2.853	3.165	G = -0.458% -1.218.0	
5660.000	2.893	3.085	G = -0.439% -1.227.8	R: 200.000 L: 2.391
5670.000	2.876	2.854	G = -0.839% -1.179.2	L = 17.664
5680.000	2.892	2.900		R: 200.000 L: 2.391
5690.000	2.853	2.856		L = 17.664
5700.000	2.770	2.773		R: 200.000 L: 2.391

P2	10-07-20	PLANNING	PGC	MPK
PT	30-08-19	NON-STATUTORY CONSULTATION	DJG	MPK
REV	DATE	DESCRIPTION	BY	CHKD

STATUTORY PUBLIC CONSULTATION

DESIGNED	MPK	PREPARED	DJG
DATE	AUG 2019	CHECKED	RLK

DBFL Consulting Engineers [email: info@dbfl.ie](mailto:info@dbfl.ie) [site: www.dbfl.ie](http://www.dbfl.ie)

PROJECT
BOYNE GREENWAY
DROGHEDA TO MORNINGTON

DRG. TITLE
PROPOSED ALIGNMENT SHEET 38

CLIENT
comhairle chontae na m...