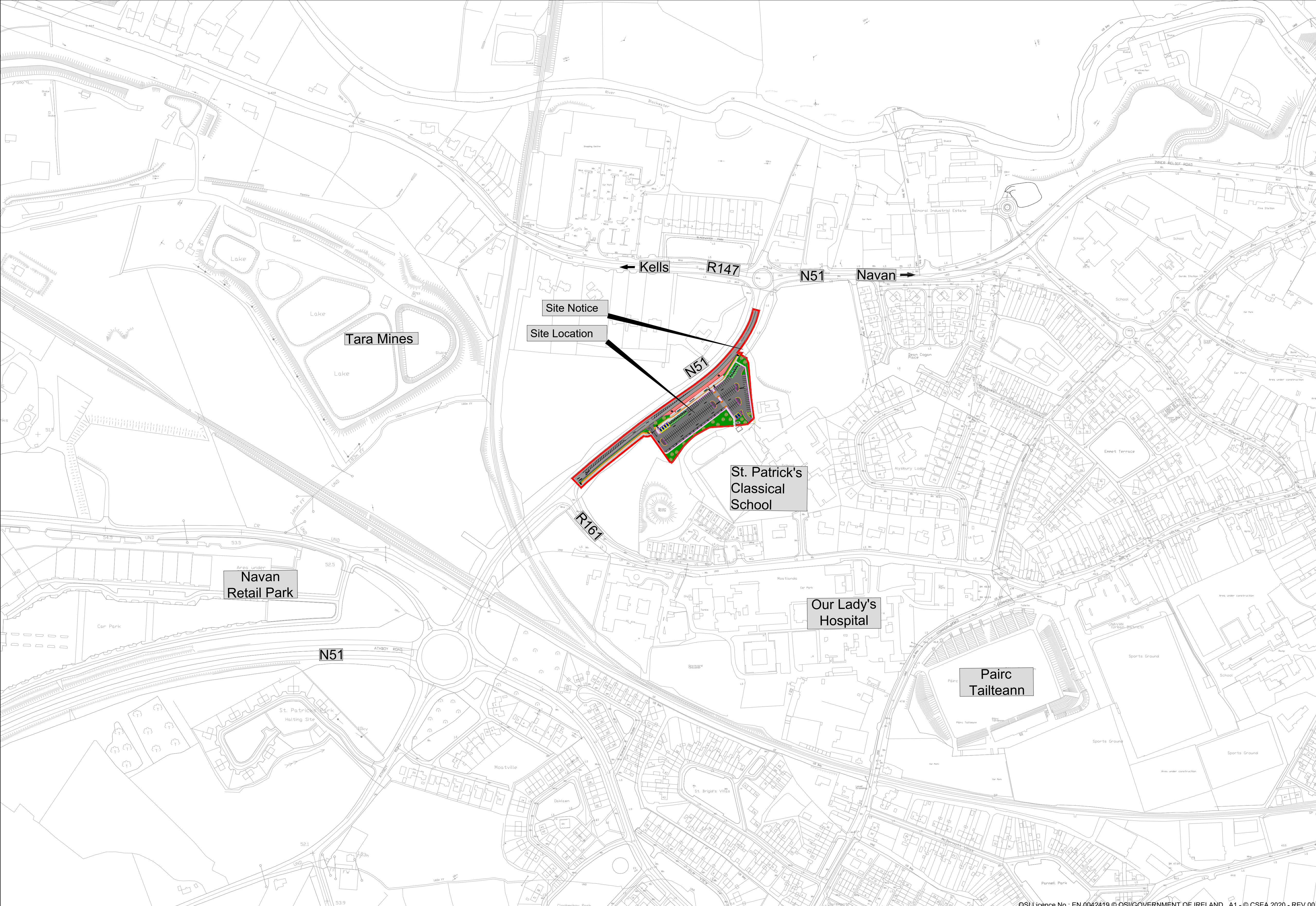


PART VIII - PUBLIC DISPLAY

N51 PARK & RIDE FACILITY

This drawing is produced using the Irish Transverse Mercator (ITM) Geographic Coordinate System

A1



P01	For Planning	TOB	MC	12.10.20
Rev	Description	Drawn	Checked	Date

Clifton Scannell Emerson Associates Limited
Consulting Engineers,
Seaforth Lodge,
Castledawson Avenue,
Blackrock, Co. Dublin,
Ireland, A94 P768
T: +353 1 288 6006
F: +353 1 283 3466
E: info@csea.ie
W: www.csea.ie

Client: Comhairle Chontae na Mí Meath County Council
 Project: Navan Town Scheme - Navan 2030
 N51 Park & Ride Facility
 Part VIII - Public Display
 Site Location

Drawn By: TOB Checked By: MC Date: OCT 2020

Project Code: 18_090F - CSE - GEN - XX - DR - C - 2001

S2 For Issue 1:1000

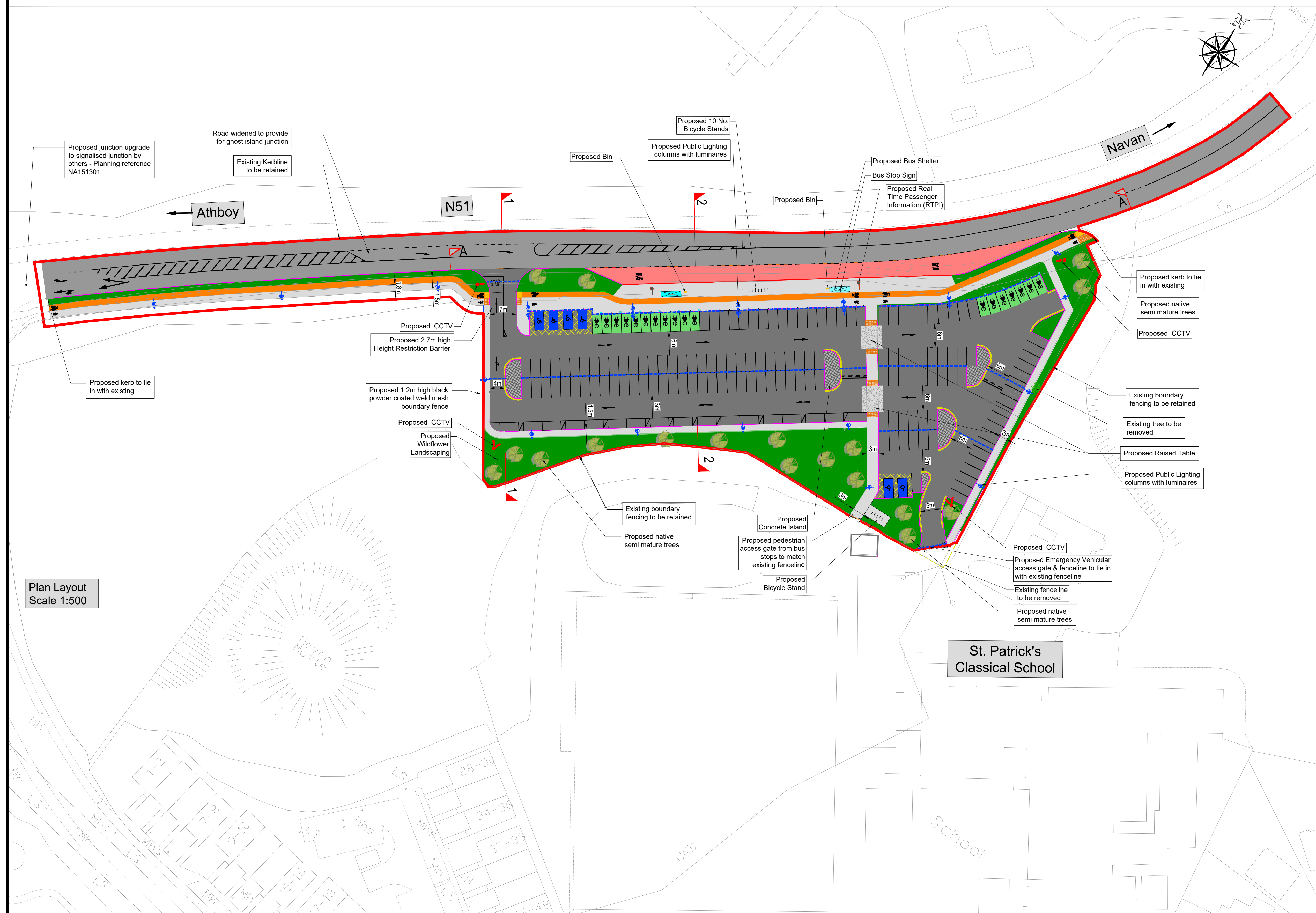
Status Code: P01 For Planning Scale @ A1

Revision: 18_090F CSEA Job No.

PART VIII - PUBLIC DISPLAY N51 PARK & RIDE FACILITY

This drawing is produced using the
Irish Transverse Mercator (ITM)
Geographic Coordinate System

A1



LEGEND:

- Proposed Kerbline
- Proposed Kassel Kerb
- - - Proposed Linear Drainage
- Proposed Carriageway
- Proposed Concrete Bus Bay
- Proposed Footway
- Proposed Cycleway
- Proposed Grass Area
- Proposed Raised Table
- Proposed Carriageway Car Park
- Proposed Wildflower Landscaping
- Proposed Concrete Island
- Lands Made Available
- Proposed Public Lighting
- Proposed Uncontrolled Tactile Paving
- Proposed Corduroy Paving
- Existing Fencing to be retained
- Existing Fencing to be removed
- Proposed Fencing & Gate
- Proposed Bus Stop
- Proposed Bin
- Proposed CCTV
- Proposed E-Vehicle Parking
- Proposed E-Vehicle Charging Point
- Proposed Disabled Persons Parking Bay

Plan Layout
Scale 1:500

Rev	Description	TOB	MC	Date
P01	For Planning			12.10.20

Clifton Scannell Emerson Associates Limited
Consulting Engineers,
Seafort Lodge,
Castledawson Avenue,
Blackrock, Co. Dublin,
Ireland, A94 P768
T: +353 1 288 0006
F: +353 1 283 3466
E: info@csea.ie
W: www.csea.ie

Client: Comhairle Chontae na Mí
Meath County Council

Project: Navan Town Scheme - Navan 2030
N51 Park & Ride Facility
Part VIII - Public Display
Proposed Layout

Dwg. Title

Drawn By: TOB Checked By: MC Date: Oct 2020

Project Code	Originator	Zone/Phase	Level	Type	Role	Dwg. No.
18_090F	CSE	GEN	XX	DR	C	2201

S2	For Issue	1:250
Status Code	Suitability Description	Scale @ A1
P01	For Planning	18_090F
Revision	Project Status	CSEA Job No.

PART VIII - PUBLIC DISPLAY

N51 PARK & RIDE FACILITY

This drawing is produced using the Irish Transverse Mercator (ITM) Geographic Coordinate System

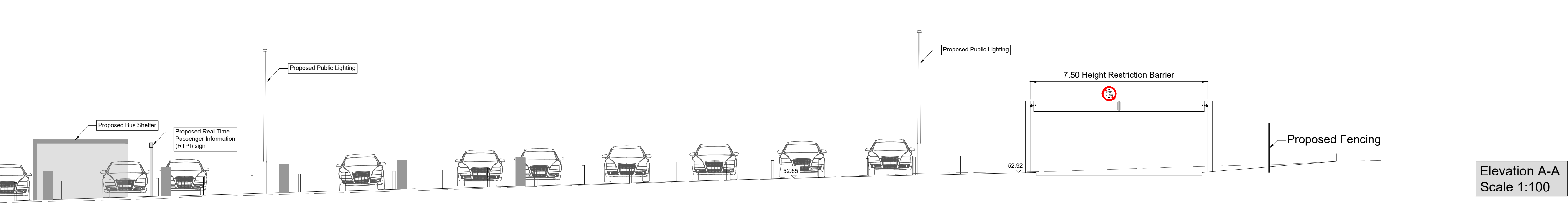
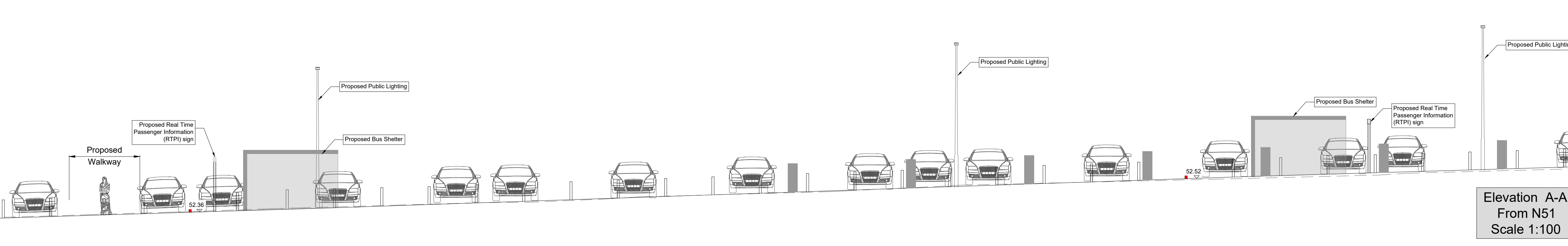
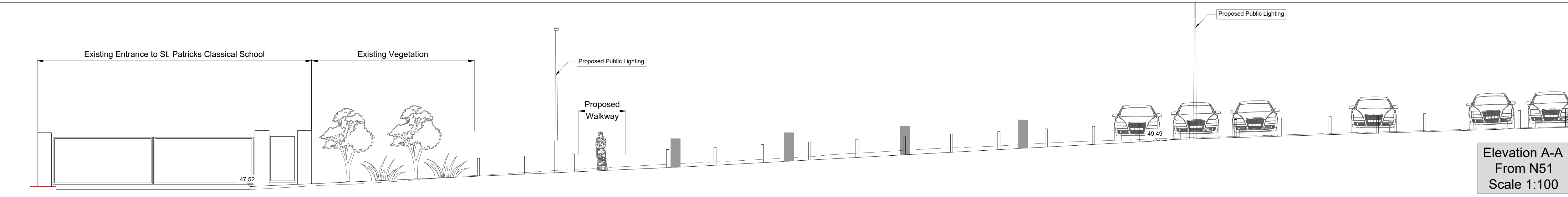
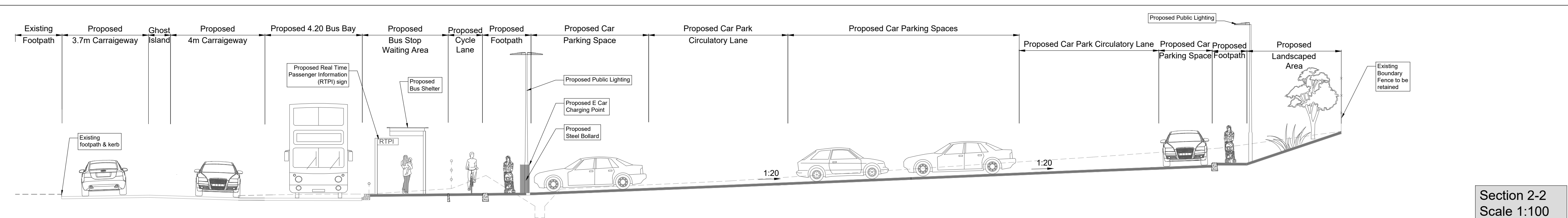
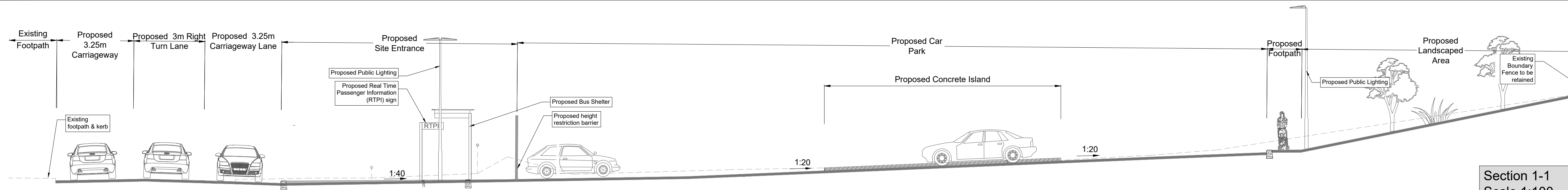
A1

Project Ireland 2040
Building Ireland's Future

NTA
Údarás Náisiúnta Iompair
National Transport Authority

A Smart Future
NAVAN
2030

comhairle chontae na mí
meath county council



NOTES:

For locations of Sections refer to Drawing no. 18_090F-CSE-GEN-XX-DR-C-2201

Rev	Description	TOB	MC	12.10.20
P01	FOR PLANNING			

Clifton Scannell Emerson Associates
Clifton Scannell Emerson Associates Limited
Consulting Engineers, Seafort Lodge, Castledawson Avenue, Blackrock, Co. Dublin, Ireland, A94 P768
T: +353 1 283 0006
F: +353 1 283 3466
E: info@csea.ie
W: www.csea.ie

Client: Comhairle Chontae na Mí Meath County Council
Project: Navan Town Scheme - Navan 2030 N51 Park & Ride Facility
Dwg. Title: Part VIII - Public Display Proposed Sections & Elevation

Drawn By	TOB	Checked By	MC	Date	Oct 2020
----------	-----	------------	----	------	----------

Project Code	Originator	Zone/Phase	Level	Type	Role	Dwg. No.
18-090F - CSE - GEN - XX - DR - C - 2202						

S2	For Issue	1:250
Status Code	Suitability Description	Scale @ A1
P01	For Planning	18_090F
Revision	Project Status	CSEA Job No.