

2022

ANNUAL BUDGET

for Year Ending 31 December 2022
Statutory Budget Meeting
29 November 2021



Contents

	Page
Chief Executive's Message	1-11
 Statutory Tables	
Table A – Calculation of Annual Rate of Valuation for the Financial Year	15
Table B – Expenditure and Income for 2022 and Estimated Outturn for 2021	
And Table F – Analysis of Expenditure and Income by Service Division	23 - 101
Table C – Calculation of Base year Adjustment for the Financial Year 2022	102
Table D – Analysis of Budget Income 2022 from Goods and Services	103
Table E – Analysis of Budget Income 2022 from Grants and Subsidies	104
Appendix 1 – Summary of Central Management Charges for Year 2022	105
Appendix 2 – Summary of Local Property Tax Allocation for Year 2022	106
Certificate of Adoption	107

CHIEF EXECUTIVE'S REPORT

1. INTRODUCTION

The preparation of Budget 2022 is taking place against the background of economic recovery, as the country continues to progress towards a more normal, pre-COVID, operating environment with all sectors of the economy operating at some level of capacity. Unfortunately, not all businesses survived the lockdowns and various restrictions but there are encouraging signs that most of the economy is performing strongly.

The impacts of the pandemic have also masked somewhat any fall-out from Brexit, nationally and at local level, with the on-going political debate on the Northern Ireland Protocol causing some concern for the potential implications for the Irish economy as a whole.

The continuation of the threat from COVID and a potential disrupted trading arrangements between the EU and the UK provide some uncertainty and potentially serious consequences nationally and for the future operating environment of Meath County Council. The Council has weathered, what must be hoped to be, the worst impacts of the pandemic in terms of both our income and expenditure. In this regard, due recognition must be given to Government for the range of supports it provided to businesses and the backstops they put in place to stabilise our income and to ensure our expenditure remained strong, with increased spending to deal with the consequences of the pandemic and ensure a continuity of service delivery.

Budget 2022 is the ninth that I have the pleasure, as Chief Executive, to present to the members of Meath County Council. In that time, the Council has undergone considerable change and has faced various challenges in the delivery of essential services in Meath. None greater than the challenge of the pandemic, but I am proud of how we as an organisation have responded, adapted and provided leadership at local and regional levels.

Evolution of Budget Expenditure 2014 - 2022

2014	2015	2016	2017	2018	2019	2020	2021	2022
97,284,572	97,858,967	100,939,369	104,642,530	110,753,400	123,941,815	139,092,906	154,685,723	162,310,332

Uncertainty is a constant and there are a number of variables not in our control. We have, therefore, had to make a number of assumptions in terms of: the evolving nature and containment of COVID; the virus' potential lasting impact on the local economy and particular sectors of the economy; the withdrawal of business supports and the possible negative impact on rates income locally; and continued uncertainty surrounding the implementation of the Northern Ireland Protocol.

In being statutorily required to produce a balanced budget, my key focus for Budget 2022 is to:

- Support business continuity and enhance our contingency capacity;
- Maintain our key service levels and enhance some essential services, where possible; and
- Support the local economy and maintain a sustainable and viable rate base, into 2022 and beyond.

Budget 2022 provides for expenditure of €162,310,332, an increase of €7.62m (or 4.9%) on last year's budget. Given the context, this is a very positive position and has been possible through a continued focus on maximising the use of resources at our disposal, strong budgetary management processes, and greater effort in securing higher levels of grant funding.

During the last nine years 2014-2022, in my time as Chief Executive, the annual Budget has increased by over 66%, which has brought enhanced service levels and provided additional human and financial resources in critical and emerging areas.

2. BUDGET PREPARATION

Budget 2022 has been prepared in the statutory format, in consultation with the Corporate Policy Group, for consideration by the Elected Members. The process of compiling the budget involves a number of key stages which include:

- A series of meetings with the Corporate Policy Group to consider Budget Strategy and the Local Property Tax variation;
- A public consultation process from July 1, 2021 to July 14, 2021 in relation to the variation of the Local Property Tax rate;
- The special meeting of the Council on August 30, 2021 to consider and decide on the variation of the Local Property Tax rate;
- The submission of a preliminary estimate of current and capital income and expenditure to the Department of the Housing, Local Government and Heritage by September 17, 2021, to comply with national budget and EU reporting requirements;
- Notification to the Revenue Commissioners and Department by September 30, 2021 of the decision of the Council in relation to the Local Property Tax rate;
- Agree overall General Municipal Allocations – the discretionary funding available at Municipal District (MD) level (six MD meetings held between November 10 -11, 2021);
- Detailed reviews of all aspects of the budget with Directors and Budget Holders, to develop the draft local authority budget.

The final stage in the budget process is consideration of the budget, as presented, by the Elected Members at the Annual Budget Meeting on November 29, 2021.

The Elected Members have a number of reserved functions in relation to the overall budget process as follows:

Local Property Tax - Members have the power to vary the Local Property Tax Rate (Local Adjustment Factor) by a factor of up to plus/minus 15%.

Adoption of Budget - Members may adopt the Budget with or without amendment and must approve the sums provided for transfer to the Capital account.

Determination of Rate - A separate motion in relation to the determination of the Annual Rate on Valuation (ARV) must be considered by the Members at the Budget Meeting.

Rates on Vacant Premises - In accordance with Section 31 of the Local Government Reform Act 2014, Members have the power to determine the proportion of rates refunds applicable on vacant commercial premises.

In preparing the budget each year, the Council takes account of the context within which it operates, identifies particular areas where increased investment is required, and puts in place a targeted programme to address these needs. It also considers the costs of doing business and the potential impacts that changes in the economy may have on future income. However, it should be noted that the significant majority of any local authority's budget is fixed and non-discretionary in nature.

3. CONTEXT – ECONOMIC OUTLOOK

While uncertainty remains high and the path ahead for the economy remains tied with the path of the virus, there is positive momentum and a broadly favourable international backdrop leading to various economic growth forecasts for 2022 being revised upwards.

The outlook for the national economy is positive as it rebounds from the effects of the public health restrictions with an expected sustained period of robust growth. It is expected that domestic economic activity will be back to pre-pandemic levels by the end of 2021 and broadly to where it would have been in the absence of the pandemic by end-2023.

GDP figures for 2021 highlight the difference between the export oriented and the domestic economy, with net exports of predominantly foreign-owned multinationals in pharmaceuticals and ICT sectors driving growth. This is likely to continue but strengthening world demand is also expected to lift domestic firms' exports. The continuing uncertainty associated with Brexit hangs over some sectors, such as agri-food, which are more exposed than others. GDP is projected to grow by 15.3% in 2021 as a whole, 7.2% in 2022 and 5.3% in 2023.

The prospects for domestic demand, the backbone of the county's economy, are good and forecast to grow by 5.5% in 2021 and by 7.1% in 2022, with economic conditions set to normalise thereafter. Household consumption will play a key role and forecast to grow by 8.3% in 2022 and 5.1% in 2023. The increase in demand, along with some supply bottlenecks and increases in energy prices will also generate price pressure in the economy but these are forecast to ease towards the latter half of next year. That said, there is a risk that product and labour supply constraints will persist, as demand will

remain relatively strong and the risk of inflation is therefore more pronounced than in recent times. The Council and the projects and services it delivers will not be immune to these influences and Budget 2022 has been prepared to anticipate these trends.

In terms of the labour market, the recovering economy is forecast to generate around 160,000 jobs up to 2023, reducing the unemployment rate to 5.9% on average by then (down from the peak of 22% in May 2020). Some sectors will take longer to recover to their pre-COVID levels of employment, leading to some persistence in the unemployment rate as workers either find work in other sectors or wait for their sector to regain full capacity. Migration is also forecast to take time to recover. The nature of work, with more flexible working arrangements being developed may also provide opportunities for our towns and villages, as well as, demands for enhanced local services.

Meath County Council's revenue budget and capital programme provide services and investment which aim to improve the county as a place in which to live, work, invest in and visit. It is also worth noting that the Council's spending brings an important stimulus impact to the local economy. The role that the Council plays in providing a stimulus to the local economy has been brought to the fore during the pandemic and the re-opening of the retail and hospitality sectors.

Meath is home to the third youngest population in the country and also one of the fastest growing. This places a considerable demand on the provision of essential services, which has not been sufficiently recognised by the allocation method for Government funding, although the level of Government funding received in recent years has increased.

As a Council, there is an onus to balance the needs of all stakeholders in the business and enterprise sector, residents and community groups, as well as, visitors to the county. This budget has been prepared with a focus on addressing the key challenges, balancing the various needs, understanding the constraints and delivering on the objectives of the Council's Corporate Plan. It is informed by key national policy frameworks and by the national and local economic context. The key aim is to ensure that Meath is best positioned to benefit from a rebounding economy with the potential to grow and prosper, to support economic development, avail of future investment, address the county's housing needs, foster sustainable and resilient communities and adapt to the impacts of a changing climate.

4. SOURCES OF FUNDING

Budget 2022 provides for expenditure of €162,310,332 to fund our services. The main sources of income available to fund this expenditure are set out here:

Income	2022	2021	2022 v 2021	% of Income
	€	€	€	%
Grants & Subsidies (Table E)	57,989,594	55,354,416	2,635,178	35.7%
Commercial Rates	47,442,808	44,238,898	3,203,910	29.2%
Goods and Services (Table D)	42,818,761	41,069,601	1,749,160	26.4%
Local Property Tax	14,059,169	14,022,808	36,361	8.7%
	162,310,332	154,685,723	7,624,609	100.0%

Grants and Subsidies

The Council has over previous years highlighted the legacy of low government grant funding to Meath. That said, 2022 will see very significant increases in grant funding to offset the cost of increased activity in areas such as housing and roads. For example, our expected housing grant in 2022 will be €27,251,481 which is an increase of over 613k on the previous year. Similarly the roads grant allocation continues to grow to €22,663,385 in 2022 (it was just over €13m in 2015).

The Council will continue to maximise its drawdown from national competitive grant funding streams, as it has done in recent years.

Goods and Services

The projected income from Goods and Services has increased from last year, with positive growth in income from housing rents, loans and recoupments. These growth areas will help off-set significant impacts on income from other revenue streams, such as parking charges and amenity charges, which will continue to be affected by any public health restrictions in 2022.

Budget 2022 has been prepared and balanced without any increase in commercial rates or local charges. This is the ninth consecutive budget that I have presented to Council during which time rent charges and commercial rates have not been increased, despite the rising costs of doing business, the increased demands on most of our services and the very significant challenge that the pandemic has presented in terms of the Council's revenue streams.

Local Property Tax

The Members resolved at their meeting on August 30, 2021 not to vary the basic rate of the Local Property Tax. This followed consideration of a statutory report covering:

- the financial position of Meath County Council;
- an estimate of the income the Council will receive and the expenditure it will incur in the period for which the varied rate is to have effect;
- the financial effect of a varied rate; and
- feedback from the public consultation held.

This decision has had a beneficial impact on the preparation of the 2022 Budget. As Meath County Council has not varied the basic rate of Local Property Tax for 2021, the budget has been prepared on the basis of €14,059,169 of Local Property Tax in the revenue account.

The benefits of the Council's decision to continue to retain the Local Property Tax at its current rate has enabled the Council to protect the financial provision in key service areas such as housing, roads, the environment and community.

Commercial Rates

Commercial Rates continues to be a significant contributor to the Council's budget. Ensuring that all commercial properties in the county are included on the rates records and are properly rated remains a focused objective of the Council, in order to apply the burden of commercial rates in an equitable manner to business owners across the county. That said, the focus for the Council has been determined by efforts to counteract the negative impacts of the COVID-19 and the resultant public health restrictions placed on society and business.

Government support has continued through 2021 with a revised commercial rates waiver scheme for Q1 to Q3 and a further targeted rates waiver for Q4 which was announced in the National Budget on October 12th. Through the rates waiver Meath County Council has supported over 2,000 businesses and waived rates to the value of €10m by the end of the year.

Businesses in Meath have also been supported through the Small Business Assistance Scheme for Covid (SBASC). The SBASC was introduced by the Government to give grants to businesses who were not eligible for the Government's COVID Restrictions Support Scheme (CRSS), the Fáilte Ireland Business Continuity grant or other direct sectoral grant schemes. This scheme aimed to help businesses with their fixed costs, for example, rent, utility bills, security. Between Phase 1 and 2 of the scheme Meath County Council processed 270 successful applications totalling €1,035,000.

The key objective of these measures is to maintain a sustainable rate base into 2022 and beyond.

In preparing this budget, there is a level of uncertainty in respect of commercial rates and the collection rates for 2022. While central government have been extremely supportive to businesses throughout 2020 and 2021 the uncertainty of how businesses will perform in 2022 is of concern. Much of this will depend on the overall performance of the economy and indeed the ongoing matter of Covid-19.

The following table provides an overview of the Rates calculation for 2022 as set out in the statutory budget tables.

Calculation of Rates 2022	
Effective Valuation 2022	244,802,930
Annual Rate on Valuation	€0.1938
Total Rates for 2022	€47,442,808

It is also worth noting that Meath County Council is one of the top two local authorities in the country for the collection of rates, with a 88% collection level (adjusted for 2020 waivers), up from 85% in 2015. This compares with an average across the 31 local authorities of an 76% collection rate. The Council will continue to liaise with rate payers and improve collection rates, where possible.

I am, as Chief Executive, recommending that there will be no change in the current 100% rate rebate policy and that Budget 2022 has been prepared on this basis. The rationale for this approach is that there is too much uncertainty as to the viability of a number of businesses sectors, plus the collection of any additional income from the owners of vacant properties would present particular challenges in a county not long after a Revaluation by the Valuations Office and dealing with the consequences of the pandemic.

The Business Support Scheme has proven to be very successful and will continue. It has now evolved into a measure to encourage and assist businesses throughout Meath with a particular emphasis on small business. In order to qualify, businesses are required to fully discharge their rates by a prescribed date in the due year.

5. BUDGET OBJECTIVES 2022

It is worth underlining that Meath County Council is an efficient local authority, in terms of the range and quality of the services it delivers with a very low, in fact the lowest, expenditure per capita of any local authority in the State.

Ideally, as Chief Executive, I would like to be in the position of make financial provision to meet the many and growing expectations of the elected members and citizens alike in terms of more and better services and enhanced delivery of a range of measures across the county and in all local communities. Unfortunately, this is not possible. The overall objectives of Budget 2022 are:

- to maintain service levels and make additional provision for some service areas;
- to support business continuity and enhance our contingency capacity; and
- to protect our rate base and support the resilience of the local economy.

Additional financial provision is targeted in order to respond to growing demands and identified need. In particular:

Housing – Maintenance Programmes and Strengthened Delivery

Responding to the national housing situation locally, by helping families and individuals to meet their housing needs remains a crucial challenge for Meath County Council. The Council was set a target of delivering 1,190 additional social housing units between 2018 and 2021, through a combination of construction, acquisition, leasing and through partnerships with Approved Housing Bodies working in the county.

The Council currently has a strong construction pipeline with the direct construction programme comprising 25 sites across the county, totalling 571 units. Delivery across all key capital mechanisms will see the delivery of 1,616 new build units for the period 2018-2021.

In excess of 1,100 households had their accommodation needs met by Meath County Council in 2021. The Council has improved the operation of many of its housing services and advanced a number of its strategic priorities for homeless services, affordability measures, vacant homes, traveller accommodation, applicants with a disability and tenant liaison. There will also be a strengthening of the delivery teams in 2022 to drive housing delivery in the context of 'Housing for All'.

An on-going challenge and something that will receive greater resources in 2022 is the maintenance of our social housing stock and estate management programme. The Council will implement a new preventative maintenance, as well as, the response maintenance programme totally €6.1m, an additional provision for maintenance of €1,006,785 on last year. These programmes will build on the learning from the 2021 programme in terms of energy efficiency works and other improvements.

Transportation – Winter Gritting, Footpath Improvements and Active Travel

Meath County Council manages and maintains over 3,500km of road, which includes the provision of routine and winter maintenance, surface dressing, public lighting, traffic management and safety and road improvements, including bridge works and footpath improvements.

The Council has achieved progress on a number of strategic national primary and secondary roads schemes in recent years and a number of major capital schemes will be further advanced in 2022. The Council will continue to realise efficiencies and maximise the resources at its disposal. A new provision has been made in Budget 2022 for footpaths and footpath repairs in the order of €600,000 which will enable the Council to continue with its risk mitigation programme, initially commenced in the Capital Programme.

Budget 2022 will facilitate an increase in the number of routes added to the Winter Gritting Plan. As well as additional financial provision, existing resources will be optimised. All national, secondary and regional routes are now included in the Winter Gritting Plan, which will see the Council gritting 22% of all roads in the county, above the national average of 18%, which involves an additional 155km of road on previous years. The Council has also identified auxiliary (third party) services that it can avail of for the more severe weather events, if required.

As part of the Government's five-year €1.8bn national plan, the Council is currently establishing an Active Travel team to progress plans for cycling, walking and public transport initiatives. This team will be fully operational by early 2022 and will progress these sustainable transport measures, as well as, additional cycle parking throughout the county and the Safe Routes to Schools Programme. The additional staff costs will be recouped from the National Transport Authority.

Community Infrastructure and Enhanced Support Post-Pandemic

The severe impact that the COVID-19 pandemic has had on local communities and community development places some obligation on the Council to respond to the high level of demand from community groups across the county.

Budget 2022 responds to that need by re-instating the Members' Discretionary Fund to €600,000, with some additional increases for Community Grants, in excess of €200,000 across various initiatives. The Council will also continue to maximise its drawdown for national funding programmes to support community development and provide for local community infrastructure.

The Libraries Service and the branch network play a crucial role and provide a range of essential services in our communities. In the coming years, the branch network will expand with the opening of the Bettystown Library and the up-grade of other branches. Budget 2022 provides an additional €350,000 for more books, publications, other materials and additional human resources.

Climate Action – Focusing on our Energy Performance

As part of its commitment to Climate Action and in order to meet its energy usage reduction targets, the Council will have a renewed focus on its energy consumption and improving its energy efficiency in 2022. An additional €100,000 is being made available in Budget 2022 to assist in the establishment of a regional energy bureau, which will be shared with Kildare and Wicklow County Councils. Part of the energy bureau's role will be to provide energy management services to the Council to help it meet its energy targets.

Allied to this, a further €100,000 is being provided for a new energy assessment of all Council buildings and facilities, which will provide essential baseline data to assist in accessing SEAI grant funding for future works to improve our energy performance.

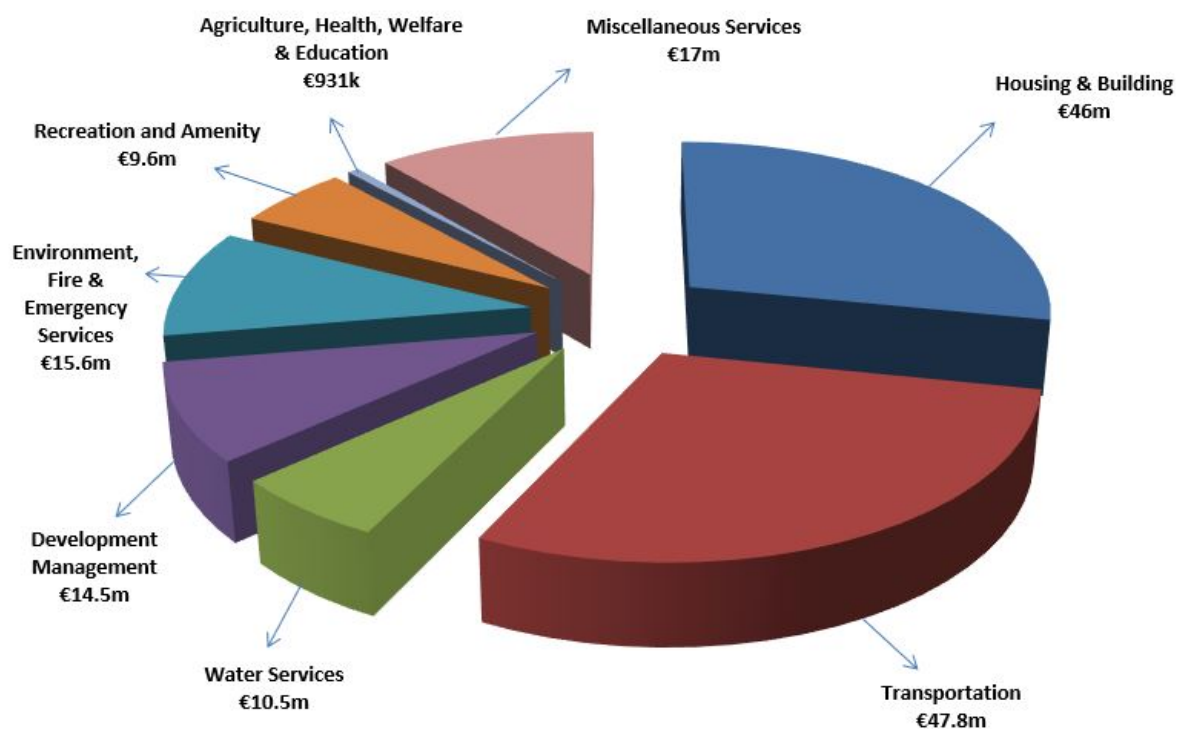
Investing in Our People - Other Service Enhancements

The Council will continue to support the elected members in fulfilling their reserved roles and will facilitate the range of statutory and other meetings throughout the year. Budget 2022 takes accounts of the pay and non-pay recommendations from the Moorhead Report on the Role and Remuneration of Local Authority Elected Members. Provision has been made for pay increases, in line with national agreements, the new scheme for Elected Members vouched expenses and non-pay elements such as the creation of a Members Portal for submitting and tracking Members Representations, as part of an up-graded CRM system.

A couple of other notable service enhancements will be in our excellent Fire and Rescue Service and Planning Department. The Council’s Fire and Rescue Service has one of the lowest per capita operating budgets in the country and its budget allocation is being increased to recruit an additional Assistance Chief Fire Officer to support service provision. Similarly, additional resources will be provided for the Planning Department, specifically to manage increased planning case workloads and to support the delivery of the new Large-Scale Residential Development (LSRD) system, which places increased responsibility on the Planning Authority.

Our ability as an organisation to provide the services our citizens require, and also the way in which our citizens interact with us, is increasingly reliant on technology. Our Information Systems Department has enabled our Elected Members and workforce to work in new and very different ways during the pandemic and these models of working will continue to be supported, where necessary. We will also continue to deliver business improvements, including security upgrades, enhanced data analysis capacity and better online customer support in 2022.

As a public body, there is an obligation on us to engage, inform and communicate with all stakeholders. Again, our capacity to do so was tested in recent times and we have developed new and more engaging means of informing our citizens and engaging with them more directly using video, social and traditional media. We will continue to seek improvements in our communications roles in 2022.



6. ACKNOWLEDGEMENTS

In conclusion, I wish to thank the Cathaoirleach Cllr. Sean Drew and his predecessor Cllr. David Gilroy and the Councillors of Meath County Council for their contribution and support over the past financial year. I look forward to continuing to work in partnership with the Elected Members on the delivery of a high quality public service for the people of Meath and developing the resilience of the county and all its communities, as we rebound further from the pandemic in 2022.

I would like to pay tribute to all the staff for their commitment and enthusiasm in the delivery of these services across the county. 2021 has been a second consecutive very challenging year but as an organisation we have responded, adapted and are emerging as a stronger, more agile, organisation as a result.

The preparation of the Budget is a difficult and demanding task at the best of times, but during the current period of great uncertainties, it has proven to be a challenge again this year. It is co-ordinated by the Finance Team and involves all Departments. In this regard, I would like to thank all staff involved in the Budget process but in particular the Management Team for their on-going cooperation, with a special acknowledgement of Ms. Fiona Lawless, Head of Finance, and to Ms. Sheila Harkin and her colleagues for their tremendous work in relation to the detailed preparation of this Budget.

Finally, I formally recommend Budget 2022 as presented to the Council for adoption.

Jackie Maguire,

A handwritten signature in black ink that reads "Jackie Maguire". The signature is written in a cursive style with a small flourish at the end.

Chief Executive

Budget 2022

Expenditure €162m

Housing €46m

Maintenance & Improvements of LA Housing Units, RAS & Leasing, Housing Loans & Housing Grants



Transportation



Road Maintenance & Improvements, Public Lighting, Car Parking and Road Safety.

€47.8m

Development Mgt. €14.5m



Planning, Community, Economic Development & Tourism

Water Services €10.5m



Recreation & Amenity €9.6m



Miscellaneous Service €17m

Customer and Corporate Services, Communications, Events, Facilities, Health and Safety.

Environmental Services €15.6m



Agriculture & Welfare €931k



TABLE A - CALCULATION OF ANNUAL RATE ON VALUATION FOR THE FINANCIAL YEAR

Summary by Service Division	Expenditure €	Income €	Budget Net Expenditure 2022 €	%	Estimated Net Expenditure Outturn 2021 €	%
Gross Revenue Expenditure & Income						
A Housing and Building	46,076,503	47,096,437	(1,019,934)	(1.7%)	(267,286)	(0.5%)
B Road Transport & Safety	47,871,290	27,136,534	20,734,756	33.7%	18,934,049	32.5%
C Water Services	10,503,469	9,342,762	1,160,707	1.9%	964,175	1.7%
D Development Management	14,503,964	5,995,184	8,508,780	13.8%	7,320,775	12.6%
E Environmental Services	15,605,204	3,595,790	12,009,414	19.5%	11,051,729	19.0%
F Recreation and Amenity	9,632,605	542,685	9,089,920	14.8%	8,237,430	14.1%
G Agriculture, Education, Health & Welfare	931,526	506,400	425,126	0.7%	419,559	0.7%
H Miscellaneous Services	17,185,771	6,592,563	10,593,208	17.2%	11,600,247	19.9%
	162,310,332	100,808,355	61,501,977	100.0%	58,260,678	100.0%
Provision for Debit Balance	-	-	-			
ADJUSTED GROSS EXPENDITURE AND INCOME	(A)	100,808,355	61,501,977		58,260,678	
Financed by Other Income/Credit Balances						
Provision for Credit Balance		-	-			
Local Property Tax		14,059,169	14,059,169			
SUB-TOTAL	(B)		14,059,169			
AMOUNT OF RATES TO BE LEVIED	(A)-(B)		47,442,808			
Value of Base Year Adjustment			-			
AMOUNT OF RATES TO BE LEVIED (GROSS OF BYA)	(D)		47,442,808			
Net Effective Valuation	(E)		244,802,930			
GENERAL ANNUAL RATE ON VALUATION	(D)/(E)		0.1938			

Service Division A

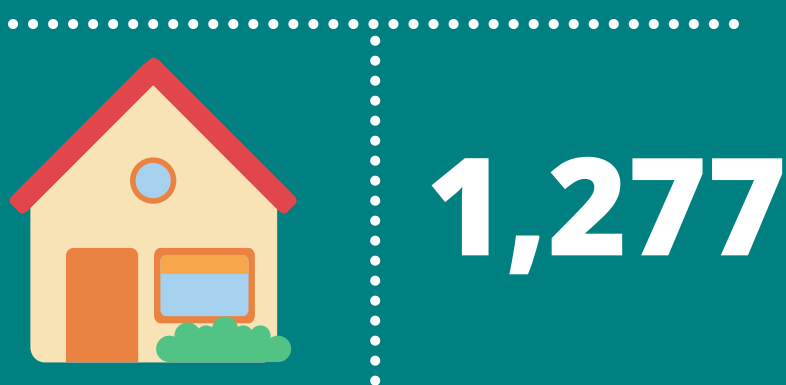
Housing & Building - Delivery in 2021

€20,312,241
(84 units)

Total funding approved in 2021 regarding capital projects.



Rebuilding Ireland target for new builds 2018 - 2021 was 797 units. A total of 1,277 new build units were built over the 4 year period, averaging 306 new builds per annum.



Approval granted to 531 housing grant applications, to a combined value of



€3,620,355



1,100

Number of households who will have their accommodation needs met in 2021.



379 Total number of households who have required emergency accommodation placement to date in 2021.



comhairle chontae na mí
meath county council

SERVICE DIVISION A

Housing & Building

Achievements in 2021

Housing Capital

Direct construction programme for the period 2017-2021 comprises 25 sites throughout the County, totally 571 units (€141,232,791). A total of 189 units across 12 sites have been completed to date, with 26 units due to be delivered by the end of 2021 at Lagore Road, Dunshaughlin.



Meath County Council Site under construction – Lagore Road, Dunshaughlin (€5.8m)

Meath County Council's Rebuilding Ireland delivery target for new build for the period 2018 – 2021 was 797 units, with delivery across the key capital mechanisms, including direct construction, Part V and Approved Housing Body activity. This new build target has been exceeded by Meath County Council, with the delivery of 1,227 new build units during the period concerned, averaging 306 new build units delivered per annum. When all delivery mechanisms are accounted for (inclusive of acquisitions and leasing), Meath County Council has delivered 1,616 new social units over the four-year period.

Funding approval was received from the Department of Housing, Local Government & Heritage in respect to a number of capital project submissions made during the year, including direct construction, Part V, turnkey acquisitions and regeneration projects. Total funding approved to date in 2021 regarding capital projects totals €20,312,241 (82 units), representing future pipeline delivery.

Collaborative work with Approved Housing Bodies has yielded significant delivery during 2021 (160 units), with a further 378 units granted approval, with expected delivery in 2022.

Four sites were acquired for the purposes of direct social housing delivery by Meath County Council (combined expenditure €3,955,000).

Refurbishment works were carried out on 74 casual vacancies to date in 2021, with a total expenditure of €1,702,000.

Works on 60 units under the Local Authority Adaptation Works Scheme will be completed by year end (€443,248).

Thirty units are being subject to deep retrofit works under the Energy Efficiency/Retrofitting Programme 2021. This programme aims to bring the energy rating of social housing stock to B2/Cost Optimal standard, on an average cost of €27,000 per unit.

Works commenced in August on the refurbishment of Alverno Court, Laytown (€4,150,329). The project will be completed across five phases, with full completion expected by Q1, 2023.



Refurbishment works commence in Alverno Court, Laytown

Affordability Measures

The remaining three cost reduced units in Broadmeadowvale, Ratoath were disposed of in 2021, thereby realising the full affordability dividend associated with the first phase of the Ratoath LIHAF project (10 units). A further 10 units will be made available in the second phase of the project.

Nine low cost private sites as incorporated in the current phase of Lagore Lawns, Dunshaughlin, were allocated during 2021, following the receipt of 51 eligible applications, representing a further affordability measure undertaken directly by Meath County Council.



Cost Reduced LIHAF units, Ratoath

Housing Grants

Approval has been granted to 531 housing grant applications to date under the following schemes: Housing Adaptation Grant for People with a Disability and Housing Aid for Older People and Mobility Aid Grants, to a combined value of €3,620,355.

Housing Allocations

In excess of 1,100 households will have their accommodation needs met by Meath County Council in 2021, through various housing supports, including Housing Assistance Payment, the Rental

Accommodation Scheme, Approved Housing Bodies, as well as through direct allocations by Meath County Council.

An amended Allocation Scheme was adopted by Meath County Council in October, making provision for enhanced usage of Choice Based Letting (CBL) through an online system, and the promotion of the rightsizing agenda, both within our own stock and private ownership (Private Rightsizing Financial Contribution Scheme).

Tenant Liaison

In excess of 236 tenants completed pre-tenancy training during 2021, obtaining a variety of information concerning their tenancy with Meath County Council.

A new Meath County Council Tenant Handbook has been developed and published, representing an important resource for all new tenants regarding their tenancy with Meath County Council.



Meath County Council Tenant Handbook

Over 550 anti-social behaviour cases have been investigated by the Tenant Liaison team to date in 2021.

A draft Estate Management Policy has been devised in order to provide an overall framework to promote and achieve better estate management and outcomes within Meath County Council's own estates. It is intended that this draft policy will be adopted by full Council by year end. A pilot Estate Management Initiative was completed in Tailteann, Navan during 2021, in the main comprising of public realm upgrade works within a targeted area of the estate. The learning from this pilot will inform the 2022 Estate Management work programme.



Pilot Estate Management Initiative (Before & After)



Pilot Estate Management Initiative (Before & After)

Homeless Service

As part of the Mid-East Homeless Region, Meath County Council adopted the Mid-East Homeless Strategy 2021-2023. The continued strategic development of homeless services in the county is outlined in the Strategy, with a focus on homeless prevention, provision of emergency accommodation, health & welfare supports and multi-agency approach – all advanced within the context of our statutory Public Sector Duty

Some 379 households have required an emergency accommodation placement to date in 2021.

Significant Progress has been made during 2021 with the continued roll out of Housing First in the County, with 18 Housing First tenancies to be in place by year end.



The Homeless HAP Placefinder Service has supported 107 tenancies to date.

Meath County Council's Isolation Plan, in response to Covid-19, and the designation of homeless persons and members of the Traveller Community as vulnerable persons, continued to be operational during 2021. A number of units within stock remain set aside, and fully furnished, for the purposes of isolation, as and when the need arises. In addition, four units continued to be leased to Meath Women's Refuge in order to allow its services to victims of domestic violence continue unaffected, outside of their traditional communal refuge setting.

Traveller Accommodation

The proposed refurbishment of St Francis' Park halting site was successfully brought through the Part 8 planning process in 2021, with tendering competition for works to be published before year end, with activity on site to commence in quarter 2 of 2022.



St Francis Park Refurbishment – New Site Layout

The annual target for allocations to Traveller households, as contained in the Traveller Accommodation Programme 2019-2024, was exceeded, with 37 allocations recorded (the target was 9).

Refurbishment works on 13 bays on St Patrick’s Park halting site, Navan were completed, to a value of €130,738.

A funding submission has been made to the Traveller Accommodation Unit for the provision of a six-unit Traveller specific Group Housing Scheme in Navan (€1,593,710).



Upgrade Works St Patrick's Park Halting Site, Navan

Disability

Meath County Council’s ‘Strategy for Housing People with a Disability 2021-2026’ was developed in 2021, under the auspices of the Housing Disability Steering Group. Actions have been identified under the headings of Housing Supply, Health & Care Services, Collaboration, Housing Pathway, Participation & Awareness.

A total of 56 applicants with a disability had their accommodation needs fulfilled to date in 2021, with 41 new applicants with a disability qualifying for social housing support.

The Carrick Street, Kells, refurbishment project has been selected, by the Department of Housing, Local Government & Heritage as a pilot capital project in respect of incorporating Universal Design principles within 30% of the proposed units, with a view to informing national policy on the matter.

A total of 26 level access units were delivered across 4 sites in 2021, in order to cater for applicants with mobility issues. These units emanated from Part V delivery negotiated by Meath County Council and Approved Housing Body activity.



Level access units delivered through Part V (Dunshaughlin & Drogheda)

Rented Minimum Standards

Covid-19 restrictions severely impacted the extent of private rented dwellings inspected by Meath County Council during 2021, with 270 inspections conducted to date.

Vacant Homes

Meath County Council's Vacant Homes Action Plan continues to advance across its various strands including: (i) the continuous review of vacant privately-owned units, that may be of interest to Meath County Council, in its capacity as a Housing Authority; (ii) Buy & Renew acquisitions; (iii) derelict unit site opportunities; and (iv) the use of Compulsory Purchase Orders, where deemed necessary.

To date in 2021, 60 privately owned properties were identified as potentially vacant, with property owners identified and contact made regarding the status of same. Forty-eight owners are currently engaging with the Vacant Homes Officer.

The Compulsory Purchase Order process was completed on one property (Trim), with refurbishment works currently ongoing. The process has commenced on a further property (Laytown), with an additional 4 vacant properties under consideration for compulsory purchase.



CPO property, Trim (front & rear)

Five properties have been acquired to date under the Buy & Renew acquisition scheme.

Vacant/derelict sites across the County continue to be advanced as direct social housing schemes including Carrick Street regeneration (Kells), Swan Lane (Navan), Brews Hill (Navan), Pitcher Lane (Kells) and Haggard Street (Trim). The combined yield from these sites will be 61 units, with the opportunity to progress the respective agendas of age friendly, disability and rightsizing being availed off on a number of these sites.

Initiatives and Challenges for 2022

Provision has been made in the 2022 Housing Budget for the following:

- Funding of grants under the Housing Grant Scheme to a value of €2.7m;
- Response and Preventative Maintenance programmes of €6.1m;
- Increased delivery by the Approved Housing Body sector in terms of new social units and related Payment and Availability Agreements;
- Strengthened delivery teams to drive housing delivery in the context of Housing for All (€393,000);
- Estate Management Initiatives.

The fulfilment of the ambition of Housing for All at local level will be a key focus for the Housing Department from 2022 onwards, as it continues to address the demand for social housing support in the County.

2022 will represent Year 1 of the Housing for All Housing Delivery Action Plan, in collaboration with all key stakeholders. In this context, the progression of all current major capital projects will be a key priority including the development of further pipeline projects, land acquisition, and advancement of our Vacant Homes Action Plan and related regeneration projects.

Attention will also be placed on progressing the implementation of affordability measures, as contained in Housing for All, where applicable to Meath.

The energy retrofit programme within our own stock will continue in 2022, building on the learning from this new Climate Change initiative introduced in 2021. An enhanced programme is envisaged in 2022, to ramp up, what will be an annual rolling programme.

It is intended to continue the strategic development of homeless services in 2022, with a particular focus on accelerated delivery of Housing First tenancies, and the development of high support emergency accommodation provision in the County, signifying a dual approach in further catering for the needs of long term cyclical homeless clients.

Applicants with a disability will remain a priority in 2022, with the objective to ensure that 10% of all new social housing units are fully accessible, and that 10% of all housing supports provided in 2022 are to applicants with a disability. The establishment of a Housing Disability Team will further strengthened cross agency collaboration in the forward planning process for applicants with a

disability. All these actions are in implementation of the commitments in Meath County Council's Housing Persons with a Disability Strategy 2021-2026.

TABLE B: Expenditure and Income for 2022 and Estimated Outturn for 2021									
Division & Services	2022					2021			
	Expenditure		Income		Estimated by Chief Executive €	Expenditure		Income	
	Adopted by Council €	Estimated by Chief Executive €	Adopted by Council €	Estimated by Chief Executive €		Adopted by Council €	Estimated Outturn €	Adopted by Council €	Estimated Outturn €
A Housing and Building									
A01 Maintenance & Improvement of LA Housing Units	7,609,835	7,609,835	2,212,176	2,212,176	6,500,670	6,518,182	2,223,949	2,223,949	2,223,949
A02 Housing Assessment, Allocation and Transfer	64,888	64,888	-	-	28,128	28,131	-	-	-
A03 Housing Rent and Tenant Purchase Administration	1,237,831	1,237,831	12,344,813	12,344,813	1,219,931	1,220,154	11,352,939	11,424,501	11,424,501
A04 Housing Community Development Support	451,688	451,688	197,623	197,623	448,490	448,763	197,235	197,235	197,235
A05 Administration of Homeless Service	3,720,552	3,720,552	3,640,479	3,640,479	3,192,010	3,592,328	2,460,159	2,820,159	2,820,159
A06 Support to Housing Capital Prog.	3,516,754	3,516,754	1,062,236	1,062,236	2,927,871	2,929,800	677,129	677,129	677,129
A07 RAS and Leasing Programme	23,554,715	23,554,715	23,677,212	23,677,212	23,514,960	23,515,057	23,530,439	23,530,439	23,530,439
A08 Housing Loans	2,989,517	2,989,517	1,431,251	1,431,251	2,886,319	2,783,326	1,233,813	1,152,680	1,152,680
A09 Housing Grants	2,704,630	2,704,630	2,450,100	2,450,100	2,524,538	2,724,573	2,016,095	2,120,095	2,120,095
A11 Agency & Recoupable Services	858	858	-	-	851	858	-	-	-
A12 HAP Programme	225,235	225,235	80,547	80,547	212,930	212,993	95,264	95,264	95,264
Division A Total	46,076,503	46,076,503	47,096,437	47,096,437	43,456,698	43,974,165	43,787,022	44,241,451	44,241,451

Table F - Expenditure

Division A - Housing and Building

Expenditure by Service and Sub-Service	2022		2021	
	Adopted by Council €	Estimated by Chief Executive €	Adopted by Council €	Estimated Outturn €
A0101 Maintenance of LA Housing Units	6,118,785	6,118,785	5,112,000	5,112,000
A0102 Maintenance of Traveller Accommodation Units	272,448	272,448	271,134	271,134
A0103 Traveller Accommodation Management	61,700	61,700	61,700	61,700
A0104 Estate Maintenance	50,000	50,000	50,000	50,000
A0199 Service Support Costs	1,106,902	1,106,902	1,005,836	1,023,348
A01 Maintenance & Improvement of LA Housing Units	7,609,835	7,609,835	6,500,670	6,518,182
A0201 Assessment of Housing Needs, Allocs. & Trans.	64,520	64,520	27,763	27,763
A0299 Service Support Costs	368	368	365	368
A02 Housing Assessment, Allocation and Transfer	64,888	64,888	28,128	28,131
A0301 Debt Management & Rent Assessment	1,026,659	1,026,659	1,021,470	1,021,470
A0399 Service Support Costs	211,172	211,172	198,461	198,684
A03 Housing Rent and Tenant Purchase Administration	1,237,831	1,237,831	1,219,931	1,220,154
A0401 Housing Estate Management	-	-	-	-
A0402 Tenancy Management	174,335	174,335	178,324	178,324
A0403 Social and Community Housing Service	190,000	190,000	190,000	190,000
A0499 Service Support Costs	87,353	87,353	80,166	80,439
A04 Housing Community Development Support	451,688	451,688	448,490	448,763
A0501 Homeless Grants Other Bodies	-	-	-	-
A0502 Homeless Service	3,641,796	3,641,796	3,118,849	3,518,849
A0599 Service Support Costs	78,756	78,756	73,161	73,479
A05 Administration of Homeless Service	3,720,552	3,720,552	3,192,010	3,592,328
A0601 Technical and Administrative Support	2,740,296	2,740,296	2,194,270	2,194,270
A0602 Loan Charges	123,485	123,485	134,253	134,253
A0699 Service Support Costs	652,973	652,973	599,348	601,277
A06 Support to Housing Capital Prog.	3,516,754	3,516,754	2,927,871	2,929,800
A0701 RAS Operations	4,458,671	4,458,671	4,442,688	4,442,688
A0702 Long Term Leasing	3,174,540	3,174,540	3,151,814	3,151,814
A0703 Payment & Availability	15,909,922	15,909,922	15,908,975	15,908,975
A0704 Affordable Leases	-	-	-	-
A0799 Service Support Costs	11,582	11,582	11,483	11,580
A07 RAS and Leasing Programme	23,554,715	23,554,715	23,514,960	23,515,057
A0801 Loan Interest and Other Charges	2,445,959	2,445,959	2,400,912	2,281,862
A0802 Debt Management Housing Loans	127,066	127,066	106,187	106,187
A0899 Service Support Costs	416,492	416,492	379,220	395,277
A08 Housing Loans	2,989,517	2,989,517	2,886,319	2,783,326

Table F - Expenditure

Division A - Housing and Building

Expenditure by Service and Sub-Service	2022		2021	
	Adopted by Council €	Estimated by Chief Executive €	Adopted by Council €	Estimated Outturn €
A0901 Housing Adaptation Scheme Grant	-	-	-	-
A0902 Loan Charges DPG/ERG	-	-	-	-
A0903 Essential Repair Grants	-	-	-	-
A0904 Other Housing Grant Payments	-	-	-	-
A0905 Mobility Aids Housing Grants	2,700,000	2,700,000	2,520,000	2,720,000
A0999 Service Support Costs	4,630	4,630	4,538	4,573
A09 Housing Grants	2,704,630	2,704,630	2,524,538	2,724,573
A1101 Agency & Recoupable Service	-	-	-	-
A1199 Service Support Costs	858	858	851	858
A11 Agency & Recoupable Services	858	858	851	858
A1201 HAP	180,329	180,329	173,467	173,467
A1202 HAP Agency Services	-	-	-	-
A1299 HAP Service Support Costs	44,906	44,906	39,463	39,526
A12 HAP Programme	225,235	225,235	212,930	212,993
Division A Total	46,076,503	46,076,503	43,456,698	43,974,165

Table F - Income

Division A - Housing and Building				
Income by Source	2022		2021	
	Adopted by Council €	Estimated by Chief Executive €	Adopted by Council €	Estimated Outturn €
Government Grants & Subsidies				
Housing, Local Government & Heritage	27,251,481	27,251,481	26,639,168	26,743,168
Other	-	-	-	-
Total Government Grants & Subsidies	27,251,481	27,251,481	26,639,168	26,743,168
Goods & Services				
Rents from Houses	12,876,293	12,876,293	11,950,537	12,061,187
Housing Loans Interest & Charges	1,501,648	1,501,648	1,300,277	1,184,032
Superannuation	158,206	158,206	150,140	150,140
Agency Services & Repayable Works	-	-	-	-
Local Authority Contributions	2,438,000	2,438,000	1,988,000	2,348,000
Other income	2,870,809	2,870,809	1,758,900	1,754,924
Total Goods & Services	19,844,956	19,844,956	17,147,854	17,498,283
Division A Total	47,096,437	47,096,437	43,787,022	44,241,451

Service Division B

Transportation - Delivery in 2021



€44.45m

Road Improvement achievements included the delivery of circa €44.45m road works programme.

Boyne Valley to Lakelands County Greenway

Construction work on the Navan to Wilkinstown Section along the rail line commenced in Q4, 2021



25

 Parklets installed for outdoor dining.

Tara Road

R150 Laytown to Bettystown Spine Road

Construction complete and officially opened in September, 2021.

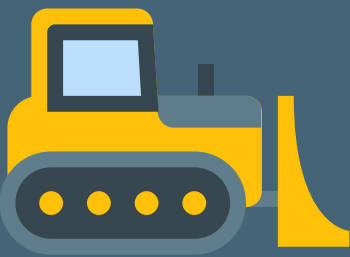


Road Restoration

Regional Roads - 14.5km | Local Roads - 65.8km

Surface Dressing

Regional Roads - 22.2km | Local Roads - 100.1km



comhairle chontae na mí
meath county council

SERVICE DIVISION B

Transportation

Achievements in 2021

Road Improvements

Road Improvement achievements included the delivery of the circa €44.45m road works programme. This was delivered against the backdrop of the continuing COVID pandemic.

On top of this, twelve Community Involvement Schemes (majority of funding from the Department of Transport) and twenty Local Improvement Schemes (grant funding from the Department of Rural and Community Development) were undertaken in 2021. These schemes showcase how partnership between the Council and communities can deliver meaningful improvements on roads, which otherwise would not receive maintenance/improvement funding.



Summary of Progress on Schemes in 2021

The following National Primary and Secondary Road Schemes were advanced in 2021:

- N2 Slane Bypass and Public Realm improvements – Consultants progressing Phase 3 design. Topographical survey complete, results being analysed and Utility Survey progressing in Slane Village. The Scheme has been amended significantly to include public realm improvements.
- N51 Dunmoe Phase 2 - The main construction contract commenced on 26th July 2021, with a projected construction period of 18 months, works are progressing well.
- N52 Grange to Clontail Road scheme – Awaiting approval from the TII to commence Stage 4 Statutory Processes. CPO documentation being drafted in the meantime.
- N2 Rath Roundabout to Kilmoon – Analysis of submissions received following PC3 on the emerging preferred option is on-going and will be contained in the Public Consultation Report, due by the end of 2021.
- National Road Pavement Schemes – Maintenance/Resurfacing schemes carried out at N2 Cushinstown, N52 Mandistown, N52 Marvellstown, N51 Halltown. A scheme is also underway on the N52 Higginstown to Crowinstown (in conjunction with Westmeath County Council).
- Meath County Council is liaising with Cavan County Council in relation to progressing the N3 Virginia By-Pass project, which had its third public consultation in August/September 2021.

Non-National road network maintained in 2021:

Road Restoration

- Regional Roads – 14.5km and Local Roads – 65.88km (including 8.58kms for CIS)
- 8.8kms of roads were completed under the Local Improvement Scheme

Surface Dressing

- Regional Roads – 22.23kms and Local Roads - 100.1 kms

Meath County Council was also allocated €395,000 of funding from the Department of Transport in 2021 for works on former National Roads. Resurfacing of 1.3km has been completed on the R148 Enfield, under this heading.

Additional Non-National Schemes progressed in 2021:

- R150 Laytown to Bettystown Spine Road – Construction is complete and the road was officially opened in September 2021, it has been officially named “Tara Road”.
- LDR4 Abbeyland Navan - Formal applications for EIS and CPO lodged with An Bord Pleanála and approval granted in July 2021. The CPO, as confirmed with modifications, was placed on display in September 2021 and it is intended to proceed to the next stages of the CPO process over the coming months.
- LIHAF - LDR6 Navan R153 to Farganstown and Ballymacon – Construction works complete.
- LIHAF - Ratoath Outer Relief Road Phase 1 - Construction works complete
- LDR1b – Work to review the Part 8 planning and preliminary design & CPO documents ongoing
- R162 Kilberry- Construction works on Phase 1 completed in April 2021. Works ongoing on Phase 2 which is being split into 2 contracts – First contract awarded for linking Phase 1 footpaths at R162/R163 and should be completed by end of 2021.
- Milltown Road Scheme – Construction works complete
- Bracetown Link Road - Consultants continuing to progress the finalise design and Part 8 documentation.
- Clonmaggaden Lane – preliminary Geometric and Drainage designs complete
- Work has commenced on the Drogheda Local Transport Plan as part of the Joint Urban Area Plan for Drogheda
- Boyne Valley to Lakelands County Greenway – Construction work on the Navan to Wilkinstown Section along the rail line commenced in Q4, 2021. TII approval is being sought for the bridge over the N52 and the tender for the construction contract between Castletown and Nobber will issue before end of 2021 for construction in 2022.
- Athboy Town Centre Project - Emerging preferred Option identified. Ground Investigation, services identification, design and environmental reports being finalised. Part 8 expected in early 2022



Bridge Remedial Works progressed in 2021:

Remedial Works have been funded on Clavens Bridge, Julianstown Bridge, Gibber Bridge, Breakey Bridge and Ashfield Bridge. Works carried out on Kilmainhamwood retaining wall and Donaghmore embankment; and repair works to Johnstown culvert also undertaken.

Safety Improvement Works progressed in 2021:

Safety Improvement Works have been funded at the following locations; R147 Newgate and Liscarton junctions; L-1006-0 Cabinhill; L-3409-18/L-7414-12 Donaghatrick and L-4020/L-80142-47/L-2226-0 Clonguiffin Longwood.

Safety Scheme being designed for R-156 / L-62161 Kilmore, Moynalvey.

Jobs Stimulus Packages

In the latter half of 2020, Meath County Council was successful in securing funding under two Job Stimulus Packages implemented by the Government.

The first was managed through the National Transport Authority to support local authorities' response to Covid-19 challenges and assist with their work to equip local communities and businesses with improved walking and cycling infrastructure. The majority of the 38 successful schemes that received an allocation under this heading last year have now been completed. This included the completion of a circa €1.2m project at the R154 Kiltale.

The second stimulus package, managed through Department of Transport (DoT), was for measures to address Climate Adaptation and Resilience works on the network. A further allocation was received in 2021 of €595,000, and six more schemes were progressed under this heading.



Another new stream of funding this year saw businesses applying for the Outdoor Dining Grant. This resulted in the Transportation Department processing 41 applications for Section 254 licences to allow businesses place furniture on the public footpath outside their premises during Covid Restrictions. In conjunction with the Outdoor Dining Grant, the National Transport Authority funded the installation of infrastructure for 25 Parklets at various locations throughout the county.

Sustainable Transport Schemes progressed in 2021:

- Boyneside Trail – Planning application submitted to An Bord Pleanála in July 2020, further information requested, decision will not be made until 2022.
- Boyne Greenway – Oldbridge to Navan – Non-Statutory Public Consultation held in Quarter 1 2021 for the circa 26.5km walking and cycling greenway, assessment of routes to identify emerging preferred route on-going.

- Navan 2030 – Phase 2 construction substantially complete. Detailed design and preparation for Tender process for Phase 3 ongoing which includes works on Kennedy Road/Kennedy Plaza, Market Square/Trimgate Street/ Kennedy Road junction and Abbey Road (Taxi Rank).
- Installation of Bus Shelters – NTA funding secured for Bus Shelter enabling works and Accessible bus stops – design works complete and tender process ongoing.
- Laytown Park & Ride Facility – Works substantially complete
- Athlumney to Trim Road Cycle and Pedestrian Scheme – CCTV drainage survey complete, slit trenching works carried out, discussions ongoing with Irish Rail re railway crossing.
- Navan GDA Cycle Network - Fairgreen to Johnstown - Convent Road Filtered Permeability Trial Scheme ongoing. CCTV & public lighting installation, landscaping elements, together with road markings and signage due to be complete by end of 2021.
- Navan Bus Stops – works completed at a number of locations throughout Navan during 2021. Design work continuing on additional locations including a bus turn about facility in Robinstown.
- Harlockstown Pedestrian and Bus Stop Improvement Scheme - Deed of Dedication for required lands on northern side of the R125 received. Public Lighting design and construction tender documents being finalised.
- Ratoath Cycle Network – Work on-going on revised Part 8 drawings and documents.
- N51 Park & Ride, Navan – Part 8 process completed in early 2021, detailed design progressing with civil design complete and electrical element design being finalised before Tender Stage.
- HGV Transport Study -Navan - Preliminary work on the HGV study model complete.
- Navan Rail Line - Meath County Council undertook significant data gathering and examination of the potential usage of a future rail line to Navan, to inform the review of the Navan Rail Line that was undertaken by the NTA. The publication of the NDP indicates that the rail line is now a national objective.
- Navan - Circular Rd to Martha's Bridge Cycle & Walkway – Tender documents being finalised
- Ashbourne - R135 Frederick Street to Ballybin Road – to commence construction by end of 2021
- Bettystown to Donacarney Walking & Cycling Infrastructure – Approval received from NTA to proceed with the Part 8 process

As well as the above, work continued on the delivery of other Transportation/Operations services:

- Development Control / Transport Planning Advice – volume of applications assessed increased significantly in 2021
- Ordinary Maintenance, Winter Maintenance Service and Maintenance of Plant and Machinery;
- Capital Programme of Footpath Improvement Works
- Public Lighting Services, maintenance and progression of National Retrofit Scheme to achieve energy efficiencies across the county
- Road Safety Improvement Schemes, Promotion and Education;
- Road Opening Licences, Abnormal Load Applications, Roads and Services in Charge queries;
- Review of Bus licences, Bus Stop locations and Taxi ranks;
- Additional funding was provided by DoT of €680,8674 for Drainage Schemes throughout the county
- Processing of applications for Section 254, skip scaffolding & hoarding licences, as well as signage various signage applications.

Initiatives and Challenges for 2022:

In preparing the Budget for 2022 an assumption has been made that grant funding from Government Departments will be at a similar level to what was allocated in 2021. The continuing challenge for the Council in 2022 will be to deploy the resources available in the most effective way to maintain the network and provide the best level of service possible to the public. The key will be to deliver this service in a manner that is safe for the public, for staff and for contractors alike. Post the impacts of COVID, concerns continue over on-going supply chain and delivery issues as well as the related cost implications and fuel price increases. All of these will be factors in increasing tender prices and impact ability to deliver on planned works in the coming year.

Progression of all major Capital Schemes will be a priority in 2022, with particular focus on progressing construction of the N51 Dunmoe – Phase 2 scheme; submitting the Strategic Infrastructure Development application for the N2 Slane Bypass to An Bord Pleanála; and commencement of the construction of Phase 3 of the Navan 2030 Scheme.

There is a continued focus on the infrastructure priorities for the growth areas in the County, particularly Navan, Drogheda and Dunboyne.

The NTA have engaged with the Council on a 5-year plan for cycle facilities in the county as part of the Government's ambitious plan to fund €1.8bn for same during its time in office. Meath County Council, with the support of the National Transport Authority is currently establishing an Active Travel team to progress the Government's plans for cycling, walking and public transport initiatives. This team will be fully operational by early 2022 and will progress these sustainable transport measures as well as additional cycle parking throughout the county and the Safe Routes to Schools Programme.

TABLE B: Expenditure and Income for 2022 and Estimated Outturn for 2021

Division & Services	2022				2021			
	Expenditure		Income		Expenditure		Income	
	Adopted by Council €	Estimated by Chief Executive €	Adopted by Council €	Estimated by Chief Executive €	Adopted by Council €	Estimated Outturn €	Adopted by Council €	Estimated Outturn €
B Road Transport & Safety								
B01 NP Road - Maintenance and Improvement	964,225	964,225	291,730	291,730	821,692	822,146	284,121	284,121
B02 NS Road - Maintenance and Improvement	381,975	381,975	310,933	310,933	375,412	375,569	303,549	303,549
B03 Regional Road - Maintenance and Improvement	13,968,902	13,968,902	10,421,637	10,421,637	13,112,548	13,039,212	9,829,794	9,723,864
B04 Local Road - Maintenance and Improvement	21,279,292	21,279,292	11,712,592	11,712,592	19,719,102	21,024,930	11,096,364	12,415,161
B05 Public Lighting	3,702,764	3,702,764	16	16	2,865,371	2,865,421	15	15
B06 Traffic Management Improvement	104,543	104,543	2,489	2,489	103,168	103,209	2,362	2,362
B07 Road Safety Engineering Improvement	419,113	419,113	361,582	361,582	333,679	415,010	280,298	221,298
B08 Road Safety Promotion & Education	383,546	383,546	8,968	8,968	374,892	375,425	8,511	8,511
B09 Car Parking	1,119,599	1,119,599	1,336,000	1,336,000	1,030,439	1,098,939	1,316,000	1,316,000
B10 Support to Roads Capital Prog	1,980,051	1,980,051	159,002	159,002	1,893,039	1,910,414	150,895	150,895
B11 Agency & Recoupable Services	3,567,280	3,567,280	2,531,585	2,531,585	3,817,443	3,828,554	2,511,172	2,499,004
Division B Total	47,871,290	47,871,290	27,136,534	27,136,534	44,446,785	45,858,829	25,783,081	26,924,780

Table F - Expenditure

Division B - Road Transport & Safety

Expenditure by Service and Sub-Service	2022		2021	
	Adopted by Council €	Estimated by Chief Executive €	Adopted by Council €	Estimated Outturn €
B0101 NP - Surface Dressing	-	-	-	-
B0102 NP - Pavement Overlay/Reconstruction	-	-	-	-
B0103 NP - Winter Maintenance	103,546	103,546	103,546	103,546
B0104 NP - Bridge Maintenance (Eirspan)	-	-	-	-
B0105 NP - General Maintenance	177,204	177,204	177,204	177,204
B0106 NP - General Improvements Works	-	-	-	-
B0199 Service Support Costs	683,475	683,475	540,942	541,396
B01 NP Road - Maintenance and Improvement	964,225	964,225	821,692	822,146
B0201 NS - Surface Dressing	-	-	-	-
B0202 NS - Overlay/Reconstruction	-	-	-	-
B0203 NS - Overlay/Reconstruction – Urban	-	-	-	-
B0204 NS - Winter Maintenance	121,734	121,734	121,734	121,734
B0205 NS - Bridge Maintenance (Eirspan)	-	-	-	-
B0206 NS - General Maintenance	204,923	204,923	202,554	202,554
B0207 NS - General Improvement Works	-	-	-	-
B0299 Service Support Costs	55,318	55,318	51,124	51,281
B02 NS Road - Maintenance and Improvement	381,975	381,975	375,412	375,569
B0301 Regional Roads Surface Dressing	1,097,624	1,097,624	822,500	1,097,624
B0302 Reg Rd Surface Rest/Road Reconstruction/Overlay	5,058,720	5,058,720	4,734,774	4,384,720
B0303 Regional Road Winter Maintenance	239,634	239,634	139,634	139,634
B0304 Regional Road Bridge Maintenance	-	-	-	-
B0305 Regional Road General Maintenance Works	4,683,100	4,683,100	4,626,019	4,626,019
B0306 Regional Road General Improvement Works	-	-	-	-
B0399 Service Support Costs	2,889,824	2,889,824	2,789,621	2,791,215
B03 Regional Road - Maintenance and Improvement	13,968,902	13,968,902	13,112,548	13,039,212
B0401 Local Road Surface Dressing	2,470,745	2,470,745	2,465,369	2,370,745
B0402 Local Rd Surface Rest/Road Reconstruction/Overlay	8,239,280	8,239,280	7,931,726	9,339,280
B0403 Local Roads Winter Maintenance	-	-	-	-
B0404 Local Roads Bridge Maintenance	200,000	200,000	100,000	100,000
B0405 Local Roads General Maintenance Works	6,149,387	6,149,387	5,432,626	5,419,493
B0406 Local Roads General Improvement Works	400,000	400,000	-	-
B0499 Service Support Costs	3,819,880	3,819,880	3,789,381	3,795,412
B04 Local Road - Maintenance and Improvement	21,279,292	21,279,292	19,719,102	21,024,930
B0501 Public Lighting Operating Costs	3,354,212	3,354,212	2,584,212	2,584,212
B0502 Public Lighting Improvement	-	-	-	-
B0599 Service Support Costs	348,552	348,552	281,159	281,209
B05 Public Lighting	3,702,764	3,702,764	2,865,371	2,865,421

Table F - Expenditure

Division B - Road Transport & Safety

Expenditure by Service and Sub-Service	2022		2021	
	Adopted by Council €	Estimated by Chief Executive €	Adopted by Council €	Estimated Outturn €
B0601 Traffic Management	-	-	-	-
B0602 Traffic Maintenance	-	-	-	-
B0603 Traffic Improvement Measures	82,001	82,001	82,001	82,001
B0699 Service Support Costs	22,542	22,542	21,167	21,208
B06 Traffic Management Improvement	104,543	104,543	103,168	103,209
B0701 Low Cost Remedial Measures	356,000	356,000	275,000	356,000
B0702 Other Engineering Improvements	-	-	-	-
B0799 Service Support Costs	63,113	63,113	58,679	59,010
B07 Road Safety Engineering Improvement	419,113	419,113	333,679	415,010
B0801 School Wardens	209,060	209,060	208,312	208,312
B0802 Publicity and Promotion Road Safety	55,042	55,042	54,124	54,124
B0899 Service Support Costs	119,444	119,444	112,456	112,989
B08 Road Safety Promotion & Education	383,546	383,546	374,892	375,425
B0901 Maintenance and Management of Car Parks	-	-	-	-
B0902 Operation of Street Parking	822,500	822,500	739,000	807,500
B0903 Parking Enforcement	85,000	85,000	85,000	85,000
B0999 Service Support Costs	212,099	212,099	206,439	206,439
B09 Car Parking	1,119,599	1,119,599	1,030,439	1,098,939
B1001 Administration of Roads Capital Programme	-	-	-	-
B1099 Service Support Costs	1,980,051	1,980,051	1,893,039	1,910,414
B10 Support to Roads Capital Prog	1,980,051	1,980,051	1,893,039	1,910,414
B1101 Agency & Recoupable Service	3,498,557	3,498,557	3,753,561	3,764,329
B1199 Service Support Costs	68,723	68,723	63,882	64,225
B11 Agency & Recoupable Services	3,567,280	3,567,280	3,817,443	3,828,554
Division B Total	47,871,290	47,871,290	44,446,785	45,858,829

Table F - Income

Division B - Road Transport & Safety

	2022		2021	
	Adopted by Council €	Estimated by Chief Executive €	Adopted by Council €	Estimated Outturn €
Income by Source				
Government Grants & Subsidies				
Housing, Local Government & Heritage	-	-	-	-
TII Transport Infrastructure Ireland	22,663,385	22,663,385	21,380,924	22,515,791
Media, Tourism, Art, Culture, Sport & the Gaeltacht	-	-	-	-
National Transport Authority	-	-	-	-
Transport	-	-	-	-
Community, Rural Development & the Islands	-	-	-	-
Other	-	-	-	-
Total Government Grants & Subsidies	22,663,385	22,663,385	21,380,924	22,515,791
Goods & Services				
Parking Fines & Charges	1,323,000	1,323,000	1,303,000	1,303,000
Superannuation	490,091	490,091	465,103	465,103
Agency Services & Repayable Works	-	-	-	-
Local Authority Contributions	100,000	100,000	-	-
Other income	2,560,058	2,560,058	2,634,054	2,640,886
Total Goods & Services	4,473,149	4,473,149	4,402,157	4,408,989
Division B Total	27,136,534	27,136,534	25,783,081	26,924,780

Service Division C

Water Services - Delivery in 2021



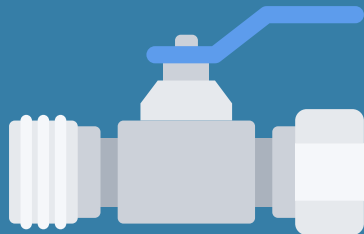
Service Level Agreement

In 2022, the Council will enter year nine of the twelve year Service Level Agreement with Irish Water.

9



64



The Council operates and maintains 64 separate water treatment plants, over 2,000km of pipe network...

The Council operates and maintains 40 reservoirs and numerous pumping stations



40



Direct Responsibility

Storm Water Drainage | Storm Flooding
Group Schemes | Private Regulated Water Supplies
Well Grants | Lead Piping Replacement Grants



comhairle chontae na mí
meath county council

SERVICE DIVISION C

Water Services



In 2022, Meath County Council will enter year nine of the twelve year Service Level Agreement with Irish Water, which ensures the continued provision of day to day water and wastewater operation and maintenance and capital delivery services.

Under this Service Level Agreement, Meath County Council continues to operate and maintain all water services facilities and networks within County Meath and to project manage capital programmes on behalf of Irish Water. In this capacity, the Council continues to play a key role in the provision of water and wastewater services to the residents and businesses of the county.

The Council's 2022 Budget accounts for Water Services staff payroll, directly incurred costs and a representative proportion of the Central Management Charge, which will be recouped on a monthly basis from Irish Water during 2022. Irish Water has budgeted directly for the provision of the goods and services associated with the provision of Water Services.

Irish Water does not have responsibility for storm water drainage, storm flooding, group schemes, private regulated water supplies, well grants or lead piping replacement grants.

The revised grant scheme for the improvement of private water supply to a house, resulted in an increased number of applications and grants, during 2021. The numbers are expected to increase further in 2022. Meath County Council will continue to have direct responsibility for these matters and is making provision for same in the 2022 Budget.

During 2022, a number of Water Services capital projects will commence on site and this, coupled with the Council's on-going commitment to water conservation and continued close engagement with Irish Water to secure further capital investment in critical Water Services infrastructure, will serve to facilitate the planned development and growth of Meath into 2022 and beyond.

TABLE B: Expenditure and Income for 2022 and Estimated Outturn for 2021

Division & Services	2022				2021			
	Expenditure		Income		Expenditure		Income	
	Adopted by Council €	Estimated by Chief Executive €	Adopted by Council €	Estimated by Chief Executive €	Adopted by Council €	Estimated Outturn €	Adopted by Council €	Estimated Outturn €
C Water Services								
C01 Water Supply	4,774,268	4,774,268	235,856	235,856	4,666,404	4,671,468	223,830	223,830
C02 Waste Water Treatment	3,786,775	3,786,775	128,908	128,908	3,632,014	3,634,726	122,335	122,335
C03 Collection of Water and Waste Water Charges	54,009	54,009	4,908	4,908	50,121	50,272	4,658	4,658
C04 Public Conveniences	60,312	60,312	22,025	22,025	59,179	59,190	21,921	21,921
C05 Admin of Group and Private Installations	317,277	317,277	241,198	241,198	317,524	317,753	230,882	230,882
C06 Support to Water Capital Programme	1,499,776	1,499,776	94	94	1,370,239	1,385,439	90	90
C07 Agency & Recoupable Services	8,552	8,552	8,709,773	8,709,773	8,287	8,348	8,561,805	8,561,805
C08 Local Authority Water and Sanitary Services	2,500	2,500	-	-	2,500	2,500	-	-
Division C Total	10,503,469	10,503,469	9,342,762	9,342,762	10,106,268	10,129,696	9,165,521	9,165,521

Table F - Expenditure

Division C - Water Services

Expenditure by Service and Sub-Service	2022		2021	
	Adopted by Council €	Estimated by Chief Executive €	Adopted by Council €	Estimated Outturn €
C0101 Water Plants & Networks	2,442,120	2,442,120	2,562,977	2,562,977
C0199 Service Support Costs	2,332,148	2,332,148	2,103,427	2,108,491
C01 Water Supply	4,774,268	4,774,268	4,666,404	4,671,468
C0201 Waste Plants and Networks	1,598,324	1,598,324	1,571,573	1,571,573
C0299 Service Support Costs	2,188,451	2,188,451	2,060,441	2,063,153
C02 Waste Water Treatment	3,786,775	3,786,775	3,632,014	3,634,726
C0301 Debt Management Water and Waste Water	-	-	-	-
C0399 Service Support Costs	54,009	54,009	50,121	50,272
C03 Collection of Water and Waste Water Charges	54,009	54,009	50,121	50,272
C0401 Operation and Maintenance of Public Conveniences	52,183	52,183	52,183	52,183
C0499 Service Support Costs	8,129	8,129	6,996	7,007
C04 Public Conveniences	60,312	60,312	59,179	59,190
C0501 Grants for Individual Installations	27,000	27,000	45,000	45,000
C0502 Grants for Water Group Schemes	160,000	160,000	150,000	150,000
C0503 Grants for Waste Water Group Schemes	-	-	-	-
C0504 Group Water Scheme Subsidies	49,874	49,874	47,194	47,194
C0599 Service Support Costs	80,403	80,403	75,330	75,559
C05 Admin of Group and Private Installations	317,277	317,277	317,524	317,753
C0601 Technical Design and Supervision	-	-	-	-
C0699 Service Support Costs	1,499,776	1,499,776	1,370,239	1,385,439
C06 Support to Water Capital Programme	1,499,776	1,499,776	1,370,239	1,385,439
C0701 Agency & Recoupable Service	-	-	-	-
C0799 Service Support Costs	8,552	8,552	8,287	8,348
C07 Agency & Recoupable Services	8,552	8,552	8,287	8,348
C0801 Local Authority Water Services	2,500	2,500	2,500	2,500
C0802 Local Authority Sanitary Services	-	-	-	-
C0899 Local Authority Service Support Costs	-	-	-	-
C08 Local Authority Water and Sanitary Services	2,500	2,500	2,500	2,500
Division C Total	10,503,469	10,503,469	10,106,268	10,129,696

Table F - Income

Division C - Water Services

	2022		2021	
	Adopted by Council €	Estimated by Chief Executive €	Adopted by Council €	Estimated Outturn €
Income by Source				
Government Grants & Subsidies				
Housing, Local Government & Heritage	235,000	235,000	225,000	225,000
Other	-	-	-	-
Total Government Grants & Subsidies	235,000	235,000	225,000	225,000
Goods & Services				
Irish Water	8,709,408	8,709,408	8,561,458	8,561,458
Superannuation	378,354	378,354	359,063	359,063
Agency Services & Repayable Works	-	-	-	-
Local Authority Contributions	-	-	-	-
Other income	20,000	20,000	20,000	20,000
Total Goods & Services	9,107,762	9,107,762	8,940,521	8,940,521
Division C Total	9,342,762	9,342,762	9,165,521	9,165,521

Service Division D

Development Management - Delivery in 2021

€500k



Total amount of funding provided by Meath LEO in direct grant support for start up and growing businesses in 2021

255



Total number of entries received for the 2021 Pride of Place Awards.

48



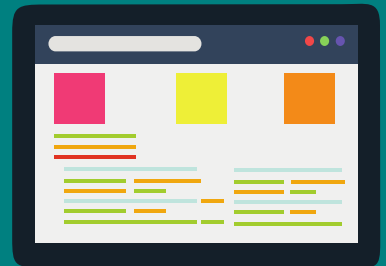
The number of schools who participated in the Schools Pride of Place Gardening Scheme

Number of travel journalists and influencers who visited the Boyne Valley over the last 6 months



12

6



Total number of ACORN Tablets donated to nursing homes by Meath Age Friendly



Trading Online Vouchers

€1m in grants awarded to 432 local businesses

Business Continuity Vouchers

500 vouchers with a value of over €1m awarded



comhairle chontae na mí
meath county council

SERVICE DIVISION D

Development Management

PLANNING AND DEVELOPMENT

Achievements in 2021

Forward Planning



The Meath County Development Plan 2021-2027 was adopted at a Special Planning Meeting held between September 20-22, 2021. Members considered the Chief Executive's Report in relation to the submissions received during the display of the material alterations of the draft plan.

In accordance with Section 31AM(6)(a) the Chief Executive was required to write to the Office of the Planning Regulator to notify the office of the decisions made by the elected members which, in the opinion of the planning authority, did not comply with the recommendations made as part of the public consultation on the Material Amendments to the Draft CDP (submission reference MH-C52-293). On November 2, a Draft Direction was issued by the Minister in accordance with Section 31 of the Planning & Development Acts as amended. The Draft Direction is subject to a public consultation and the outcome of this process is awaited.

The Plan came into effect on November 3, 2021, 6 weeks from the date of adoption, except for those section that are the subject of the Draft Direction.

Development Contributions

Receipts from development contributions have risen on previous years, with a projected outturn in the region of €11m for 2021. The Financial Compliance Team continues to engage with debtors in order to seek compliance with the conditions of planning.

Compliance Activities

Complaints regarding planning compliance continue to form a large part of the work of the Planning Department. The Council continues to carry out its function in regard to the taking-in-charge of estates. The Planning Department is currently liaising with the Council's Water Services Department and Irish Water in relation to progressing the taking-in-charge of a number of residential developments.

Development Management

The number of applications received continues to increase year-on-year. An increase of 10% in applications in comparison to the overall figure for 2020 (2114) is expected. Pre-planning clinics are now fully subscribed and the Planning Department continues to note an improvement in the scope and complexity of development proposals being considered.

The Planning Department also attended a number of formal Section 247 (pre-planning) meetings in An Bord Pleanála, relating to a Strategic Housing Development.

Quarry Regulation

The Planning Authority continues to monitor and assess quarrying operations in Meath.

Building Control

The Council's Building Control function is performed by the Building Control Officer who also leads the Planning Enforcement Team. The Building Control function plays a critical role in informing the Council's Financial Compliance Team.

Vacant Sites Register

Meath County Council continues to identify appropriate sites for the Vacant Sites Register. The register is available to view on <https://www.meath.ie/council/council-services/planning-and-building/vacant-or-derelect-sites-and-dangerous-structures/vacant-sites>

Initiatives and challenges for 2022

- Implementation of the Meath County Development Plan (CDP) 2021-2027.
- Implementation of the Joint Urban Area/Local Area Plan programme following adoption of the CDP.
- Introduction of the Large Scale Residential Development (LSRD) Scheme.
- Work will continue on placing sites on the Vacant Sites Register and the introduction of the new Zoned Land Tax announced in the Budget.
- Assistance will be provided on a number of projects under the URDF, RRDF, Part 8s and various other initiatives and schemes.
- The Planning Department will continue to ensure that a quality service is provided across all areas of the Planning function and continue to work closely and engage with all stakeholders.

ECONOMIC DEVELOPMENT AND ENTERPRISE

Introduction

The implementation of the Economic Development Strategy 2014-2022 is now in its seventh year and there are very positive results and success stories across the county. Meath is now undoubtedly perceived both on the national and international stage as a prime business location, with additional investments in Foreign Direct Investment and local investment.

Achievements in 2021

The overall picture is very positive. The county continues to perform strongly in areas such as new indigenous investments and food production, as evidenced by data from Enterprise Ireland and from being a regular Foodie Destination finalist.

Employment rates in the county continue to grow, with the 2016 census data showing the third highest employment participation rate in the county.

Business Supports

The year was very challenging for local businesses because of the continuing Covid related restrictions. The Trading Online Voucher scheme to allow companies go on-line and trade for the first time was greatly expanded during the year, with over €1m in grants being awarded to 432 local businesses.

Business Continuity Vouchers were introduced to assist companies deal with the direct effects of the pandemic emergency. Almost 500 vouchers with a value of over €1m were awarded to local companies.

Boyne Valley Food Strategy, in conjunction with Louth County Council, has been successfully continued and the dedicated Food Development Officer continues to drive the implementation of the strategy, working with a voluntary steering committee of local artisan food producers. Considerable national and international attention is being focused on the success of the Boyne Valley region.

2021 saw continued roll-out of the very popular shop front scheme and the new outdoor dining grants.

Meath LEO provided funding of over €500,000 in direct grant support to start-up and growing businesses in 2021 and continued the successful rollout of training programmes, mentoring and business information seminars for SMEs during the year. All of the training and mentoring was delivered very successfully on-line, in accordance with Government Covid guidelines.



The LEO continues to work with all business development stakeholders including Enterprise Ireland, IDA, LEADER, Solas, Údaras na Gaeltachta, INTREO and SkillNets.

TOURISM DEVELOPMENT

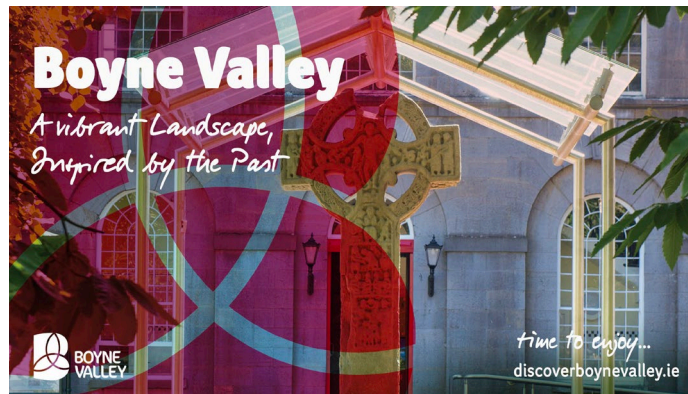
Achievements in 2021

2021 has been a difficult year for the tourism industry but it has also been a year of innovation and opportunity. Boyne Valley Tourism and Meath County Council have worked with the tourism industry to facilitate, advise and support, as well as, investing in a strong domestic marketing campaign.



Marketing and Promotion

- Time to Enjoy Summer Campaign included print and digital advertising achieving 1.1m impressions and almost 9k click-through visits to the website.
- 15 Boyne Valley Ambassadors /local tourism businesses were chosen to contribute to a social media campaign to highlight the destination, funded by Failte Ireland.
- The Boyne Valley brochure was designed, printed and distributed at Dublin Airport and across businesses.
- Boyne Valley held a Virtual Media Event in March ahead of the industry re-opening and had 16 national journalists and influencers in attendance, many of whom have written positive news articles about the Boyne Valley.
- Over 12 travel journalists and influencers visited the Boyne Valley over the past six months with itineraries created by Boyne Valley Tourism. This has resulted in a significant amount of coverage for County Meath and the Boyne Valley from the key national newspapers and social media travel bloggers.
- Henry McKean, Newstalk was invited to visit in July. Henry did an interview on the Pat Kenny Show with a recording from Slane. His piece entitled 'There are so many hidden gems in the Boyne Valley' was produced as a video and article and published on the Newstalk website.
- U105 radio presenter Denise Watson was invited to visit the Boyne Valley and did 6 live phone-ins and an online article supplemented by 2 months of radio adverts.



- Increased online presence in 2021 to over 36,000 social media followers and a 177% increase in reach. Each week, new content is produced including blogs, travel inspiration, itineraries and ezines.
- A collaborative marketing campaign with Waterways Ireland to promote the Royal Canal Greenway was undertaken throughout the year.
- Meath County Council and the Boyne Blueway Steering Committee submitted an application for Phase 2 Accreditation for the Blueway.

New Website:

In March, ahead of the holiday season, Discover Boyne Valley launched its new look website www.discoverboynevalley.ie making booking a visit to the Boyne Valley easier than ever before.

The website features all you need to know to book a break. It contains engaging videos on the world class Boyne Valley heritage sites, along with information on good food restaurants, local tours, family fun, activities and much more.

Destination Towns Project

Meath County Council is developing a performance space and enhanced walking trails in the Porchfield in Trim with funding from Failte Ireland and Meath County Council. The project includes a performance area with power available for small events, interpretive storyboards and a digital storytrail, a wildflower meadow, recreational area, resin pathways and seating throughout.

Tourist Offices

Meath County Council continues to support the operation of two tourist offices at the Trim Visitor Centre and Kells Courthouse Tourism and Cultural Hub. The tourist offices reopened in May and June respectively and have remained open since, operating a full service to visitors and locals alike.

Initiatives and Challenges for 2022

- Complete delivery of the digital storytrail for the Porchfield project.
- Build on 2021 domestic marketing and PR campaigns, now integrating international markets for 2022.
- Promotional Shows will resume in 2022 with a stand at the Dublin and Belfast Holiday World Shows in January followed by the Balmoral Show in Northern Ireland in May.
- Build on social media channel engagement by introducing TikTok targeting a younger audience to travel to the Boyne Valley.
- Collaborate with Fáilte Ireland on the Re-imagined Boyne Valley Drive project
- Development of Evening Economy experiences to increase overnights and dwell time will be a focus for 2022 subject to recovery from Covid.

- Continue development and marketing of the Greenways and Boyne Blueway.

COMMUNITY DEVELOPMENT

Achievements in 2021

Local Authorities have a strengthened role in local and community development with the focus on promoting the well-being and quality of life of citizens and communities.

Community Response Forum Covid 19



The Community Response Forum set up during Covid continued to meet regularly until restrictions started to ease. The freephone number and email address set up also continued to be used albeit at a reduced rate and was finally discontinued in November.

Local Community Development Committee (LCDC)

The function of the LCDC is to implement the 2016-2021 Local Economic Community Plan, to coordinate, manage and oversee the implementation of local and community programmes on behalf of the Government departments e.g. SICAP, LEADER, Healthy Ireland scheme and the Community Enhancement Programmes.

Local Economic & Community Plan (LECP) 2016-2021

The LCDC prepared a six-year statutory Local Economic Community Plan in conjunction with the Council. This Plan serves as the primary strategy guiding development in Meath and the targeting of resources under the direct management of the LCDC. Any funding applications for proposed projects must also be consistent with the objectives of the plan. Quarterly updates are sought from the agencies involved and presented to the LCDC. Guidelines for the development of the next LECP are awaited from the Department and a provision has been made in the 2022 budget for the preparation of the next plan.

Social Inclusion Community Activation Programme (SICAP) 2018 - 2022

The SICAP Programme which is funded by the Department of Rural & Community Development aims to reduce poverty, promote social inclusion and equality through local engagement and collaboration. This is the fourth year of the 5-year programme with this year's budget at €405,136.00. The Department has advised that the SICAP programme will be extended by 12 months to 31st December 2023 and also noted that this was included as an option in the original tender and subsequent funding agreement. Meath Partnership who was awarded the contract continues to deliver the programme on behalf of the LCDC.

The Meath Wellness Hub, which links with the current SICAP programme in Meath, has been established through funding provided from the Dormant Accounts scheme. The Wellness Hub helps to support individuals on their road to mental health recovery by helping them to manage stress, promote resilience, increase self-esteem while connecting them to peers and social networks within their communities. It is currently proving to be a very successful programme.

LEADER Programme 2014-2022

The LCDC and Local Authority are responsible for monitoring/overseeing the delivery of the LEADER programme where the existing programme was extended to March 31st, 2021 as a result of Covid 19.

The Transitional LEADER Programme commenced in April as a result of delays in agreeing the Common Agricultural Policy at EU level. The Transitional Programme will bridge the gap between the last programme and the new LEADER Programme to commence in 2023. The national budget is €70m - €50m exchequer and EU funded and a further €20m from EURI to assist Covid 19 recovery. The Framework, objectives and actions will remain the same as the 2014 – 2020 Programme although amendments will be permitted to the Local Development Strategy (LDS) to address emerging issues. The transitional budget for Meath, will be just over €2m with €1.5m for projects and €0.5m for administration and animation.

Projects funded under the transitional programme, must be approved before December 2022 and completed by December 2023. To date €274,958.78 or 18% of the budget has been committed under the Transitional Programme with over a million euro still to be allocated and it is envisaged that the allocation will be committed by the end of next year (2022).

Under the LEADER programme 2014-2022, 64% of the claims to the value of €3,265,542.80 have been paid to date.

Public Participation Network (PPN)

There are currently over 1000 groups now registered to the PPN. These groups received regular updates on funding, consultations and events through e-bulletins, Facebook and the website. The PPN hosted a number of training webinars which included Climate Action and Finance.

As part of the Community Response Forum for Covid the PPN continued to facilitate community mobilization through a map of supports available across the county. This map has been continually updated to reflect the number of volunteers and services still available throughout the pandemic.

The process of reform in the PPN has begun in order to comply with the new PPN Handbook. One of the first steps will be a re-registration of all groups in the PPN and this will commence in the coming weeks.

Meath Age Friendly Initiative

Age Friendly Meath continued to work with the Sports Partnership, Healthy Ireland, Library, Arts, and Climate Change Departments to roll out initiatives under the national Keep Well campaign which finished in June. A grant was also received to purchase 6 ACORN tablets which were donated to nursing homes to help residents keep in touch with family members.



The Age Friendly Business initiative was rolled out in Athboy where over 25 businesses received training which encouraged them to get involved and ensure their property is easily accessible to older persons. The scheme was officially launched on May 31st by Sean Boylan, Meath Age Friendly Ambassador. The launch coincided with the official opening of the integrated Medical Centre in the former McElhinneys Ladies store. Building on this launch, an Age Friendly day was held in Athboy in July with many businesses offering discounts on the day. Age Friendly Meath also participated in the Dementia Inclusive Communities workshop as Athboy was one of the pilot towns rolling out the promotion of Dementia Awareness to Communities.

Preparation of a new 5-year Age Friendly Strategy commenced and is due for completion by year end. The Older Persons Committee met a number of times by Zoom throughout the year for discussions and chats.

Comhairle na nÓg

Youth Work Ireland Meath was awarded the tender at the start of 2021 to continue to facilitate Meath Comhairle na n'Óg on behalf of Meath County Council by way of a Service Level Agreement. The Comhairle continued to meet regularly online throughout the pandemic. It has now also started to meet in person in small groups. This year it worked on a new topic of Youth Facilities and has created a list of all the facilities available to young people in Meath. They made a video presentation to the February Council meeting in relation to facilities. They hope to develop an app to make this more accessible to all. They also took part in dementia awareness training with the Alzheimer's Association of Ireland and in the Healthy Ireland, 'Not Around Us' campaign. They were involved in a consultation piece with NUIG in relation to how the pandemic affected young people and created a video series of political interviews with Minister Thomas Byrne and Senator Sharon Keoghan.

Joint Policing Committee (JPC)

The JPC and sub-groups met several times virtually this year. The Annual Report 2020 was adopted in March by the committee. A new property marking machine has been purchased for distribution for usage by groups in the county. A Draft JPC Strategy 2021-2026 is scheduled for discussion and adoption by year end.

Unity Centre, Windtown, Navan

The Unity Centre provides a space for community activities as well as training and leisure activities. Due to the Covid-19 health emergency and resulting restrictions the centre was closed to the public earlier this year, however, during this time it continued to host vital support services to the vulnerable in the community. The centre reopened in July 2021 and in accordance with public health guidance it is operating on a reduced capacity basis and continues to host several organisations and bookings including the preschool, HSE, Prosper Meath, Praxis, Navan Schools Completion Service, Springboard Family Support, Comhairle na nÓg, youth groups and Meath Partnership. It is hoped that once restrictions are lifted the use of the Unity Centre will substantially increase.

Meath Local Sports Partnership



The Council continues to increase, year-on-year, its support for the local Sports Partnership, which works in partnership with the main sporting bodies. In parallel, the Council supports the engagement of development officers for the three main sporting bodies in the country along with Basketball Ireland.

Pride of Place initiative

The Pride of Place awards at Municipal District and County level took place during October and November. A total of 255 entries were received under the various categories and judging took place over the summer months.

This year's entries under the Co-operation Ireland awards are the following:

- Bettystown Tidy Towns - Islands and Coastal Communities
- Ratoath Men's Shed - Community Wellbeing Initiative
- Athboy Development Forum - Population - 2000 – 5000

Schools Pride of Place Gardening Scheme

The submissions from the 48 schools in the Schools Pride of Place Gardening Scheme took place in June. The schools were asked to complete the criteria relevant to their level and send in their submissions digitally. Despite the closure of schools earlier in the year the submissions were of excellent quality and showcased the work the students carried out in their schools to support biodiversity, climate action awareness and learn new gardening skills. Each school will be presented with a certificate acknowledging their achievement before the school year closes.

Grant Schemes

The following grant schemes were processed in 2021:

- The DCEDIY Play & Recreation scheme allocated €14,957 towards the refurbishment of equipment within the Athboy playground.

- Covid 19 Government grant scheme 2nd Round: €52,730 paid out on 37 applications
- Community Grant Scheme 2021 - A total of 458 applications approved under the various categories with a total fund of €156,679 allocated.
- Carranstown Grant Scheme - 22 applications were approved with a total fund of €101,363 allocated.
- Fáilte Ireland, Regional Festivals and Participative Events, Small Grants Scheme 2021 - A small fund of €2,750 was allocated to groups who hold an in-person event this year and to be drawn down by year end.

The Community Amenity Project Scheme

Payments continued to be made under the Community Amenity Grants Scheme. 9 of the 20 projects approved for funding experienced delays as a result of the Covid 19 restrictions. Grants already processed include to the Irish Wheelchair Association for a wheelchair accessible bus, to Seneschalstown for a walking track, to Longwood GAA for a Hurling Wall, to Summerhill GFC for fencing around their walking track and to Killeghland AFC for renovations to the club house.

Community Enhancement Programme

The scheme is being administered by the LCDC under the remit of the local authority with an allocation of €142,893 available to Meath. 55 groups were approved for funding under the programme with works to be completed by year end.

Healthy Ireland Fund Scheme 2019-2021

This fund is administered by the LCDC under the remit of the local authority. The fund runs over two years, however, this has now been extended to March 2022 due to Covid restrictions being in place during this time.

Healthy Ireland - Keep Well Campaign



An allocation of funding was provided by the Department of Health in the amount of €107,560 through Healthy Ireland to help fund local initiatives under the Keep Well Campaign which ran until the end of June.

The campaign was co-ordinated by Meath County Council and the Healthy Ireland co-ordinator for Meath under the following themes - Switching Off/Being Creative and Staying Connected.

Outdoor Recreation Infrastructure Scheme

The Outdoor Recreation Infrastructure Scheme (ORIS) provides funding under 3 separate measures. There were four proposed applications submitted to DRCD for consideration under Measure 1, three under Measure 2 and one under Measure 3. A decision is currently awaited on the outcome of these funding applications.

The Project Development Measure is new for 2021 and will provide funding for the detailed development of projects which would enable them to reach a standard for application under Measure 2 or 3 of ORIS. Such work might encompass detailed design, preparation for the planning and/or procurement, appropriate assessment of a project. One application was submitted and a decision is awaited from the DRCD.

Town & Village Renewal Scheme

Nine funding applications were submitted to the DRCD for consideration and a decision is awaited on the outcome of these applications.

Town & Village Streetscape Enhancement Scheme

The focus of this measure is to revitalise, upgrade and enhance shopfronts and street facades in rural towns and villages. Improving the visual appearance of our urban streetscapes increases pride and confidence in our towns and villages, making them more attractive places to live, work and do business. It will support activity such as painting, signage replacement, shopfront improvement, lighting, and canopies. A number of towns has public realm plans completed or were nearing completion and these were selected to receive funding - Ashbourne, Athboy, Bettystown, Laytown, Slane, Oldcastle. All works had to be completed by mid-November.

CLÁR

Two projects were approved under the scheme with €50k allocated to resurface the Moylagh Community centre carpark and €48,800 allocated to surface the carpark of the Ballinacree community walking track.

Social Enterprise Capital Scheme 2021

This scheme aims to support social enterprises and is complementary to other supports provided by the Department. The scheme will provide social enterprises with small capital grants and is one of several schemes being funded from the Social Enterprise Measure of the Dormant Accounts Fund in 2021.

Social enterprises are businesses that work primarily to improve the lives of people. Their core objective is to achieve a social, societal, or environmental impact. Like other businesses, Social Enterprises pursue their objectives by trading in goods and services on an ongoing basis. However, surpluses generated by social enterprises are re-invested into achieving their core social objectives. They frequently work to support disadvantaged groups such as the long-term unemployed, people with disabilities and the Traveller community.

Broadband

Work continued, subject to Covid restrictions, on the implementation of the National Broadband Plan and related initiatives in County Meath. 15 Broadband Connection Points (BCP's) throughout the county have been connected with the following connected this year: Cortown

GAA, Carnaross Mart, Kilskyrne, Syddan GAA, Drumree GAA, Ballinlough, Bective, Moynalty. In conjunction with the Arts Office, Rathkenny Hall hosted the filming of the “RESILIENCE-Revel once again” concert which will be shown across the country in other BCP’s.



Broadband connections for businesses in Navan for the WiFi4EU network went live in April. Other sites have been identified in the county for the next phase of the WiFi4EU rollout. Funding of €222,354 was secured from the DRCD connected hubs call to improve facilities in the county’s BCP’s

Access Officer

The Access Officer works with Council departments and agencies to address any accessibility issues and promote awareness and the importance of accessibility. The main event held during the year included the “Make Way Day in my 5k” on September 24th, which is a National Public Awareness Campaign to highlight the issues people with disabilities face getting around their local communities.

Joint Migrant Strategy 2019-2022

Meath and Louth County Councils set up a joint Migrant Integration Forum comprising of representatives from state agencies, non-government departments and migrant representatives and meets on a quarterly basis. Meath secured funding from the DCEDIY over 3 years to the amount of €132,480 to roll out some of the actions in the Joint migrant strategy. This year funding is being used to deliver Diversity training to frontline staff, training to community groups through the PPN in integrating migrants into the community, developing the joint integration forum and the purchase of multilingual stock and delivery of interculturalism events through the library to Mosney, Polish and Russian schools and the library branches.

Public Sector Duty

Section 42 of the Irish Human Rights & Equality Commission Act 2014 imposes a statutory obligation on public bodies to have regard to the need to:

- Eliminate discrimination
- Promote equality of opportunity and treatment for staff and persons to whom it provides services
- Protect the human rights of staff and service users.

The 2014 Act requires a public body to assess human rights and equality issues that are relevant to the functions of the organisation, address the issues by setting out what plans and policies already are in place or propose to put in place and report on developments and achievements in its annual report.

The working group continued its work by virtual workshops throughout the year. A number of facilitated training sessions were held with civil society groups, senior management, staff from each section and HR. Support sessions were held for implementing the duty in the Housing Disability Strategy, Community Grants scheme and Customer Service Plan.

AGE FRIENDLY SHARED SERVICE

National Age Friendly Ireland Shared Service

The National Age Friendly Ireland Shared Service office is hosted in Meath County Council on behalf of the local government sector. The annual budget is derived from the Department of Housing, Local Government and Heritage, the Department of Health and the HSE, with additional funding drawn down for specific initiatives. The shared service office employs 6 core staff, two principal advisors, six Regional Age Friendly Programme Managers, and a Research Manager. The staff complement expanded considerably in 2021 with the establishment of the Healthy Age Friendly Homes programme, employing 1 National Manager, nine local coordinators and one administrator, bringing the total staff to 26. The shared service supports a team-based framework of 31 Age Friendly Programme Managers and 31 Age Friendly Technical Advisors across the local government sector.

The programme delivers four strategic objectives: (1) Strengthening and Embedding Local Programmes (2) Scaling up and Replicating Best Practice (3) Measuring Monitoring and Sharing Learning and (4) Supporting the development and delivery of National Policy.

The national Age Friendly Ireland Programme supports cities, counties and towns across Ireland to prepare for the rapid ageing of our population by paying increased attention to the environmental, economic and social factors that influence the health and well-being of older adults.

It co-ordinates, supports and provides technical guidance to the 31-local authority-led, multi-agency Age Friendly Programmes.

Governance of the National Age Friendly Ireland Shared Services is anchored in a National Advisory Group comprising senior representatives from Government Departments and agencies, the local authority and business sectors and is chaired by Meath County Council Chief Executive Jackie Maguire.

A major focus of the work during 2021 was on housing for the ageing population and developing age friendly public realm. A suite of documents, linked to the national policy 'Housing Options for our Ageing Population', was launched in June. These included age friendly planning guidance, an Age Friendly Home Rating tool, a Rightsizing Guide and national templates for Age Friendly Car Parking and Seating, as well as the www.agefriendlyhomes.ie website.

National launch events took place for the Age Friendly Library Digital Ambassadors Programme, the National Age Friendly Business Recognition Programme, and the Healthy Age Friendly Homes Programme | Phase 1. Healthy Age Friendly Homes is an innovative programme funded by Slaintecare that provides direct support to older people in their homes to enable ageing in place. Local co-ordinators undertake home assessment visits and support the older person in the areas of home adaptation or rightsizing, health and community supports, and assistive technology.



A strategic partnership between the National University of Ireland Maynooth and the shared service resulted in the recruitment of a Research Manager into the shared service who will develop linkages between academia and local government in the field of population ageing.

A substantial amount of consultation took place in 2021 with members of Older People's Councils in relation to the Pensions, Postal Regulation, telecommunication, e-scooters, scam calls, and submissions were made to the new Housing for All Policy and the EU Green Paper on Ageing.

TABLE B: Expenditure and Income for 2022 and Estimated Outturn for 2021

Division & Services	2022				2021			
	Expenditure		Income		Expenditure		Income	
	Adopted by Council €	Estimated by Chief Executive €	Adopted by Council €	Estimated by Chief Executive €	Adopted by Council €	Estimated Outturn €	Adopted by Council €	Estimated Outturn €
D Development Management								
D01 Forward Planning	1,159,515	1,159,515	400,317	400,317	1,159,746	1,159,764	500,301	500,301
D02 Development Management	5,080,513	5,080,513	1,243,502	1,243,502	4,132,187	4,158,956	1,011,159	1,011,159
D03 Enforcement	505,705	505,705	-	-	487,645	487,645	-	-
D04 Industrial and Commercial Facilities	302,130	302,130	32,794	32,794	286,268	286,441	32,652	32,652
D05 Tourism Development and Promotion	326,368	326,368	3,035	3,035	314,273	314,356	2,880	2,880
D06 Community and Enterprise Function	3,630,697	3,630,697	2,294,987	2,294,987	3,126,992	3,165,503	1,976,945	2,066,170
D07 Unfinished Housing Estates	186,959	186,959	100,000	100,000	165,537	165,537	100,000	100,000
D08 Building Control	163,395	163,395	-	-	161,047	161,049	-	-
D09 Economic Development and Promotion	2,136,375	2,136,375	1,445,808	1,445,808	2,006,827	3,474,835	1,445,804	2,863,666
D10 Property Management	-	-	-	-	66,516	66,516	-	-
D11 Heritage and Conservation Services	947,297	947,297	466,314	466,314	930,576	930,875	466,038	524,518
D12 Agency & Recoupable Services	65,010	65,010	8,427	8,427	58,489	58,641	7,997	7,997
Division D Total	14,503,964	14,503,964	5,995,184	5,995,184	12,896,103	14,430,118	5,543,776	7,109,343

Table F - Expenditure

Division D - Development Management

Expenditure by Service and Sub-Service	2022		2021	
	Adopted by Council €	Estimated by Chief Executive €	Adopted by Council €	Estimated Outturn €
D0101 Statutory Plans and Policy	1,156,264	1,156,264	1,156,689	1,156,689
D0199 Service Support Costs	3,251	3,251	3,057	3,075
D01 Forward Planning	1,159,515	1,159,515	1,159,746	1,159,764
D0201 Planning Control	3,083,306	3,083,306	2,288,449	2,288,449
D0299 Service Support Costs	1,997,207	1,997,207	1,843,738	1,870,507
D02 Development Management	5,080,513	5,080,513	4,132,187	4,158,956
D0301 Enforcement Costs	505,705	505,705	487,645	487,645
D0399 Service Support Costs	-	-	-	-
D03 Enforcement	505,705	505,705	487,645	487,645
D0401 Industrial Sites Operations	-	-	-	-
D0403 Management of & Contribs to Other Commercial Facs	49,800	49,800	49,860	49,860
D0404 General Development Promotion Work	204,000	204,000	191,500	191,500
D0499 Service Support Costs	48,330	48,330	44,908	45,081
D04 Industrial and Commercial Facilities	302,130	302,130	286,268	286,441
D0501 Tourism Promotion	297,031	297,031	287,551	287,551
D0502 Tourist Facilities Operations	-	-	-	-
D0599 Service Support Costs	29,337	29,337	26,722	26,805
D05 Tourism Development and Promotion	326,368	326,368	314,273	314,356
D0601 General Community & Enterprise Expenses	3,058,711	3,058,711	2,633,384	2,626,211
D0602 RAPID Costs	-	-	-	-
D0603 Social Inclusion	69,160	69,160	25,000	69,160
D0699 Service Support Costs	502,826	502,826	468,608	470,132
D06 Community and Enterprise Function	3,630,697	3,630,697	3,126,992	3,165,503
D0701 Unfinished Housing Estates	186,959	186,959	165,537	165,537
D0799 Service Support Costs	-	-	-	-
D07 Unfinished Housing Estates	186,959	186,959	165,537	165,537
D0801 Building Control Inspection Costs	-	-	-	-
D0802 Building Control Enforcement Costs	-	-	-	-
D0899 Service Support Costs	163,395	163,395	161,047	161,049
D08 Building Control	163,395	163,395	161,047	161,049

Table F - Expenditure

Division D - Development Management

Expenditure by Service and Sub-Service	2022		2021	
	Adopted by Council €	Estimated by Chief Executive €	Adopted by Council €	Estimated Outturn €
D0901 Urban and Village Renewal	-	-	-	-
D0902 EU Projects	-	-	-	-
D0903 Town Twinning	20,000	20,000	5,000	5,000
D0904 European Office	-	-	-	-
D0905 Economic Development & Promotion	606,492	606,492	519,751	569,751
D0906 Local Enterprise Office	1,466,558	1,466,558	1,439,463	2,857,325
D0999 Service Support Costs	43,325	43,325	42,613	42,759
D09 Economic Development and Promotion	2,136,375	2,136,375	2,006,827	3,474,835
D1001 Property Management Costs	-	-	66,516	66,516
D1099 Service Support Costs	-	-	-	-
D10 Property Management	-	-	66,516	66,516
D1101 Heritage Services	513,856	513,856	506,481	506,481
D1102 Conservation Services	352,074	352,074	348,579	348,579
D1103 Conservation Grants	-	-	-	-
D1199 Service Support Costs	81,367	81,367	75,516	75,815
D11 Heritage and Conservation Services	947,297	947,297	930,576	930,875
D1201 Agency & Recoupable Service	-	-	-	-
D1299 Service Support Costs	65,010	65,010	58,489	58,641
D12 Agency & Recoupable Services	65,010	65,010	58,489	58,641
Division D Total	14,503,964	14,503,964	12,896,103	14,430,118

Table F - Income

Division D - Development Management

	2022		2021	
	Adopted by Council €	Estimated by Chief Executive €	Adopted by Council €	Estimated Outturn €
Income by Source				
Government Grants & Subsidies				
Housing, Local Government & Heritage	1,121,029	1,121,029	1,239,224	1,282,912
Media, Tourism, Art, Culture, Sport & the Gaeltacht	-	-	-	-
Enterprise, Trade & Employment	1,268,730	1,268,730	1,268,730	2,686,592
Community, Rural Development & the Islands	-	-	-	-
Other	358,000	358,000	397,445	328,000
Total Government Grants & Subsidies	2,747,759	2,747,759	2,905,399	4,297,504
Goods & Services				
Planning Fees	1,064,000	1,064,000	839,000	839,000
Superannuation	182,272	182,272	172,977	172,977
Agency Services & Repayable Works	-	-	-	-
Local Authority Contributions	1,326,653	1,326,653	851,900	1,000,362
Other income	674,500	674,500	774,500	799,500
Total Goods & Services	3,247,425	3,247,425	2,638,377	2,811,839
Division D Total	5,995,184	5,995,184	5,543,776	7,109,343

Service Division E

Environment, Fire & Emergency Service - Delivery in 2021

There are currently 215 active volunteer members in Civil Defence throughout County Meath



215

A litter bin survey carried out in 2021 showed there are 102 Big Belly solar bins and 580 standard street bins in the County



102

580

11



Total number of projects carried out to the value of €109,000 to tackle illegal dumping

26



Total number of properties on the County Meath Derelict Sites Register

The Ashbounre Flood Alleviation Scheme is at construction stage and is expected to be completed in Q2, 2022. at a cost of circa


€4.5m



comhairle chontae na mí
meath county council

SERVICE DIVISION E

Environment, Fire & Emergency Services

ENVIRONMENT

Introduction

The protection of the environment and the enhancement of the county's natural and built environment are of significant importance for the residents of, and visitors to, County Meath. Clean air and water, a litter free countryside, pristine beaches and sustainable waste management systems are fundamental to a sustainable and high quality environment and improving the quality of life of our citizens.

Environmental Education and Awareness Activities

Each year the Council engages in a wide range of environmental education and awareness activities and supports including:

- Green Schools Initiatives including Green Schools Seminars on Litter and Waste, Water, Energy, Biodiversity, Global Citizenship.
- Picker Pals.
- Grants for School Gardens through CEAF Funding, on average 10 school gardens are supported annually together with approximately 30 community based projects, seminars, workshops. This fund was suspended in 2021 and is due to recommence in 2022.
- Secondary Schools – The Really Rubbish Film Company, ECO UNESCO Young Environmentalists, ReLove Fashion, TY Climate Action Project with the GAA.
- Local Authority Prevention Network (LAPN) - Funding acquired for the Paint Reuse Project at all Meath recycling centres, in conjunction with the Rediscovery Centre.
- Community related projects – Anti-Litter Initiatives, Stop Food Waste Regional Campaign, Green KM, Tree Planting Project, Halloween Awareness Campaign, October Reuse Month.
- Litter Management Support from Meath County Council to community and other groups in terms of equipment and collection of material.
- Food Waste Digester Project at Navan Recycling Centre.
- Comprehensive Dashboard dining, Anti-Litter, Anti-Dog Fouling and Anti-Dumping Advertising Campaign – Cinema, Radio, Billboards, Social Media.
- Provision of signage across the county on litter, dumping, car litter, dog fouling.
- Dedicated collection days for old toys, couches, and on-going collection of paint.
- Bikes for Africa – Reuse project with Rotary Ireland supplying bikes for secondary school transport in the Gambia, through Navan Recycling Centre and Loughan House Prison.
- Plastic Bottle Free Schools – Five schools have signed up for the Water Dispenser Scheme in Meath. High quality touch free water fountains are provided to secondary schools with



participating school required to introduce a ban on single use plastic bottles. The plan is to roll out the scheme to all secondary schools in the coming years.

Anti-Dumping Campaign

Each year Meath County Council undertakes a number of projects targeting known illegal dumping blackspots and/or prevention projects. In 2021, there were 11 projects completed to the value of €109,000. Further Projects for the next round will commence Q1, 2022.

Landfill Remediation

In 2021, there were no municipal landfills being remediated by Meath County Council. The Council applied for registration for two historical municipal landfills with the EPA and a decision is pending. In addition, applications for Certificates of Authorisation for two additional historical landfills in Fletcherstown and Drumconrath will be made to the EPA at the end of 2021. It is not anticipated that the waste in these landfills will have to be removed. Although remediation techniques may be involved to mitigate environmental risk to groundwater, surface water and air.

A project is currently being finalised by the Environment Section in conjunction with Corporate Services to remediate an inert waste storage location involving the removal of approximately 50,000 tonnes of inert soil and stone to facilitate Community infrastructure at Tailteann Drive, Navan. Grant funding has been made available to carry out remediation to Laytown landfill and in particular to carry out an Environmental Risk Assessment and to install a gabion wall along the Nanny estuary. This is currently being examined by consultant engineers.

In the coming years there are a number of unauthorised municipal landfills which will have to be remediated but this will be subject to Department funding.

National Waste Enforcement Priorities

The National Environmental Enforcement Priorities for each year are drawn up by various organisations including the National Waste Enforcement Steering Committee, CCMA Representatives, NIECE, the Department of the Environment, the Waste Enforcement Lead Local Authorities and the Local Authorities Water Programme Office.

For 2021 the following priorities were defined:

- Waste collection – Household & Commercial – Household and Commercial Waste Segregation;
- Construction and Demolition Activity -unauthorised disposal of C&D waste, Article 27 Notifications & Skip Operators;
- End of Life Vehicles Directive and Metals Industry - inspection of both authorised ELV sites and unauthorised operators, storage of immobilised vehicles;
- Tackling significant illegal waste activity – illegal dumping, unauthorised operators, man in the van activities;
- Multi-Agency Sites of Interest - where there are reasonable grounds to believe that there is on-going illegal activity;
- Maintaining and Improving Water Status in all Waterbodies by undertaking inspections of farms, septic tanks and other single house treatment systems and Water Framework Directive monitoring , bathing water monitoring and investigative monitoring;

- Monitor and enforce the drinking water standards in private water supplies;
- Protecting public health and improve air quality by promoting compliance in low smoke zones, enforcement of the solid fuel regulations, supporting the ambient air monitoring programme and responding to air and noise complaints

Derelict Sites

There are currently 26 properties on the County Meath Derelict Sites Register (DSR), twenty-one of which have been added over the past 24 months. An up-to-date list of these properties is available on the Council’s website. The Derelict Sites (DS) Section has been actively engaging with property owners, solicitors, financial institutions and complainants to try resolve dereliction issues prior to acquisition. In the majority of cases there are issues with ownership/title, negative equity or debt. In 2021, notices were issued to compulsorily acquire seven properties and one property was referred to An Bord Pleanala following a submissions relating to the acquisition. All of the properties acquired to date will be developed or improved by the Housing Section of Meath County Council for social housing. The DS section has particular focus in areas where there is funding for urban regeneration.

Climate Action

In 2019, the Council adopted a Climate Action Strategy (2019-24) incorporating both mitigation and adaptation measures and fulfilling statutory obligations provided for in the Climate Action and Low Carbon Development Act 2015.



Over the last year the climate crisis is receiving more focus and legislation, plans and policies are driving ambitions into action. Local authorities are placed in a key leadership role with their level of service provision and large outreach into communities.

The Low Carbon and Climate Action (Amendment) Act 2021 instructs local authorities to produce a Climate Action Plan within 18 months of being enshrined in legislation. This will include both adaptation and mitigation and asks that in making same local authorities consider neighbouring local authorities which in Meath’s case is 7 local authorities. Additionally there is a greater level of public consultation around the plan and specifically with the PPNs. Our current Climate Action Strategy considers both adaptation and mitigation (only one of 5 local authorities to do) therefore it is intended to review and revise the Strategy and not create a new plan, this review will consider our neighbouring local authorities and the national Climate Action Plan 2021 and sectoral Climate Action Plans, if available.

Local authorities were obligated to nominate a Decarbonization Zone in their respective counties. Meath has taken a countywide approach to this with Trim being the ‘Leading and Learning’ town. An Implementation Plan will be prepared, this will establish baseline emissions and create a Register of Opportunities for projects and actions to reduce emissions. Guideline documentation on this is awaited.

In line with the leadership requirements of the Climate Action Charters signed by every local authority, the work of the Meath Climate Academy will continue to show leadership and engage with citizens, communities and businesses to empower climate action at a local level. 2021 ambitions were severely hampered by Covid restrictions and plans for 2022 will be dictated by them. However, the Climate Action Team will examine how this can be delivered in a virtual forum.

Flooding

The Catchment Flood Risk Management Programme (CFRAM) which is led by the Office of Public Works (OPW) sought to identify the communities that were, at the time, and most likely into the future, to be affected by flooding. In 2012, the OPW specifically identified 300 areas or communities believed to be at significant risk of future flooding. The Flood Risk Management Plan which was approved by the Government in April 2018 now includes for 118 additional flood relief schemes (in addition to those already at construction) to be constructed before 2027.

One of the approved schemes is for Mornington and aims to augment existing flood alleviation works there. Subject to project level assessment and planning, this may include physical works such as a series of hard defences (flood embankments and walls) at an estimated cost of €0.53m. Works on the Assessment and Planning will commence in 2021 and continue through 2022.

Another approved scheme is in Drogheda, predominantly in Co Louth, and Louth County Council will be taking the lead on this €16.83m project, with some proposed hard defences proposed for the Marsh Road in Co Meath.

The Ashbourne Flood Alleviation Scheme is at construction stage and is expected to be completed in Q2, 2022, at a cost of circa €4.5million.

Preliminary design and Procurement for a Minor works scheme (approx. €100k) is underway for a project in Tullaghanstown, Navan and should be completed in 2021.

The Feasibility of additional Minor Flood Relief Schemes will continue in 2022.

River Basin Management Plan 2018 -2021

The River Basin Management Plan 2018-2021 was launched on April 17, 2018 and outlines the measures to improve water quality in Ireland's groundwater, rivers, lakes, estuarine and coastal waters over the following four years. The Plan is to fulfil the requirements under the Water Framework Directive (WFD) to protect and improve water quality in approximately 726 of Ireland's 4,829 water bodies over the next four years. The 726 water bodies including nine in County Meath form part of a total of 190 Areas for Action which have been prioritised nationally for particular attention during 2018–2021 and where a cross-disciplinary and multi-agency approach will be involved.

The process for selection of the priority areas for action for the next River Basin Management Plan 2021-2027 is underway and after consultations with LAWPRO and the EPA, the draft Plan is expected to go on public consultation in 2022.

Litter Bin Survey and GIS map

In 2021, a litter bin survey was carried out by the Environment Section to establish the type and number of street bins in County Meath. The survey has shown that there are 102 no. Big Belly solar bins and 580 no. standard street bins. The location of the bins has been mapped and is available on the Council website.

Burial Grounds

- The Rooske Burial Ground Extension was completed in 2021.
- The purchase of new land in Trim for Burial Ground was completed and the part 8 process will start in 2022.
- The examination of lands in Stamullan and extension to St Finian's burial ground in Navan will continue in 2022.

FIRE AND RESCUE SERVICE

Introduction

Meath Fire and Rescue Service covers a broad range of functions ranging from operational response to fire prevention, including:

- Fire fighting and rescue services
- Community fire safety
- Technical fire prevention
- Major emergency planning and pre incident planning

Meath Fire and Rescue Service is ready to respond to a range of incidents and emergencies as requested by the Eastern Regional Control Centre through the 999/112 system. To ensure a continued efficient and effective response, staff are continuously trained and supported to maintain competency in the wide range of skills required. Specialised equipment and fleet are essential to service provision and on-going procurement and maintenance form an important element of the annual budget provision. The requirements for maintaining emergency response incur significant costs in areas including staff training, station and fleet maintenance and communications.

Overall, fire-call volumes in 2021 were slightly up on 2020 rates, which had been lower than previous years due to a knock-on effect from the Covid-19 restrictions.

A contribution is paid annually to the Eastern Regional Control Centre for emergency call handling and mobilisation of fire service resources. The migration of the fire service from its legacy analogue radio systems to the National Digital Radio System known as Tetra has taken place as part of a national CTrí Project. In 2022 the movement of all fire service emergency call systems and communications to a national platform with enhanced resilience and security will be complete. There will be increased costs associated with the on-going enhancement of fire service communications and ICT infrastructure.

Achievements in 2021

Health and Safety

The Meath Fire and Rescue Service continues to maintain an effective and accredited Health and Safety Management System. Following a Surveillance Audit on February 10, 2021, an independent assessor determined that Meath Fire Service Safety “management system continues to meet the needs of the organisation and conforms to the requirements of ISO 45001:2018”.

The Health and Safety Management system has been the cornerstone in maintaining a fully operational service throughout the challenges of the Covid-19 pandemic.

Equipment & Training

The Fire and Rescue Service employs a broad range of specialist equipment in the delivery of its operational rescue service and there was significant investment again during 2021 in equipment and equipment maintenance.

The Training Plan for 2021 was reviewed due to the continuing impacts of Covid-19 and the suspension of all training in the early weeks of 2021, and limited delivery in Q1, 2021. However, it has been possible since then to pick up on training due and to deliver all critical elements to ensure that staff are equipped to protect themselves and meet the high standards of service delivery. The commitment of staff to maintaining services has been excellent and training is under continuous review to meet service needs.

Initiatives and Challenges for 2021

Fleet & Station Maintenance

Meath Fire and Rescue Service maintains fire appliances in seven stations throughout the county and there is a variety of different types of vehicles in operation. Investment in the fleet is a priority so it is a modern, safe and efficient fleet.

A replacement Command Support Vehicle to enhance operational communications and response to serious incidents and major emergencies will form part of the operational fleet later in 2021.

The National Directorate for Fire & Emergency Management has approved funding and allocation for a new Scania Firefighting Appliance for Dunshaughlin Fire Station for delivery in 2022. This vehicle will be provided under the Government’s ‘Fire Service Capital Programme 2021 - 2025’.

Fire Station rebuilding works - Nobber Fire Station

Further to Departmental approval to proceed to Planning and Construction Stages for the refurbishment and extension of Nobber Fire Station, consultants and contractor were appointed to this project. Construction works commenced in July 2021 and completion is scheduled for the end of quarter 2 in 2022.



A temporary fire station has been provided for Nobber fire brigade for the duration of these works and this has ensured that full operational activity has been maintained.

Fire Station rebuilding works - Oldcastle Fire Station

Departmental approval was also secured for the refurbishment of Oldcastle Fire Station and detailed design is underway. Following a planning and tendering process for the project, the upgrading works to Oldcastle Station and facilities are anticipated to commence by the start of Quarter 3, 2022.

Funding for these building projects has been allocated under the Government's 'Fire Service Capital Programme 2016 – 2020'. Investment will continue to be provided in all stations to maintain and improve welfare, training and operational facilities to all seven stations in the County.

Fire Prevention and Community Fire Safety

Fire Prevention Officers deal with a wide range of Fire Safety Certificate applications for new and existing developments and carry out a range of inspections to deal with fire safety of the existing building stock and proposed developments across County Meath. Whilst some inspection activity was impacted by Covid-19, all required fire safety inspections resumed in full during 2021.

It has been a busy year for new developments and the level of applications under the Building Control Acts, Dangerous Substances Licensing and Publicans/Dance Licensing has been on a par with previous years.

The delivery of Community Fire Safety initiatives was significantly impacted by Covid-19 limitations, including the suspension of the Home Fire Safety Check programme and the Primary Schools Fire Safety/4th class initiative. The Primary Schools programme has resumed and engagement with the community on fire safety matters continues, including the communication of fire safety messages by social media. All Meath fire stations have been involved in producing new safety videos for circulation on social media platforms, most recently for National Fire Safety Week 2021. Meath Fire and Rescue Service will continue to develop this area with further initiatives and the development of a new Community Fire Safety Strategy.

CIVIL DEFENCE

There are currently 215 active volunteer members in Civil Defence throughout County Meath. This figure had increased from 180 during 2020. Unit based training activities have returned under strict Covid 19 controls, however we have needed to relocate some of our local units to bigger training locations to maintain adequate physical distancing. Training in eight local units continues in order to maintain certification in areas such as First Aid, Manual Handling and Health & Safety, Search and Communication programmes.

While some normality has returned to community duty events, we have maintained an active role in community assistance and supporting the HSE as part of our Covid Response. So far this year we have completed 43 community taskings, such as medical cover, sports and equine events, along with 219 Covid related assistance taskings, which have contributed to approximately 2000 volunteer hours. These include transporting people to hospital and clinic appointments, delivering food parcels to vulnerable children under the school's meals scheme, delivering essential medical equipment and

medications to people's homes and some transports to test centres. The Covid 19 response has been the longest and most sustained deployment of Civil Defence in its 70-year history.

The opening of Moat View House in 2020 provided a venue for more skill based exercises and regional training. Civil Defence is currently running a national EMT course with regional training being facilitated in Moat View House. The delivery of regional rope rescue and K9 search training has also been facilitated at Moat View House.



The organisation benefited from the provision of an additional 4x4 vehicle allocated by the Civil Defence Branch and an upgraded fire appliance.

During 2021, we recruited thirty-five new volunteers from a waiting list which was generated over the past eighteen months. These volunteers have all completed their induction training which includes, introduction to Civil Defence, Child Protection, CISM, Manual Handling, Radio Operations and Health and Safety, and are all now operational volunteers.

TABLE B: Expenditure and Income for 2022 and Estimated Outturn for 2021

Division & Services	2022				2021			
	Expenditure		Income		Expenditure		Income	
	Adopted by Council €	Estimated by Chief Executive €	Adopted by Council €	Estimated by Chief Executive €	Adopted by Council €	Estimated Outturn €	Adopted by Council €	Estimated Outturn €
E Environmental Services								
E01 Landfill Operation and Aftercare	412,452	412,452	5,361	5,361	409,273	409,371	4,993	5,593
E02 Recovery & Recycling Facilities Operations	676,704	676,704	28,199	28,199	646,372	646,450	143,035	143,035
E03 Waste to Energy Facilities Operations	-	-	-	-	-	-	-	-
E04 Provision of Waste to Collection Services	253,144	253,144	2,541	2,541	203,786	224,917	2,411	2,411
E05 Litter Management	592,837	592,837	60,842	60,842	566,055	566,246	62,544	58,544
E06 Street Cleaning	1,770,348	1,770,348	27,138	27,138	1,712,145	1,712,783	25,755	25,755
E07 Waste Regulations, Monitoring and Enforcement	4,344,655	4,344,655	2,448,047	2,448,047	6,183,976	4,195,812	4,463,177	2,506,734
E08 Waste Management Planning	-	-	-	-	-	-	-	-
E09 Maintenance of Burial Grounds	327,361	327,361	46,179	46,179	292,529	295,830	46,005	44,005
E10 Safety of Structures and Places	921,477	921,477	268,319	268,319	887,616	875,859	267,895	258,220
E11 Operation of Fire Service	4,514,044	4,514,044	362,940	362,940	4,464,648	4,467,553	392,577	415,051
E12 Fire Prevention	525,779	525,779	266,796	266,796	375,248	375,424	266,460	264,750
E13 Water Quality, Air and Noise Pollution	667,040	667,040	74,340	74,340	646,134	642,122	77,946	77,946
E14 Agency & Recoupable Services	258	258	-	-	255	257	-	-
E15 Climate Change and Flooding	599,105	599,105	5,088	5,088	437,066	446,105	4,956	4,956
Division E Total	15,605,204	15,605,204	3,595,790	3,595,790	16,825,103	14,858,729	5,757,754	3,807,000

Table F - Expenditure

Division E - Environmental Services

Expenditure by Service and Sub-Service	2022		2021	
	Adopted by Council €	Estimated by Chief Executive €	Adopted by Council €	Estimated Outturn €
E0101 Landfill Operations	125,000	125,000	125,000	125,000
E0102 Contribution to other LAs - Landfill Facilities	-	-	-	-
E0103 Landfill Aftercare Costs.	257,000	257,000	257,000	257,000
E0199 Service Support Costs	30,452	30,452	27,273	27,371
E01 Landfill Operation and Aftercare	412,452	412,452	409,273	409,371
E0201 Recycling Facilities Operations	543,500	543,500	575,061	575,061
E0202 Bring Centres Operations	112,784	112,784	52,767	52,767
E0204 Other Recycling Services	-	-	-	-
E0299 Service Support Costs	20,420	20,420	18,544	18,622
E02 Recovery & Recycling Facilities Operations	676,704	676,704	646,372	646,450
E0301 Waste to Energy Facilities Operations	-	-	-	-
E0399 Service Support Costs	-	-	-	-
E03 Waste to Energy Facilities Operations	-	-	-	-
E0401 Recycling Waste Collection Services	-	-	-	-
E0402 Organic Waste Collection Services	17,000	17,000	10,000	14,000
E0403 Residual Waste Collection Services	-	-	-	-
E0404 Commercial Waste Collection Services	-	-	-	-
E0406 Contribution to Waste Collection Services	-	-	-	-
E0407 Other Costs Waste Collection	210,547	210,547	170,000	187,000
E0499 Service Support Costs	25,597	25,597	23,786	23,917
E04 Provision of Waste to Collection Services	253,144	253,144	203,786	224,917
E0501 Litter Warden Service	143,625	143,625	141,052	141,052
E0502 Litter Control Initiatives	363,000	363,000	343,000	343,000
E0503 Environmental Awareness Services	30,000	30,000	30,000	30,000
E0599 Service Support Costs	56,212	56,212	52,003	52,194
E05 Litter Management	592,837	592,837	566,055	566,246
E0601 Operation of Street Cleaning Service	1,582,183	1,582,183	1,541,729	1,541,729
E0602 Provision and Improvement of Litter Bins	-	-	-	-
E0699 Service Support Costs	188,165	188,165	170,416	171,054
E06 Street Cleaning	1,770,348	1,770,348	1,712,145	1,712,783
E0701 Monitoring of Waste Regs (incl Private Landfills)	2,289,290	2,289,290	4,263,890	2,269,370
E0702 Enforcement of Waste Regulations	302,032	302,032	294,840	294,840
E0799 Service Support Costs	1,753,333	1,753,333	1,625,246	1,631,602
E07 Waste Regulations, Monitoring and Enforcement	4,344,655	4,344,655	6,183,976	4,195,812

Table F - Expenditure

Division E - Environmental Services

Expenditure by Service and Sub-Service	2022		2021	
	Adopted by Council €	Estimated by Chief Executive €	Adopted by Council €	Estimated Outturn €
E0801 Waste Management Plan	-	-	-	-
E0802 Contrib to Other Bodies Waste Management Planning	-	-	-	-
E0899 Service Support Costs	-	-	-	-
E08 Waste Management Planning	-	-	-	-
E0901 Maintenance of Burial Grounds	249,452	249,452	218,506	221,481
E0999 Service Support Costs	77,909	77,909	74,023	74,349
E09 Maintenance of Burial Grounds	327,361	327,361	292,529	295,830
E1001 Operation Costs Civil Defence	350,419	350,419	346,332	334,241
E1002 Dangerous Buildings	-	-	-	-
E1003 Emergency Planning	-	-	-	-
E1004 Derelict Sites	286,406	286,406	278,704	278,704
E1005 Water Safety Operation	160,145	160,145	144,426	144,426
E1099 Service Support Costs	124,507	124,507	118,154	118,488
E10 Safety of Structures and Places	921,477	921,477	887,616	875,859
E1101 Operation of Fire Brigade Service	4,310,048	4,310,048	4,274,722	4,279,693
E1103 Fire Services Training	-	-	-	-
E1104 Operation of Ambulance Service	-	-	-	-
E1199 Service Support Costs	203,996	203,996	189,926	187,860
E11 Operation of Fire Service	4,514,044	4,514,044	4,464,648	4,467,553
E1201 Fire Safety Control Cert Costs	-	-	-	-
E1202 Fire Prevention and Education	422,759	422,759	311,327	311,327
E1203 Inspection & Monitoring of Commercial Facilities	-	-	-	-
E1299 Service Support Costs	103,020	103,020	63,921	64,097
E12 Fire Prevention	525,779	525,779	375,248	375,424
E1301 Water Quality Management	40,000	40,000	40,000	35,000
E1302 Licensing and Monitoring of Air and Noise Quality	-	-	-	-
E1399 Service Support Costs	627,040	627,040	606,134	607,122
E13 Water Quality, Air and Noise Pollution	667,040	667,040	646,134	642,122
E1401 Agency & Recoupable Service	-	-	-	-
E1499 Service Support Costs	258	258	255	257
E14 Agency & Recoupable Services	258	258	255	257
E1501 Climate Change and Flooding	573,492	573,492	413,428	422,428
E1599 Service Support Costs	25,613	25,613	23,638	23,677
E15 Climate Change and Flooding	599,105	599,105	437,066	446,105
Division E Total	15,605,204	15,605,204	16,825,103	14,858,729

Table F - Income

Division E - Environmental Services				
Income by Source	2022		2021	
	Adopted by Council €	Estimated by Chief Executive €	Adopted by Council €	Estimated Outturn €
Government Grants & Subsidies				
Housing, Local Government & Heritage	-	-	-	-
Social Protection	-	-	-	-
Defence	164,000	164,000	164,000	164,000
Climate Action & Communications Networks	305,010	305,010	319,000	319,000
Other	2,500	2,500	3,000	2,500
Total Government Grants & Subsidies	471,510	471,510	486,000	485,500
Goods & Services				
Domestic Refuse Charges	-	-	-	-
Commercial Refuse Charges	-	-	-	-
Landfill Charges	-	-	-	-
Fire Charges	300,000	300,000	250,000	250,000
Superannuation	176,070	176,070	167,094	167,094
Agency Services & Repayable Works	-	-	-	-
Local Authority Contributions	-	-	-	25,974
Other income	2,648,210	2,648,210	4,854,660	2,878,432
Total Goods & Services	3,124,280	3,124,280	5,271,754	3,321,500
Division E Total	3,595,790	3,595,790	5,757,754	3,807,000

Service Division F

Recreation & Amenity - Delivery in 2021

1,238



The Cruinniú a nÓg YouTube channel received over 1,238 views within the first 28 days with a watch time of 49.3 hours

The Type Trial festival took place from August to October showcasing the work of **30** artists across 21 internal and external sites

30



1,700



Total number of children who participated in the libraries annual Summer Reading challenge



1,000

Total number of laptops currently on loan to Meath Schools and community groups



100

Over 100 arts groups, community organisations, schools and artists have been supported under the 2021 Arts Grants Awards & Bursaries Schemes



comhairle chontae na mí
meath county council

SERVICE DIVISION F

Recreation & Amenity

LIBRARY SERVICES

Achievements, 2021:

In addition to delivering the core lending, reference, IT, study, local studies and schools service library staff across the branch network also:

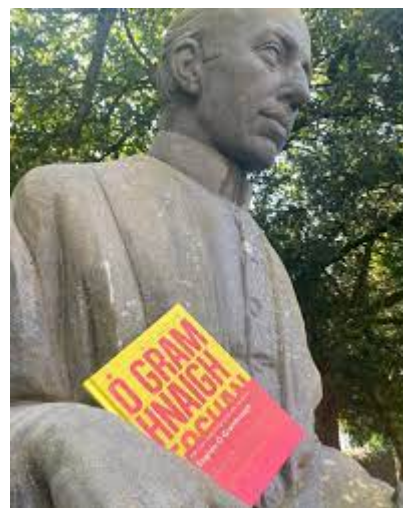
- Secured funding from the DRCD Capital Grants scheme to purchase an E-Delivery vehicle.
- Procured and established a new storage facility for the county library service in Kells.
- Progressed the design of the new Trim Library and Cultural Centre



Pictured at the sod turning in Trim Library and Cultural Centre: Minister for Rural and Community Development, Heather Humphreys TD, Cathaoirleach of Meath County Council, Cllr. Sean Drew, Cathaoirleach of Trim MD, Cllr. Joe Fox and Chief Executive, Jackie Maguire.

- Progressed the design of the new Bettystown Library and Community Facility.
- Progressed the design of the new County Archive building.
- Secured funding from HEAnet to roll out Eduroam in all branch libraries. This is a federated service that allows students and researchers connect, via the branch Wi-Fi service, to their home institutions' network.
- Secured funding under the Dormant Accounts Funding 2021 for a Sensory Pod at Dunshaughlin library, the implementation of a 'Toys, Technology and Training' initiative and a DEIS schools initiative.
- Secured the appointment of the first fulltime County Archivist.
- Secured funding from the Heritage Council, through the Heritage Officer to engage an archivist to work on archives relating to the Industrial Heritage of County Meath.
- Secured funding to deliver library led initiatives under the National Integration programme. Funding was secured with the support of the Community Department.

- Secured funding from the national Healthy Ireland programme to provide equipment for outdoor community meetings at Ashbourne library.
- Established a strong and vibrant presence for Trim library at the new temporary premises in Mill Street.
- Selected by the LGMA to participate in a new pilot programme 'Public Libraries Design Thinking'
- Meath is the pilot county for an LGMA Facebook funded pilot on Digital Literacy for Library Staff. The first tranche of staff training was delivered in 2021, with Meath staff now tasked with devising training modules suitable for delivery to staff nationwide.
- Delivered the 2021 annual plan for **Creative Ireland** in partnership with national, local and community stakeholders.
- Continued the very successful library led Writer-in Residence programme with Fiona Sherlock's residency, supported by Creative Ireland.
- Devised and delivered **Cruinniú na nÓg** on June 12th, in partnership with national, local and community stakeholders. The programme was delivered fully online through a dedicated Meath Cruinniú na nÓg YouTube channel in partnership with the Council's Arts Office. The programme was delivered through a mix of live and pre-recorded events. The programme was a major success with total views of 1,238 views within the first 28 days and with a watch time of 49.3 hours.
- Decade of Centenaries – published '*Eamon Duggan: Counsel to the Revolution*' to mark the centenary of the signing of the Treaty.
- Published '*Curraghtown: July 2022*' to promote our understanding of events during the Civil War in Meath.
- Managed the delivery of the annual 'Decade of Centenaries' programme through the wider culture team.
- Secured by donation the archives of 'The Meath Chronicle'.
- Published 'Class Novels: A Guide for Primary School Teachers'
- Published 'The Life and Legacy of Eoghan O' Growney' by Tracey Ní Mhaonaigh
- The 'Laptop for Loan' initiative funded by Facebook was shortlisted for a Chambers Ireland Award.
- Delivered a range of online events under the **Healthy Ireland @your library** initiative and supported the programming of the newly appointed Healthy Ireland Co-ordinator.
- Supported the delivery of the **Colmcille 1500** programme with the production of a Colmcille Education Pack, and the delivery of an innovative Colmcille Digital School Folklore project across 5 primary schools. This project was delivered in partnership with Donegal County Council, Sligo County Council and the Nerve Centre in Derry.
- The annual '**Children's Book Festival**' in October was delivered fully online for the second year running. Extensive range of live and pre-recorded author readings were programmed enabling thousands of children access online library events through their local schools.



- 1,700 children participated in the annual Summer Reading Challenge despite the restrictions which prevented in-branch events or activities.
- Received the **Right to Read Award** from the LGMA.
- Delivered the '**Little Library Book Bag**' initiative to participants in the Early Childcare and Education (ECCE) sector.
- Delivered local programming for the **Ireland Reads** campaign.
- Delivered online programming for '**Science Week**'.
- Delivered a range of online material for **Culture Night** and supported the Arts Office with the delivery of the Poetry Town programme in Dunshaughlin.
- Secured funding from Facebook Community Action grant scheme to deliver STEAM events for adults and families.

Covid -19 – Response

- Promoted online offering, eBooks, eMagazines and eLearning resources.
- Redeveloped the Meath County Library website www.meathlibraries.ie
- Created a continuous stream of new online content via author readings, staff workshops and storytimes etc.
- Programming continued online – Cruinniú na nÓg, Summer Stars, Children's Book Festival
- 'Laptop for Loan' scheme to second-level students. Almost 1,000 laptops are on loan to date and the take-up from schools and community groups is very high. All schools involved in the scheme renewed their loans for 2021.
- Established the Music Instrument lending scheme across the branch network in partnership with Music Generation. The instrument bank is based in Ashbourne library and it is complemented by a wide range of newly purchased AV and book related material.
- Provided 'Magic Tables' at Navan and Trim public nursing homes. This digital equipment enables families and staff to interact with patients suffering from dementia.
- Supported Hinterland to deliver an online decade of centenaries themed lecture series. The festival was delivered fully online in January 2021.
- Devised and delivered the 'Virtual Portrait Project' – 'A Great Reader of a Great Age' to support older persons who were cocooning.
- Delivered the local 'Grow it Forward' campaign. This was the first year of the national campaign and libraries reached out to many new patrons in the course of the project.

Initiatives and Challenges, 2022

- Develop service in accordance with priorities set out in national library strategy *Libraries Ireland 2018 – 2022* and the *Living with Covid* plan at national level.
- Promote the new 'My Open Library' facilities at Kells, Nobber and Slane.
- Support staff and public in the migration to Spydus the new national library IT management system.
- Commence plans to design, re-configure and extend Navan branch library to integrate the former HQ space.
- Further progress the design of the new County Archive building.

- Further progress the interior design of the Trim Library and Cultural Centre.
- Implement the 5-year strategy for the county under the **Creative Ireland** initiative in partnership with national, local and community stakeholders.
- Develop and deliver appropriate programme of events to commemorate events as part of the **Decade of Centenaries** in partnership with national, local and community stakeholders. The centenary of the founding of the Garda Síochána will be commemorated in 2022.
- Progress detailed design of the flagship Bettystown branch development as part of an overall plan to deliver a library and community facility for East Meath.
- Provide minor upgrades to Duleek and Dunshaughlin libraries.

ARTS OFFICE



The Meath County Council Arts mission statement as per the County Arts Development Plan 2019 – 2024 is:

To work closely with artists, individuals and communities to increase access to, awareness of and participation in the arts across all disciplines and sectors of society. To act as a facilitator for arts organisations and play a major role in the development of good practice for the county. To provide opportunities across disciplines intended to support the Local Authority policy of supporting quality artistic endeavour, provision of employment opportunities for artists and long-term sustainability and durability for the arts in the county.

In implementing key aims and objectives as per the County Arts Development Plan, the Arts Office continues to adapt and respond to the circumstances presented by Covid 19. It has adopted a proactive approach in reimagining the 2021/22 Arts Programme and is currently engaging with creative partners, artists, groups, organisations and the greater creative community. It has also engaged with the DTCAGSM, the Arts Council and Creative Ireland in Covid response development.

Achievements in 2021

The challenges presented by Covid have continued in 2021 and in some ways have been greater with an initial optimism towards a return to work by creatives diminishing as restrictions rolled on. The Meath Artists Meet Up Network (MAMU), now with a membership of 100+ professional artists, proved an invaluable way to connect, engage and be informed by artists of their issues and needs. Informed by this the Arts Office:

- Continued to provide 1-1 mentoring and CPD exchanges via phone or Zoom
- Issued a quarterly MAMU Newsletter with monthly opportunities updates.
- Expanded the Associate Artist and small commissions/in development programme
- Revised the Arts Grants criteria and application process moving applications online.
- Introduced several new funding initiatives including RE: Form - an initiative that aims to directly respond to the current challenges faced by the local arts sector through digital conversion.
- Introduced the Digital Equipment Purchase Scheme.
- Expanded the Professional Artists Development Fund to twice yearly.
- Introduced the new 'Sing Ireland' Bursary Award.

- Expanded the Words Ireland Mentorship Award to 2 awardees in 2021.
- Delivered the Centre Cultural Irlandais Partnership Residency Award
- Participated in Platform 31, a nationwide collaborative initiative between the Arts Council and the Association of Local Authority Arts Officers which is intended to support one artist from each local authority in the development of their artistic practice through the provision of funding and a professional network.

Over 100 arts groups, community organisations, schools and artists have been supported under the 2021 Arts Grants Awards & Bursaries Schemes.

A further suite of artists commission and performance (live & recorded) supports were also introduced with the objective of supporting artists in the creation and presentation of work whilst continuing to engage with our creative communities & audiences. These included:

- Toradh Gallery Ashbourne & Toradh2 Kells online exhibition programme
- Ceol Comfort – music series
- Colmcille 1500 Co Club 2 short film commissions as a contemporary response to the life and Legacy of Colmcille with over 10k views to date.
- Poetry Town– as part of a national initiative in collaboration with Poetry Ireland and Co Library Services, Dunshaughlin being the inaugural Poetry Town for Meath. A series of twelve spoken word, dance and music videos filmed and released as part of the Culture Night celebrations.

Implementation of the DTCAGSM Local Live Performance Scheme in Meath

Representing significant investment in and support of the professional arts performance and production sector in Meath under this scheme, the following were delivered:

- Equinox Live event ***'Until The Harvest Comes'*** at Dunderry Park featuring an eclectic mix of performances by musicians and poets.
- Equinox film – ***'Until the Dew Falls'*** filmed with support of the OPW at Loughcrew Cairns and at Loughcrew Gardens, featuring performances by some of Meath's finest musicians, writers, poets and performers. *Until the Dew Falls* was premiered with a screening at the live Dunderry Park event and premiered online by Hotpress Magazine across all their platforms.
- **All Rise – Sessions @ the Courthouse** – a filmed series of performances by Meath musicians, writers & actors.
- **Emerald Fires** – support of the music and traditional dance element of the Circus Gerbola/Duffys Circus extravaganza at Slane Castle.
- **OutWall** by Selina Daniels – contemporary live in-person dance event at Solstice
- **Theatre Day** at Hinterland Festival



All of the above initiatives are intended to provide alternative means of supporting those artists and creatives who have seen their work, performances and engagements cancelled or postponed for the foreseeable future, whilst providing greater access to the wider community to quality creative and

cultural experiences. All the artists under the initiatives above were paid a fee for their work or for rights to broadcast.

Tea and Chats and Tunes - Connecting Nursing Home Residents & their Families

'Tea, Chats and Tunes' is a project partnership between Meath County Council Arts Office & Kids' Classics, supported by funding from Meath County Council, Creative Ireland, the Arts Council and the Age-Friendly Meath Keep Well Fund and delivered through healthcare partners in County Meath.

'Tea, Chats and Tunes' was developed in response to the need to find new ways of connecting some of the most vulnerable members of our communities isolating in nursing homes with their families at home or abroad through an opportunity to engage in a live cultural experience in a safe way.

Through the support of technology, a virtual zoom room supports families to connect with their loved ones in a meaningful way, regardless of where they are located. Music, conversation, and memories are shared while offering an opportunity for new ones to be made through a specifically designed framework that supports person-centred music engagement.

This project is being delivered by Kids' Classics in all nursing homes across the county.

Kells Creative Place-making

Hinterland Festival successfully took place between September 9-12, with 34 events across 3 venues. The Type Trail Festival took place from August to October showcasing the work of 30 artists across 21 internal and external sites. While Guth Gafa 2021 is currently at planning stage.

A Strategic Review of the Hinterland Festival was undertaken with funding support from the Arts Council. A new Festival Consortium has been established - Hinterland, Type Trail and Guth Gafa and application made to the Arts Council Capacity Building Support Scheme (successful) for funding assistance to engage professional services to build capacity and capability and provide shared executive support.

Several visiting film production companies have been hosted at the Courthouse as production hubs for varying durations. When restrictions allowed, several artists were provided with work-in-development rehearsal & workshop space. Capital works as funded under the RRDF programme are on-going.

Children & Young Person's Programmes

New strategic partnership with Droichead Arts Centre whose recent Strategy Document considers East Meath as part of their catchment area. This has enabled us to expand the range and reach of our C&YP programme in that area. Projects included Leanbh Festival, Back in The Grove programme & the Colaiste na hInse Clós Arts Festival. It has also enabled preparatory work & research into the establishment of a youth theatre at the Mosney direct provision centre.

Working with the County Library Service events team has enabled us to deliver a wide range of projects, in person & online to communities across the county. The Library service has proved invaluable in facilitating and managing this blended programme.

Act Out Youth Theatre continues to flourish despite the challenges presented by Covid &, under the expert directorship of Anthony Kinahan has delivered an exciting blend of online & in-person projects managing even to extend numbers and workshop sessions.

Bóinn: The River Goddess by Meath singer Róisín Ní Ghallóglaigh project. Originally composed in 2020 as part of the Songs for Our Children Project. Bóinn is about the Boyne River and tells of its history, mythology, geography and environmental importance. To accompany the song, we commissioned an animated video which combined the visual aspects of the song with natural soundscapes and found sounds in nature. A schools 'making of' video was also recorded with the singer, animators and sound recordist which proved very popular.



Cruinniú na nÓg 2021 Delivered in partnership with County Library Services, included a blended programme of in-person and online activities with over 40+ events taking place for children and young people 2 – 18yrs. The programme encompassed a wide range of activities and disciplines – Arts, Heritage & STEM - and contained a balance of passive and interactive events. Some events took place on the day only, others had a workshop/engagement element running over a six-week Cruinniú lead in time. Public events attendances were 463 with school's engagement programme accommodating 513 participants. The dedicated Cruinniú na nÓg Meath YouTube channel received over 1500 views.

MAO/ Kid's Classics commission of filmed interactive fun 'sing-a-longs' for younger children, which included Irish language, ISL and captioned recordings.

Music Generation Meath On-going liaison with Music Generation Meath regarding the roll out of MGM programme in Covid 19 context. MGM continues to go from strength to strength. The Music Development Officer has successfully devised and implemented a number of exciting and innovative programmes.

Creative Ireland Continued implementation of the Creative Ireland Meath Five Year Strategy in collaboration with Cultural Services Team.

Initiatives and Challenges for 2022

Covid 19 has presented serious challenges to the Arts industry and it is widely recognized as being one of the sectors most badly affected by it. The Arts Office understands the difficulties artists, creatives and the arts communities face in the current circumstances and the Office continues to provide valuable support throughout the county during this time.

The Arts Office has reached out to creative and artistic communities and has developed a series of initiatives to support, highlight and celebrate creativity in Meath.

- Deliver actions as per the four strategic priorities of County Arts Development Plan 2019 – 2024.
- Work with LMETB in roll-out of Music Generation Meath.

- Expand the MAMU artists support initiative 2022.
- Expand Arts Office online programme – *Theatre Tuesday, Ceol Comfort & Toradh online*.
- Pilot a series of in-person events, such as All Rise – Sessions @ the Courthouse live performance event.
- Expand small commissions programme.
- Expand Associate Artists programme.
- Youth Arts – with our partners, including DAC, devise and implement youth arts programmes in the areas of Visual Arts, Theatre and Film.
- Expand range of MCC Arts Grants, Awards & Bursaries Schemes.
- DOC - Develop a series of Civil War commemorative events.
- Continue to develop the Kells Creative Placemaking Project.
- Continue to attract film production companies and arts organisations to KCP.
- Adapt key arts office events – e.g. Mary Lavin Season, Bealtine Festival to evolving circumstances.
- Manage and implement Private Developer Public Art Project programme.
- Manage Meath County Council’s Public Art commission programme associated with new capital developments e.g. housing
- Work with key stakeholders and partners in adapting to circumstances and the delivery of strategic events across the county. These include: Hinterland Festival, Guth Gafa International Documentary Film Festival, Kells Type Trail, DAC, SOFFT Nights and Another Love Story.
- Continue restoration, conservation and re-framing of MCC Art Collection, curate and re-hang in Council buildings throughout the county.
- Implement key elements of the Creative Ireland Meath 5 Year Strategy in partnership with Cultural Services Team.
- Devise and deliver FEACH artists CPD programme.
- Continued development of Training Notes programme.
- With a view to the future, continue development of international programme and working relationships e.g., CCI Paris and IAC New York.

TABLE B: Expenditure and Income for 2022 and Estimated Outturn for 2021

Division & Services	2022				2021			
	Expenditure		Income		Expenditure		Income	
	Adopted by Council €	Estimated by Chief Executive €	Adopted by Council €	Estimated by Chief Executive €	Adopted by Council €	Estimated Outturn €	Adopted by Council €	Estimated Outturn €
F Recreation and Amenity								
F01 Leisure Facilities Operations	944,801	944,801	179,781	179,781	911,916	915,949	148,110	71,110
F02 Operation of Library and Archival Service	4,806,300	4,806,300	96,497	96,497	4,457,537	4,462,011	89,102	89,102
F03 Outdoor Leisure Areas Operations	2,010,064	2,010,064	5,130	5,130	1,910,219	1,910,258	5,021	5,021
F04 Community Sport and Recreational Development	766,216	766,216	11,370	11,370	591,386	591,967	9,841	10,841
F05 Operation of Arts Programme	1,102,007	1,102,007	91,704	91,704	1,043,656	1,232,898	61,363	250,413
F06 Agency & Recoupable Services	3,217	3,217	158,203	158,203	2,711	2,711	451,877	451,877
Division F Total	9,632,605	9,632,605	542,685	542,685	8,917,425	9,115,794	765,314	878,364

Table F - Expenditure

Division F - Recreation and Amenity

Expenditure by Service and Sub-Service	2022		2021	
	Adopted by Council €	Estimated by Chief Executive €	Adopted by Council €	Estimated Outturn €
F0101 Leisure Facilities Operations	533,727	533,727	523,731	526,631
F0103 Contribution to External Bodies Leisure Facilities	148,000	148,000	148,000	148,000
F0199 Service Support Costs	263,074	263,074	240,185	241,318
F01 Leisure Facilities Operations	944,801	944,801	911,916	915,949
F0201 Library Service Operations	3,129,983	3,129,983	2,944,491	2,944,491
F0202 Archive Service	-	-	-	-
F0204 Purchase of Books, CD's etc.	360,000	360,000	300,000	300,000
F0205 Contributions to Library Organisations	-	-	-	-
F0299 Service Support Costs	1,316,317	1,316,317	1,213,046	1,217,520
F02 Operation of Library and Archival Service	4,806,300	4,806,300	4,457,537	4,462,011
F0301 Parks, Pitches & Open Spaces	1,823,102	1,823,102	1,810,825	1,810,825
F0302 Playgrounds	-	-	-	-
F0303 Beaches	175,000	175,000	88,652	88,652
F0399 Service Support Costs	11,962	11,962	10,742	10,781
F03 Outdoor Leisure Areas Operations	2,010,064	2,010,064	1,910,219	1,910,258
F0401 Community Grants	158,000	158,000	115,500	115,500
F0402 Operation of Sports Hall/Stadium	-	-	-	-
F0403 Community Facilities	215,000	215,000	170,000	170,000
F0404 Recreational Development	240,000	240,000	164,000	164,000
F0499 Service Support Costs	153,216	153,216	141,886	142,467
F04 Community Sport and Recreational Development	766,216	766,216	591,386	591,967
F0501 Administration of the Arts Programme	310,322	310,322	263,833	452,883
F0502 Contributions to other Bodies Arts Programme	680,940	680,940	677,205	676,986
F0503 Museums Operations	-	-	-	-
F0504 Heritage/Interpretive Facilities Operations	-	-	-	-
F0505 Festivals & Concerts	-	-	-	-
F0599 Service Support Costs	110,745	110,745	102,618	103,029
F05 Operation of Arts Programme	1,102,007	1,102,007	1,043,656	1,232,898
F0601 Agency & Recoupable Service	-	-	-	-
F0699 Service Support Costs	3,217	3,217	2,711	2,711
F06 Agency & Recoupable Services	3,217	3,217	2,711	2,711
Division F Total	9,632,605	9,632,605	8,917,425	9,115,794

Table F - Income

Division F - Recreation and Amenity

	2022		2021	
	Adopted by Council €	Estimated by Chief Executive €	Adopted by Council €	Estimated Outturn €
Income by Source				
Government Grants & Subsidies				
Housing, Local Government & Heritage	-	-	-	-
Education	-	-	-	-
Media, Tourism, Art, Culture, Sport & the Gaeltacht	-	-	-	-
Social Protection	-	-	-	-
Library Council	-	-	-	-
Arts Council	85,000	85,000	55,000	85,000
Transport	-	-	-	-
Community, Rural Development & the Islands	-	-	-	-
Other	30,000	30,000	-	-
Total Government Grants & Subsidies	115,000	115,000	55,000	85,000
Goods & Services				
Recreation/Amenity/Culture	117,000	117,000	117,000	40,000
Superannuation	139,094	139,094	132,003	132,003
Agency Services & Repayable Works	-	-	-	-
Local Authority Contributions	2,000	2,000	2,000	2,000
Other income	169,591	169,591	459,311	619,361
Total Goods & Services	427,685	427,685	710,314	793,364
Division F Total	542,685	542,685	765,314	878,364

Service Division G

Agriculture, Education, Health & Welfare - Delivery in 2021

The new National Dog Licence System continues to result in increased payment of licences fees.



The Council continues to operate under a Service Level Agreement with the Food Safety Authority of Ireland (FSAI).



Meath County Council continues to provide veterinary inspection services for the enforcement of food legislation and protection of consumer health and interest.



comhairle chontae na mí
meath county council

SERVICE DIVISION G

Agriculture, Education, Health and Welfare

Meath County Council continues to provide veterinary inspection services for the enforcement of food legislation and protection of consumer health and interest.

The Council continues to operate under a Service Level Agreement with the Food Safety Authority of Ireland (FSAI).



The Council also provides services under the Control of Dogs and Control of Horses Act. In this context:

- The new National Dog Licence System continues to result in increased payment of licences fees.
- The lease agreement for the provision of a Dog Shelter facility at the Riggins, Dunshaughlin, has been extended until 2027.

TABLE B: Expenditure and Income for 2022 and Estimated Outturn for 2021

Division & Services	2022				2021			
	Expenditure		Income		Expenditure		Income	
	Adopted by Council €	Estimated by Chief Executive €	Adopted by Council €	Estimated by Chief Executive €	Adopted by Council €	Estimated Outturn €	Adopted by Council €	Estimated Outturn €
G Agriculture, Education, Health & Welfare								
G01 Land Drainage Costs	35,522	35,522	35,121	35,121	35,454	35,455	35,115	35,115
G02 Operation and Maintenance of Piers and Harbours	-	-	-	-	-	-	-	-
G03 Coastal Protection	-	-	-	-	-	-	-	-
G04 Veterinary Service	786,115	786,115	465,779	465,779	751,702	753,433	445,280	438,580
G05 Educational Support Services	107,314	107,314	5,500	5,500	106,489	107,291	5,500	5,500
G06 Agency & Recoupable Services	2,575	2,575	-	-	2,553	2,575	-	-
Division G Total	931,526	931,526	506,400	506,400	896,198	898,754	485,895	479,195

Table F - Expenditure

Division G - Agriculture, Education, Health & Welfare

Expenditure by Service and Sub-Service	2022		2021	
	Adopted by Council €	Estimated by Chief Executive €	Adopted by Council €	Estimated Outturn €
G0101 Maintenance of Land Drainage Areas	-	-	-	-
G0102 Contributions to Joint Drainage Bodies	35,000	35,000	35,000	35,000
G0103 Payment of Agricultural Pensions	-	-	-	-
G0199 Service Support Costs	522	522	454	455
G01 Land Drainage Costs	35,522	35,522	35,454	35,455
G0201 Operation of Piers	-	-	-	-
G0203 Operation of Harbours	-	-	-	-
G0299 Service Support Costs	-	-	-	-
G02 Operation and Maintenance of Piers and Harbours	-	-	-	-
G0301 General Maintenance - Coastal Regions	-	-	-	-
G0302 Planned Protection of Coastal Regions	-	-	-	-
G0399 Service Support Costs	-	-	-	-
G03 Coastal Protection	-	-	-	-
G0401 Provision of Veterinary Service	1,099	1,099	415	415
G0402 Inspection of Abattoirs etc	358,912	358,912	356,639	356,389
G0403 Food Safety	5,882	5,882	2,544	2,544
G0404 Operation of Dog Warden Service	282,503	282,503	266,161	267,661
G0405 Other Animal Welfare Services (incl Horse Control)	-	-	-	-
G0499 Service Support Costs	137,719	137,719	125,943	126,424
G04 Veterinary Service	786,115	786,115	751,702	753,433
G0501 Payment of Higher Education Grants	-	-	-	-
G0502 Administration Higher Education Grants	-	-	-	-
G0503 Payment of VEC Pensions	-	-	-	-
G0504 Administration VEC Pension	-	-	-	-
G0505 Contribution to Education & Training Board	-	-	-	-
G0506 Other Educational Services	-	-	-	-
G0507 School Meals	11,000	11,000	11,000	11,000
G0599 Service Support Costs	96,314	96,314	95,489	96,291
G05 Educational Support Services	107,314	107,314	106,489	107,291
G0601 Agency & Recoupable Service	-	-	-	-
G0699 Service Support Costs	2,575	2,575	2,553	2,575
G06 Agency & Recoupable Services	2,575	2,575	2,553	2,575
Division G Total	931,526	931,526	896,198	898,754

Table F - Income

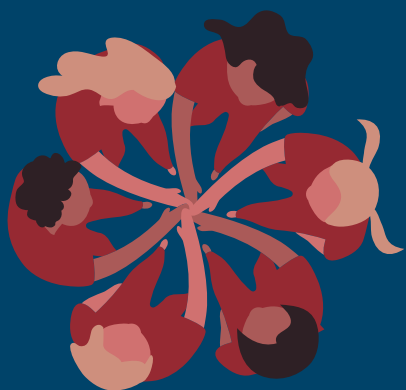
Division G - Agriculture, Education, Health & Welfare

Income by Source	2022		2021	
	Adopted by Council €	Estimated by Chief Executive €	Adopted by Council €	Estimated Outturn €
Government Grants & Subsidies				
Housing, Local Government & Heritage	8,000	8,000	10,000	8,000
Media, Tourism, Art, Culture, Sport & the Gaeltacht	-	-	-	-
Education	-	-	-	-
Transport	-	-	-	-
Food Safety Authority of Ireland	183,600	183,600	183,600	183,600
Agriculture & Marine	-	-	-	-
Other	5,500	5,500	5,500	5,500
Total Government Grants & Subsidies	197,100	197,100	199,100	197,100
Goods & Services				
Superannuation	9,900	9,900	9,395	9,395
Agency Services & Repayable Works	-	-	-	-
Local Authority Contributions	-	-	-	-
Other income	299,400	299,400	277,400	272,700
Total Goods & Services	309,300	309,300	286,795	282,095
Division G Total	506,400	506,400	485,895	479,195

Service Division H

Miscellaneous - Delivery in 2021

Funding received for the establishment of a Women's Caucus



The Corporate Affairs and Governance Department includes:



- Providing services to the Elected Members
- Management of Meetings
- Preparation of the Register of Electors
- Delivery of Services to the Public
- Safety and Health Procedures

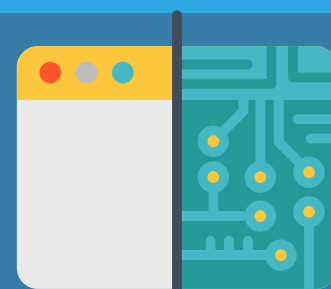
Continued preparation for an upgrade of the CRM System, with completion of the tender process and appointment of the service provider



In 2021, the Council hosted a civic reception to recognise the achievements of the Meath Minor Football Teams

1

Piloting of an electronic system for the completion of on-site risk assessment and temporary traffic management



comhairle chontae na mí
meath county council

SERVICE DIVISION H

Miscellaneous Services

Introduction

The Corporate Affairs and Governance Department works within a framework of democratic principles, providing services to the Elected Members, the management of meetings and the preparation of the Register of Electors. It also facilitates the delivery of services to the public, through our customer services team, safety and health procedures and supports effective corporate governance practices. It also manages corporate communications, events, twinning and relations with a number of organisations and relevant bodies.

Achievements in 2021

Elected Council

- Processed all administration regarding meetings of the Council and the six Municipal Districts, including arrangements in response to the Covid-19 pandemic and in line with the public health guidance.
- Revised the Council's Standing Orders, which now also provide for remote meetings.
- Managed the on-going capture of information, quality control, publication and distribution of the Register of Electors and the Marked Register for the Local Elections.
- Facilitated Elected Members in relation to their democratic role at full Council and through the Municipal District structures. Provided organisational and meeting administration role for the Special Planning Meetings.
- Administered the Municipal District Allocation Scheme.
- Implemented the provisions of the Ethical Framework for the Local Government Service as it applies to Elected Members and staff.
- Successful bid for funding the establishment of a Women's Caucus for the elected members of the Council. The Caucus is receiving facilitation to establish its terms of reference and agree its working arrangements.

Customer Service, Communications and Events

- Continued to develop the customer service delivery model and prepared for an upgrade of the CRM system, with completion of the tender process and appointment of the service provider.
- Administered the legislative provisions concerning Freedom of Information and Access to Information on the Environment and the office of the Ombudsman.
- Adoption of Council's second Language Scheme and administered the Official Languages Act as it applies to the local authority.
- Launched a number of communications campaigns to support corporate objectives and in line with the Council's communications strategy
- Organised a number of corporate events and delivered online events in line with the public health restrictions, including a Civic Reception.



Meath Minor Football Team Civic Reception held in the Solstice Arts Centre, Navan

Corporate Publications

- Produced and published the 2019 Annual Report for Meath County Council, the Annual Service Delivery Plan and other corporate publications.

Corporate Governance and Administration

- Coordinated the implementation of the corporate Risk Management Policy, the meetings of the Risk Committee, the completion of the Risk Registers.
- Facilitate the work of the Audit Committee, support and administer its four meetings per year.
- Administer various corporate functions and responsibilities, including the provision of the County Coroner service.

Data Protection and Records Management

- Oversee the Council's compliance with its GDPR obligations through the Data Protection Unit and continued to update corporate policies and procedures on data protection and security.
- Provided GDPR and FOI awareness training for designated officers.

Occupational Safety and Health

It is policy to comply with our statutory obligations (Safety, Health and Welfare at Work Act, 2005 and all other applicable legislation) and to continually improve performance of occupational safety and health (OSH) management to protect all our employees and other interested parties who may be affected by our activities.

The main achievements in 2021 were:

- Development and implementation of COVID-19 operational procedures and risk assessments across all sections of the Organisation.
- Corporate Safety Management System maintained in line with legislative and guidance with internal OSH audits been undertaken.
- Meath County Council's Fire Service has maintained ISO 45001 Certification and external OSH audits have been undertaken.
- Piloting of an electronic system for the completion of on-site risk assessment and temporary traffic management.

Corporate Projects

Key corporate facilities and construction projects advanced in 2021 were Trim Library & Cultural Centre (construction underway), Porch Fields, Trim (development nearing conclusion), Bettystown Library (design completed), Enfield Community Building (entering construction stage), and St. Patricks Classical School (stabilisation and other works).

Initiatives and Challenges for 2022

In the context of the current economic environment and in accordance with the financial resources allocated by the elected Council, the following activities will be undertaken:

- Continue to implement measures arising from the publication of the Moorhead Report on the Role and Remuneration of Local Authority Elected Members, including the implementation of the new vouched expenses regime for elected members;
- Go-Live with the new Customer Relationship Management (CRM) system, embedding it across all Departments and ensuring seamless customer service to all stakeholders;
- Further improving the Council's Communication activities, by developing more engaging content across a range of platforms;
- Maintain high levels of awareness in the organisation of the importance of data protection and up-date the organisation's Records Management policy;
- Continue to review and improve, where necessary, the corporate governance framework, its policies and procedures, in line with best practice;
- Continue to support the development and review of operational risk assessments, OSH inspections and audits across the Organisation to assist in the continual embedding and improvement of the Corporate Safety Management System.
- Develop a full electronic system for the completion of on-site risk assessment and temporary traffic management and on-site monitoring

TABLE B: Expenditure and Income for 2022 and Estimated Outturn for 2021

Division & Services	2022				2021			
	Expenditure		Income		Expenditure		Income	
	Adopted by Council €	Estimated by Chief Executive €	Adopted by Council €	Estimated by Chief Executive €	Adopted by Council €	Estimated Outturn €	Adopted by Council €	Estimated Outturn €
H Miscellaneous Services								
H01 Profit & Loss Machinery Account	-	-	-	-	-	-	-	-
H02 Profit & Loss Stores Account	-	-	-	-	-	-	-	-
H03 Administration of Rates	10,764,553	10,764,553	80,027	80,027	11,025,998	10,856,285	82,440	83,640
H04 Franchise Costs	339,618	339,618	1,809	1,809	333,509	345,049	1,717	1,717
H05 Operation of Morgue and Coroner Expenses	319,816	319,816	1,031	1,031	286,993	287,009	978	978
H06 Weighbridges	2,640	2,640	-	-	2,631	2,640	-	-
H07 Operation of Markets and Casual Trading	-	-	3,000	3,000	-	-	1,000	2,910
H08 Malicious Damage	-	-	-	-	-	-	-	-
H09 Local Representation & Civic Leadership	3,300,599	3,300,599	406,386	406,386	3,028,678	3,230,598	325,667	325,667
H10 Motor Taxation	1,651,865	1,651,865	101,103	101,103	1,655,752	1,657,960	98,753	98,753
H11 Agency & Recoupable Services	806,680	806,680	5,999,207	5,999,207	807,582	809,470	4,625,099	5,075,099
Division H Total	17,185,771	17,185,771	6,592,563	6,592,563	17,141,143	17,189,011	5,135,654	5,588,764
OVERALL TOTAL	162,310,332	162,310,332	100,808,355	100,808,355	154,685,723	156,455,096	96,424,017	98,194,418

Table F - Expenditure

Division H - Miscellaneous Services

Expenditure by Service and Sub-Service	2022		2021	
	Adopted by Council €	Estimated by Chief Executive €	Adopted by Council €	Estimated Outturn €
H0101 Maintenance of Machinery Service	-	-	-	-
H0102 Plant and Machinery Operations	-	-	-	-
H0199 Service Support Costs	-	-	-	-
H01 Profit & Loss Machinery Account	-	-	-	-
H0201 Purchase of Materials, Stores	-	-	-	-
H0202 Administrative Costs Stores	-	-	-	-
H0203 Upkeep of Buildings, stores	-	-	-	-
H0299 Service Support Costs	-	-	-	-
H02 Profit & Loss Stores Account	-	-	-	-
H0301 Administration of Rates Office	786,373	786,373	839,223	839,223
H0302 Debt Management Service Rates	567,697	567,697	557,053	557,053
H0303 Refunds and Irrecoverable Rates	9,296,126	9,296,126	9,518,020	9,348,020
H0399 Service Support Costs	114,357	114,357	111,702	111,989
H03 Administration of Rates	10,764,553	10,764,553	11,025,998	10,856,285
H0401 Register of Elector Costs	123,096	123,096	122,289	122,289
H0402 Local Election Costs	100,000	100,000	100,000	100,000
H0499 Service Support Costs	116,522	116,522	111,220	122,760
H04 Franchise Costs	339,618	339,618	333,509	345,049
H0501 Coroner Fees and Expenses	314,392	314,392	282,156	282,156
H0502 Operation of Morgue	-	-	-	-
H0599 Service Support Costs	5,424	5,424	4,837	4,853
H05 Operation of Morgue and Coroner Expenses	319,816	319,816	286,993	287,009
H0601 Weighbridge Operations	1,500	1,500	1,500	1,500
H0699 Service Support Costs	1,140	1,140	1,131	1,140
H06 Weighbridges	2,640	2,640	2,631	2,640
H0701 Operation of Markets	-	-	-	-
H0702 Casual Trading Areas	-	-	-	-
H0799 Service Support Costs	-	-	-	-
H07 Operation of Markets and Casual Trading	-	-	-	-
H0801 Malicious Damage	-	-	-	-
H0899 Service Support Costs	-	-	-	-
H08 Malicious Damage	-	-	-	-

Table F - Expenditure

Division H - Miscellaneous Services

Expenditure by Service and Sub-Service	2022		2021	
	Adopted by Council €	Estimated by Chief Executive €	Adopted by Council €	Estimated Outturn €
H0901 Representational Payments	1,059,492	1,059,492	1,048,240	1,048,240
H0902 Chair/Vice Chair Allowances	78,000	78,000	78,000	78,000
H0903 Annual Allowances LA Members	350,000	350,000	300,000	300,000
H0904 Expenses LA Members	78,388	78,388	78,531	78,132
H0905 Other Expenses	24,000	24,000	24,000	24,000
H0906 Conferences Abroad	12,000	12,000	12,000	12,000
H0907 Retirement Gratuities	141,650	141,650	141,650	141,650
H0908 Contribution to Members Associations	20,500	20,500	19,500	19,500
H0909 General Municipal Allocation	600,000	600,000	400,000	600,000
H0999 Service Support Costs	936,569	936,569	926,757	929,076
H09 Local Representation & Civic Leadership	3,300,599	3,300,599	3,028,678	3,230,598
H1001 Motor Taxation Operation	676,278	676,278	700,719	700,719
H1099 Service Support Costs	975,587	975,587	955,033	957,241
H10 Motor Taxation	1,651,865	1,651,865	1,655,752	1,657,960
H1101 Agency & Recoupable Service	47,475	47,475	47,475	47,475
H1102 NPPR	99,463	99,463	127,422	127,422
H1199 Service Support Costs	659,742	659,742	632,685	634,573
H11 Agency & Recoupable Services	806,680	806,680	807,582	809,470
Division H Total	17,185,771	17,185,771	17,141,143	17,189,011
OVERALL TOTAL	162,310,332	162,310,332	154,685,723	156,455,096

Table F - Income

Division H - Miscellaneous Services				
Income by Source	2022		2021	
	Adopted by Council €	Estimated by Chief Executive €	Adopted by Council €	Estimated Outturn €
Government Grants & Subsidies				
Housing, Local Government & Heritage	4,308,359	4,308,359	3,463,825	3,463,825
Agriculture & Marine	-	-	-	-
Social Protection	-	-	-	-
Justice	-	-	-	-
Other	-	-	-	-
Total Government Grants & Subsidies	4,308,359	4,308,359	3,463,825	3,463,825
Goods & Services				
Superannuation	133,010	133,010	126,229	126,229
Agency Services & Repayable Works	-	-	-	-
Local Authority Contributions	-	-	-	-
NPPR	300,000	300,000	300,000	750,000
Other income	1,851,194	1,851,194	1,245,600	1,248,710
Total Goods & Services	2,284,204	2,284,204	1,671,829	2,124,939
Division H Total	6,592,563	6,592,563	5,135,654	5,588,764
OVERALL TOTAL	100,808,355	100,808,355	96,424,017	98,194,418

Service Division J

Finance - Delivery in 2021



3,467

Tenants accruing rent at present

Through the rates wavier the Council have supported over 2,000 businesses and waived rates to the value of €10m by year end.



2,000 | **€10m**

Over 80 fully completed applications have been received and over 26 new home loans have been drawn down totaling:



€5.2m

The Council will have processed in excess of 1,600 requests for discharge and exemption certificates



Between Phase 1 and 2 of the Small Business Assistance Scheme for Covid the Council processed 270 successful applications totalling:

€1,035,000



comhairle chontae na mí
meath county council

SERVICE DIVISION J

FINANCE

Introduction

The first quarter of 2021 saw the Finance section prepare and complete the 2020 Annual Financial Statement, issue the 2021 rates demands and continue day to day work in its accounts payable, procurement, rents, loans and NPPR sections.

COVID-19 continued to impact and alter the focus of the finance teams throughout 2021 as we responded to the continuing government schemes and incentives aimed at supporting the business community, individuals and the wider community during the pandemic. These supports included the commercial rates waivers, SBASC (Small Business Assistance Scheme) mortgage repayment breaks and rent adjustments.

As well as processing and implementing the above measures the Finance Department continued to focus its efforts on effective expenditure controls with the overall objective of ensuring that the Council operates within its allocated Budget.

Achievements in 2020

Accounts Payable

- Accounts Payable administered payments to the value of €184m in the 12 months ended 5th November 2021. This included over 12,500 transactions totalling €155m being processed by the Invoice Processing Team.
- 2 projects within the Agresso MS4 system were undertaken and completed successfully this year. They were in relation to our SEPA arrangements and eProfessional Services Withholding Tax.
- Regular monitoring and reporting continues to ensure compliance with Prompt Payment legislation.

Procurement

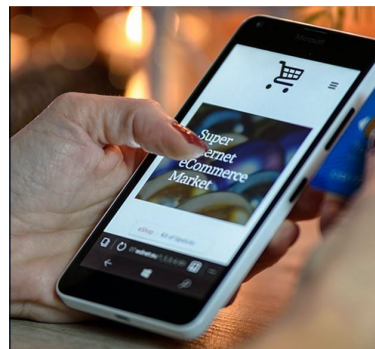
- The Procurement Department continues to support, promote and guide the Corporate body in all aspects relating to Procurement.
- Procurement actively manage many central contracts and provide administration support for systems such as SupplyGov and e-Tenders
- Procurement is an integral part of the purchase to pay cycle, providing a management overview function for all procurement related acquisitions.

Commercial Rates

- Government support has continued through 2021 with a revised commercial rates waiver scheme for Q1 to Q3 and a further targeted rates waiver for Q4 which was announced in the National Budget on October 12th.
- Through the rates waiver Meath County Council have supported over 2,000 businesses and waived rates to the value of €10m by the end of the year.

Small Business Assistance Scheme for Covid (SBASC)

- The SBASC was introduced by the Government to give grants to businesses who were not eligible for the Government's COVID Restrictions Support Scheme (CRSS), the Fáilte Ireland Business Continuity grant or other direct sectoral grant schemes. This scheme aimed to help businesses with their fixed costs, for example, rent, utility bills, security. Between Phase 1 and 2 of the scheme Meath County Council processed 270 successful applications totaling €1,035,000



Rents

- Bi-annual statements are issued to all tenants. This enables tenants to monitor and confirm their payments. Tenants continue to submit rent review forms and assessments are ongoing for tenants with changing circumstances.
- Currently 3,467 tenants accruing rent at present.

Loans

- The Loans team has been very proactive engaging with customers and dealing with enquiries and adjustments to loan account repayments. 44 customers availed of the mortgage repayment breaks.
- Over 80 fully completed applications have been received and over 26 new home loans have been drawn down totalling €5.2M

Non Principal Private Residence (NPPR)

- The service of providing NPPR compliance and exemption certificates is a sizeable task as these are being sought for all residential property sales, regardless of whether the property is liable or not.
- Despite Covid-19 the housing market remained buoyant during 2021 and Meath County Council will have processed in excess of 1,600 requests for discharge and exemption certificates. It should be noted that the number of liable properties is diminishing and the income from the NPPR will decrease in time
- As of August 2021, the 2009 liability has expired and from 1st April 2022 the 2010 liability will expire. This will lead to a reduction from €7,230 to €5,160 (€3,900 reduction) for a liable property.

Initiatives and Challenges for 2021

A new Payment App is currently being rolled out which will enable Rents, Loans and rates customers to pay via their smart device or PC. It will also have the facility for customer to view and download a statement of account.

Statutory Tables	Page
Table C – Calculation of Base year Adjustment for the Financial Year 2022	102
Table D – Analysis of Budget Income 2022 from Goods and Services	103
Table E – Analysis of Budget Income 2022 from Grants and Subsidies	104
Appendix 1 – Summary of Central Management Charges for Year 2022	105
Appendix 2 – Summary of Local Property Tax Allocation for Year 2022	106
Certificate of Adoption	107

TABLE C - CALCULATION OF BASE YEAR ADJUSTMENT

	(i)	(ii)	(iii)	(iv)	(v)
Rating Authority	Annual Rate on Valuation 2022 €	Effective ARV (Net of BYA) 2022 €	Base Year Adjustment 2022 €	Net Effective Valuation €	Value of Base Year Adjustment €
<u>Meath County Council</u>	<u>0.1938</u>				
Meath County Council	0.1938	-	-	-	-
TOTAL				-	-

Table D

ANALYSIS OF BUDGET INCOME 2022 FROM GOODS AND SERVICES

Source of Income	2022 €	2021 €
Rents from Houses	12,876,293	11,950,537
Housing Loans Interest & Charges	1,501,648	1,300,277
Parking Fines & Charges	1,323,000	1,303,000
Irish Water	8,709,408	8,561,458
Planning Fees	1,064,000	839,000
Domestic Refuse Charges	-	-
Commercial Refuse Charges	-	-
Landfill Charges	-	-
Fire Charges	300,000	250,000
Recreation/Amenity/Culture	117,000	117,000
Agency Services & Repayable Works	-	-
Local Authority Contributions	3,866,653	2,841,900
Superannuation	1,666,997	1,582,004
NPPR	300,000	300,000
Other income	11,093,762	12,024,425
Total Goods & Services	42,818,761	41,069,601

Table E

ANALYSIS OF BUDGET INCOME 2022 FROM GRANTS & SUBSIDIES

	2022 €	2021 €
Department of Housing, Local Government and Heritage		
Housing and Building	27,251,481	26,639,168
Road Transport & Safety	-	-
Water Services	235,000	225,000
Development Management	1,121,029	1,239,224
Environmental Services	-	-
Recreation and Amenity	-	-
Agriculture, Education, Health & Welfare	8,000	10,000
Miscellaneous Services	4,308,359	3,463,825
Sub-total	32,923,869	31,577,217
Other Departments and Bodies		
TII Transport Infrastructure Ireland	22,663,385	21,380,924
Media, Tourism, Art, Culture, Sport & the Gaeltacht	-	-
National Transport Authority	-	-
Social Protection	-	-
Defence	164,000	164,000
Education	-	-
Library Council	-	-
Arts Council	85,000	55,000
Transport	-	-
Justice	-	-
Agriculture & Marine	-	-
Enterprise, Trade & Employment	1,268,730	1,268,730
Community, Rural Development & the Islands	-	-
Climate Action & Communications Networks	305,010	319,000
Food Safety Authority of Ireland	183,600	183,600
Other	396,000	405,945
Sub-total	25,065,725	23,777,199
Total Grants & Subsidies	57,989,594	55,354,416

APPENDIX 1

SUMMARY OF CENTRAL MANAGEMENT CHARGES FOR YEAR 2022

Description	2022 €	2021 €
Corporate Affairs Overhead	2,907,751	2,798,914
Corporate Buildings Overhead	3,208,874	3,558,943
Finance Function Overhead	1,104,410	1,118,109
Human Resource Function Overhead	2,305,563	2,213,439
IT Services	3,492,330	3,110,123
Print/Post Room Service Overhead Allocation	383,000	373,000
Pension & Lump Sum Overhead	6,441,745	5,393,879
Total Expenditure Allocated to Services	19,843,673	18,566,407

APPENDIX 2

SUMMARY OF LOCAL PROPERTY TAX ALLOCATION FOR YEAR 2022

Description	2022	2022
	€	€
Discretionary		
Discretionary Local Property Tax (Table A)	14,059,169	
		14,059,169
Self Funding - Revenue Budget		
Housing & Building	-	
Roads, Transport & Safety	-	
		-
Total Local Property Tax - Revenue Budget		14,059,169
Self Funding - Capital Budget		
Housing & Building	33,631	
Roads, Transport & Safety	-	
		33,631
Total Local Property Tax - Capital Budget		33,631
Total Local Property Tax Allocation (Post Variation)		14,092,800

CERTIFICATE OF ADOPTION

I hereby certify that at the budget meeting of Meath County Council held this 29th day of November 2021 the Council by Resolution adopted for the financial year ending on the 31st day of December 2022 the budget set out in Tables A -F and by Resolution determined in accordance with the said budget the Rates set out in Tables A and C to be the annual rate on valuation to be levied for that year for the purposes set out in those Tables.

Signed Sean Drury
Cathaoirleach

Countersigned Fiona Leary
Head of Finance

Dated this 29 day of November, 2021