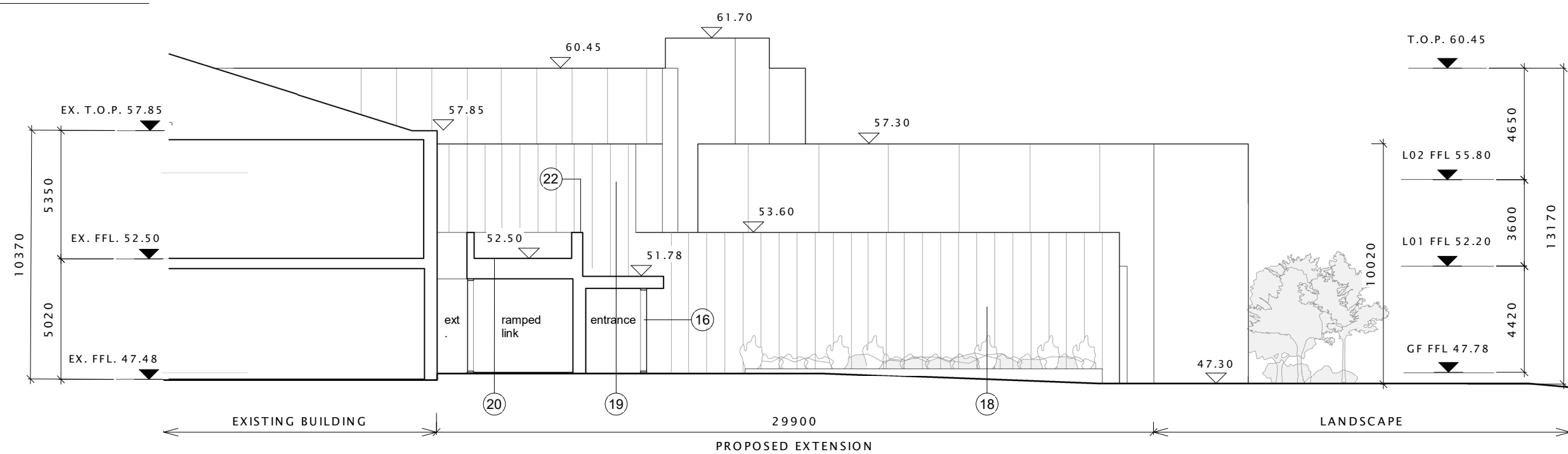


1 Proposed East Elevation  
1 : 200

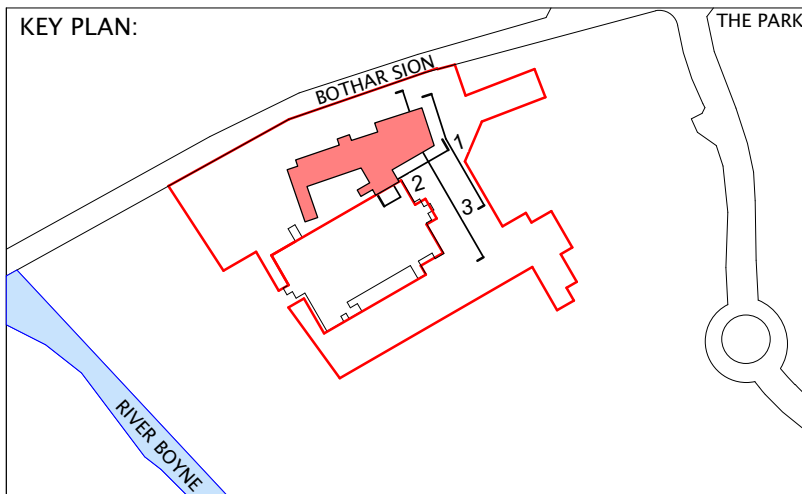


2 Proposed South Elevation at Entrance  
1 : 200



3 Proposed Front Entrance  
1 : 200

KEY PLAN:



LEGEND :

- A. New metal boundary fence on plinth
- 1. Double glazed unit with timber frame with natural anodised metal sill
- 2. Perforated natural anodised metal sheet to natural ventilation opening
- 3. Terracotta tiled inset panel – Colour 1
- 4. Terracotta tiled inset panel – Colour 2
- 5. Natural anodised metal coping at parapet level
- 6. Patterned relief concrete plinth
- 7. Ventilation opening integrated in concrete pattern relief
- 8. Ventilation opening integrated in terracotta tiled panel
- 9. Rainscreen cladding assembly with terracotta tile – Colour 3
- 10. Glazed assembly with back painted opaque glass to solar chimney
- 11. Glazed assembly to solar chimney
- 12. Solar chimney extract vent; glazed louvers
- 13. Double glazed timber frame sliding door unit
- 14. Single glazing to double glazed timber framed unit and ventilation opes, with interstitial blind in nat. anodised metal housing
- 15. Charred timber cladding
- 16. Standing seam metal clad portico with glazed sliding doors
- 17. External shading – wood fins in wood frame surround
- 18. Silicone jointed single glazing to double glazed timber framed assembly with interstitial fixed shading
- 19. Double glazed assembly on timber framing
- 20. Roof terrace with raised planters
- 21. Sedum green roof
- 22. Back painted glazed balustrade to roof terrace
- 23. Bridge Link - silicone glazed assembly with metal clad panels
- 24. Pvs integrated into green roof
- 25. Timber slatted surround to bike store
- 26. Painted metal external doors to match terracotta tiles
- 27. New double glazed door in existing curtain wall assembly. Colour to match existing.
- 28. Metal cladding
- 29. Double glazed rooflight with upstand
- 30. Flat roof
- 31. Timber slats on solid wall and door (where indicated)
- 32. Standing seam metal clad portico with glazed sliding doors
- 33. External shading – wood fins in wood frame surround
- 34. Silicone jointed single glazing to double glazed timber framed assembly with interstitial fixed shading
- 35. Double glazed assembly on timber framing

NOTES :

No dimensions on this drawing are to be scaled.  
All levels and dimensions on this drawing are to be checked on site. Any discrepancies on this drawing are to be reported to and verified with the architect. This drawing is to be read in conjunction with all other application documentation and information as issued.

This is not a construction drawing, it is unsuitable for the purpose of construction and must on no account be used as such.

This drawing is the copyright of Bucholz McEvoy Architects Ltd and may not be copied, altered, or reproduced in any form or passed to a third party without license or written consent.

## PLANNING

drawing PROPOSED G.A. ELEVATIONS / SECTIONS – SHEET 2

drawing no.	scale 1 : 200 @ A2	drawn MH	project no. 0314
0314 A4-02	date NOV 2022	checked KH	revision

project MEATH COUNTY COUNCIL CHAMBER & OFFICES

client MEATH COUNTY COUNCIL

**bucholzmcEvoy**ARCHITECTS

UNIT C MOUNTPLEASANT BUSINESS CENTRE UPPER MOUNTPLEASANT AVENUE DUBLIN 6 IRELAND  
T +353 1 496 6340 F +353 1 496 6341 INFO@BMCEA.COM WWW.BMCEA.COM