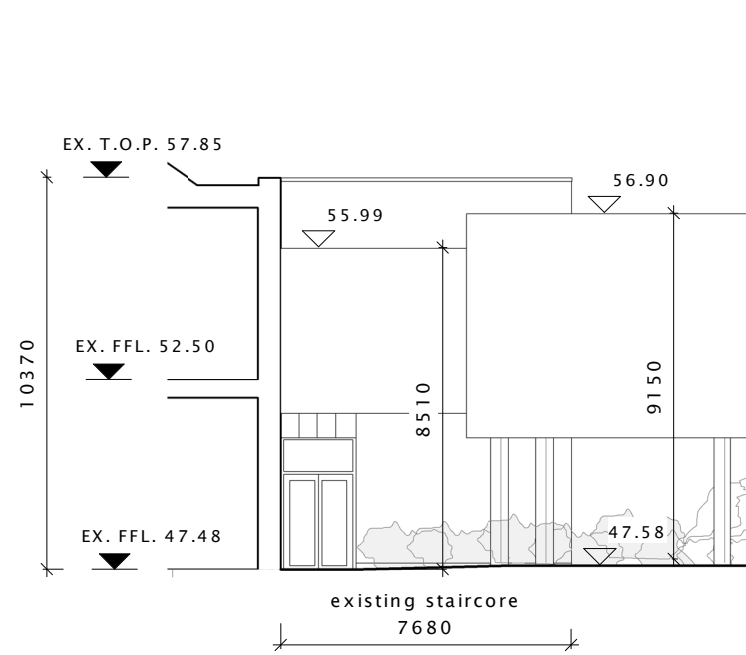


refer to A4-03/5 for proposed materials and true proposed extension elevation



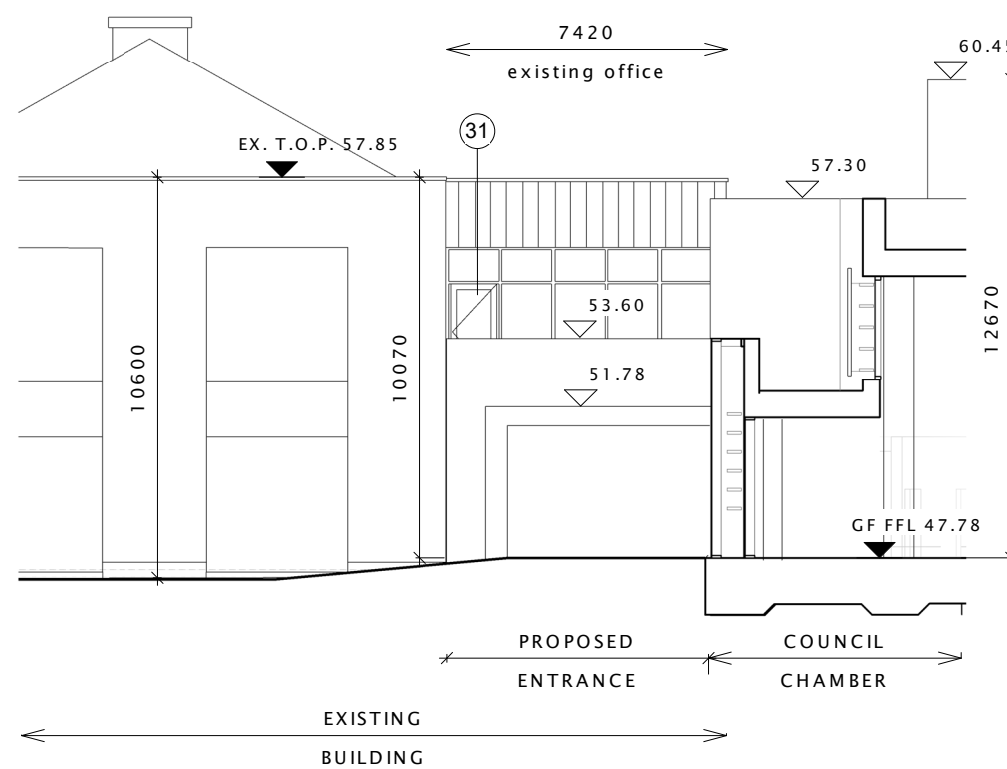
2 Proposed Link with Existing Staircore; East Elevation
1 : 200

refer to A4-03/1 for proposed materials and true proposed extension elevation

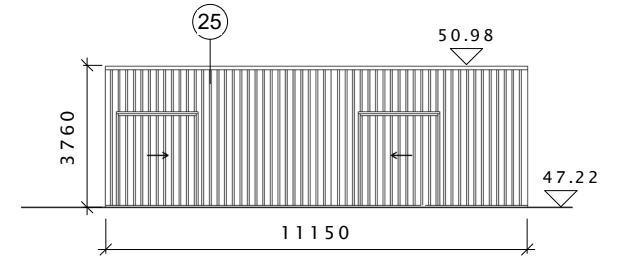


3 Proposed with Existing Staircore; West Elevation
1 : 200

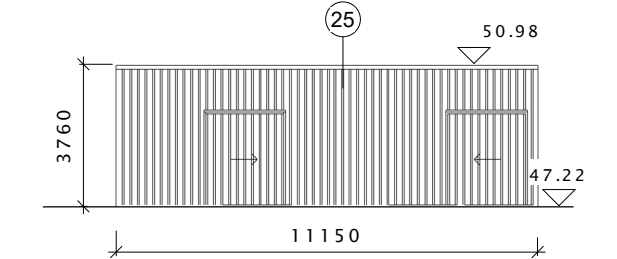
refer to A4-02/01 for proposed materials and true proposed elevation



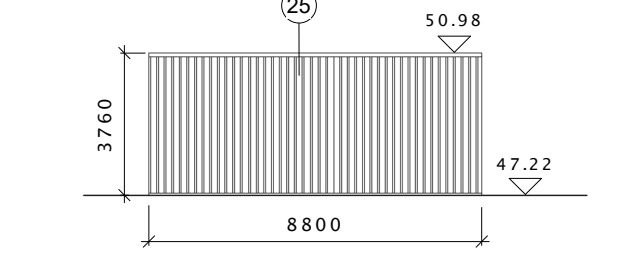
4 Existing Building; East Elevation
1 : 200



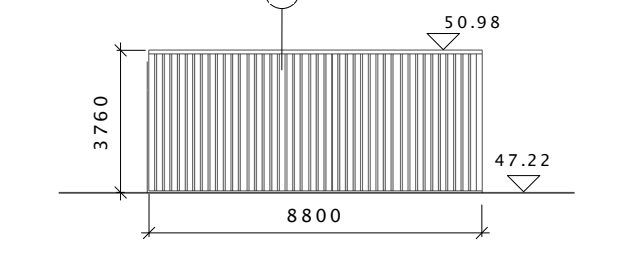
5 Proposed Bike Storage - North Elevation
1 : 200



6 Proposed Bike Storage - South Elevation
1 : 200



7 Proposed Bike Storage - East Elevation
1 : 200

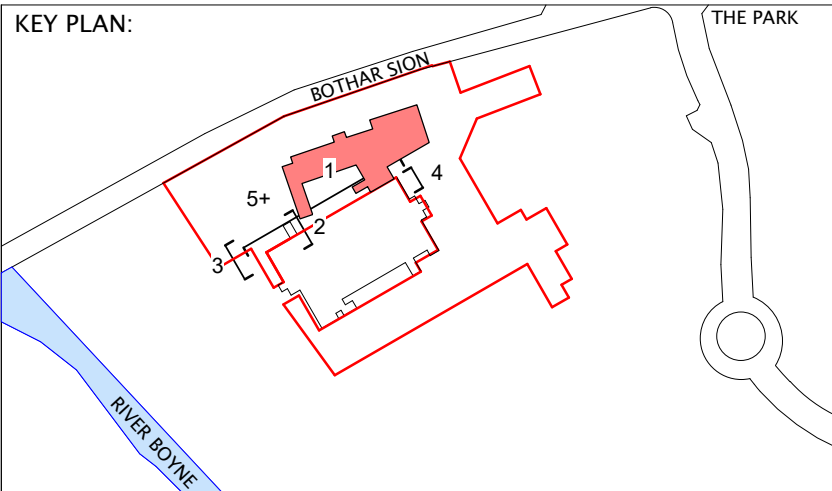


8 Proposed Bike Storage - West Elevation
1 : 200



1 Proposed Extension with Existing Building; East Elevation
1 : 200

KEY PLAN:



LEGEND :

- A. New metal boundary fence on plinth
1. Double glazed unit with timber frame with natural anodised metal sill
2. Perforated natural anodised metal sheet to natural ventilation opening
3. Terracotta tiled inset panel - Colour 1
4. Terracotta tiled inset panel - Colour 2
5. Natural anodised metal coping at parapet level
6. Patterned relief concrete plinth
7. Ventilation opening integrated in concrete pattern relief
8. Ventilation opening integrated in terracotta tiled panel
9. Rainscreen cladding assembly with terracotta tile - Colour 3
10. Glazed assembly with back painted opaque glass to solar chimney
11. Glazed assembly to solar chimney
12. Solar chimney extract vent; glazed louvres
13. Double glazed timber frame sliding door unit
14. Single glazing to double glazed timber framed unit and ventilation opes, with interstitial blind in nat. anodised metal housing
15. Charred timber cladding
16. Standing seam metal clad portico with glazed sliding doors
17. External shading - wood fins in wood frame surround
18. Silicone jointed single glazing to double glazed timber framed assembly with interstitial fixed shading
19. Double glazed assembly with timber framing
20. Roof terrace with raised planters
21. Sedum green roof
22. Back painted glazed balustrade to roof terrace
23. Bridge Link - silicone glazed assembly with metal clad panels
24. Pvs integrated into green roof
25. Timber slatted surround to bike store
26. Painted metal external doors to match terracotta tiles
27. Timber slatted soffit to bridge
28. External staircase
29. Timber frame double glazed door unit
30. Roof plant screening - timber slatted surround
31. New double glazed door in existing curtain wall assembly. Colour to match existing.
32. Metal cladding
33. Double glazed rooflight with upstand
34. Flat roof
35. Timber slats on solid wall and door (where indicated)

NOTES :

No dimensions on this drawing are to be scaled.
All levels and dimensions on this drawing are to be checked on site. Any discrepancies on this drawing are to be reported to and verified with the architect. This drawing is to be read in conjunction with all other application documentation and information as issued.

This is not a construction drawing, it is unsuitable for the purpose of construction and must on no account be used as such.

This drawing is the copyright of Bucholz McEvoy Architects Ltd and may not be copied, altered, or reproduced in any form or passed to a third party without license or written consent.

PLANNING

drawing PROPOSED G.A. ELEVATIONS / SECTIONS - SHEET 4

drawing no.	scale 1 : 200 @ A2	drawn MH	project no. 0314
0314 A4-04	date NOV 2022	checked DH	revision

project MEATH COUNTY COUNCIL CHAMBER & OFFICES

client MEATH COUNTY COUNCIL

bucholzmcEvoyARCHITECTS

UNIT C MOUNTPLEASANT BUSINESS CENTRE UPPER MOUNTPLEASANT AVENUE DUBLIN 6 IRELAND
T +353 1 496 6340 F +353 1 496 6341 INFO@BMCEA.COM WWW.BMCEA.COM