



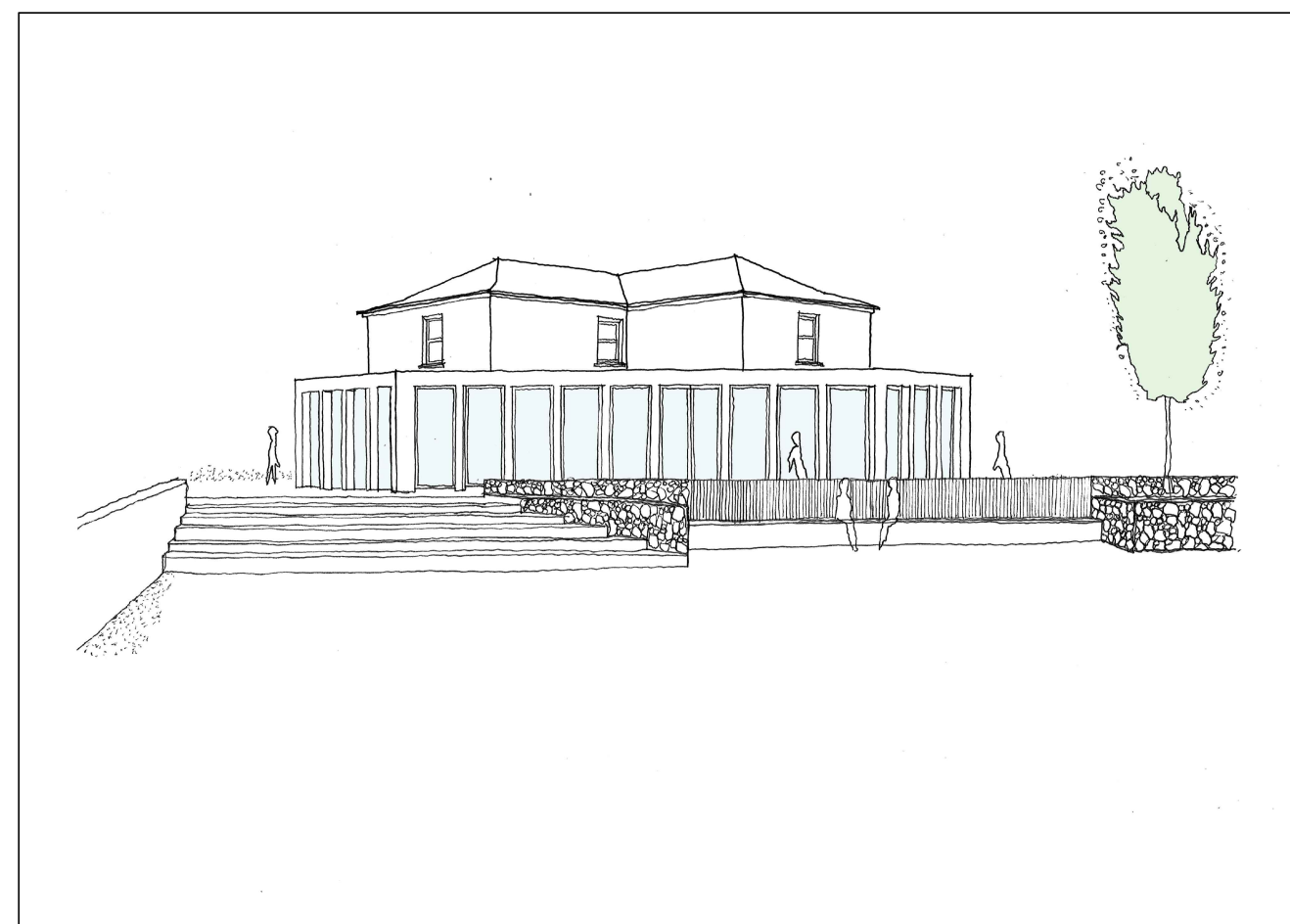
A Visualisation Representing the View from Athlumney Road Looking South East Along the Planning Approved Cycle Route & Into Andy Brennan Park



D Visualisation Representing a Birds Eye View Above the Canal Basin Looking South West over the Proposed Spicer's Bakery Plaza and Cafe



B Visualisation Representing the View Looking South West Towards The Proposed Steps at Somerville Bridge



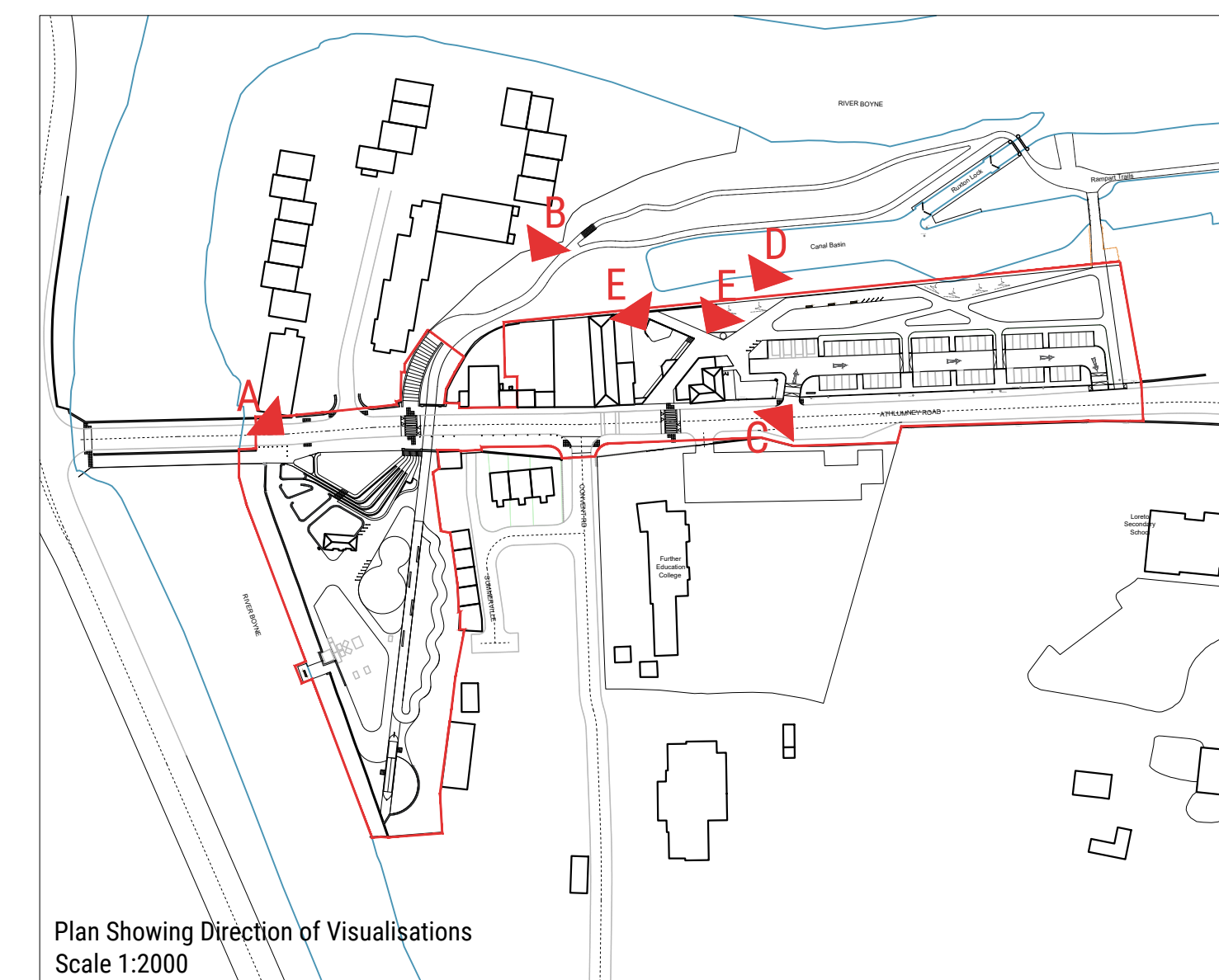
E Visualisation Representing the View from the Bandstand Looking South East Towards The Proposed Cafe with Extension



F Visualisation Representing the View Looking South West Towards the Proposed Cafe and Plaza at Spicer's Bakery



C Visualisation Representing the View from Athlumney Road Looking North East Into The Proposed Extended Car Park Leading to The Ramparts



Plan Showing Direction of Visualisations
Scale 1:2000

notes
Do not scale from drawing, use figured dimensions only.
All dimensions are to be checked on site by contractor prior to commencement of all work.
Discrepancies should be reported immediately.
This drawing is to be read in conjunction with all other TPHC drawings and specification.
This drawing is the copyright of the Landscape Architect and must not be reproduced or used without permission.
Ordnance information base information shown is reproduced from Ordnance Survey material © Crown copyright 2018 Licence Number 100034836.

revision	description	date	author
P01	For Planning	15/12/2022	SM

the paul hogarth company

LANDSCAPE ARCHITECTURE / URBAN DESIGN / PLANNING

e: edinburgh@paulhogarth.com e: belfast@paulhogarth.com e: dublin@paulhogarth.com
t: +44 (0)131 331 4811 t: +44 (0)28 9073 6690 t: +44 (0)1 897 0372

visit us at www.paulhogarth.com / find us on: facebook / twitter / instagram / linkedin

created | 31/08/2022 | drawn | SM | checked | JH | scale @ A1 | 1:100
project number | 1520 | drawing number | 301 | revision | P01

client | **Meath County Council**

project | Spicer's Bakery, Ramparts Car Park & Andy Brennan Park Project

drawing | **Landscape Visualisations**

status | **PLANNING**